



IN THIS ISSUE



Board of Directors	Page 2
President's Report	Page 3
VP Technical Report	Page 5
Tech Corner	Page 8
VP Legislative Report	Page 11
Education Chair Report	Page 15

MEETING FORMAT

6:00 – 6:30	Social
6:30 – 6:45	Announcements & Table Tops
6:45	Dinner Served
7:00 – 8:00	Presentation

DATE:	April 24, 2024
TIME:	6:00pm to 8:00pm
PLACE:	Olive Grove Restaurant
TOPIC	Siphonic Roof Drains
SPEAKER:	Jay Stenklyft


[Register Today](#)



Olive Grove
Restaurant & Lounge

705 N. HAMMONDS FERRY ROAD, LINTHICUM, MD 21090
PHONE: 410-636-1385



 Local Chapters are not authorized to speak for the Society.
Newsletter questions? Please contact [Nikita Patel](#)

ASPE Baltimore Board of Directors



President

Charles J. Swope, PE, CPD, LEED AP B+C
Mueller Associates
president@baltimoreaspe.com



Vice President- Technical

Julian Chival, LEED AP BD+C
Julian.Chival@gmail.com



Vice President- Legislative

Christopher Imhof, PE, CPD
WSSC
Christopher.Imhof@wsscwater.com



VP- Affiliate, Scholarship & Historian

Jason J. Eagles
Bay Associates Group
Jason@bayassociates.com



Treasurer

Kathleen Dwyer-Stephens
EJ Dwyer Company, Inc.
KDwyer@ejdwyer.com



Vice President- Membership

Brian Crisp, CPD
Johnson, Mirmiran & Thompson
BCrisp@jmt.com



Education Chair

Nikita Patel, PE
Sherman Engineering Company
npatel@shermanengineering.com



Women of ASPE- Liaison

Karen Schulte, PE, CPD
Mueller Associates
KSchulte@muellerassoc.com



ASPE Young Professionals - Liaison

Nicole Murphy
Harry Eklof
nmurphy@harryeklof.com



Administrative Secretary

Jay Otto
Otto Sales
JayOtto@ottosales.com



Corresponding Secretary

Matt Obenchain, PE
Min Engineering, Inc.
Matt.Obenchain@minengineering.com

Newsletter Advertising

- As a paid advertiser, you will have your advertisement in the newsletter for one full year (9 editions) and company logo displayed on the Chapter website.
- Ads for the year will begin in the September issue and run through the May issue.
- All ads must be paid in full prior to the advertisement being included in the newsletter.
- Advertiser must provide ads in high resolution PDF format. Logo must be provided in .jpeg format, 200px wide size
- Cost per advertisement is as follows:
 - Full Page \$ 750.00
 - Half Page \$ 500.00
- Please contact Nikita Patel or Chuck Swope
- Make checks payable to Baltimore Chapter of ASPE. Please contact the Chapter Treasurer with any questions.



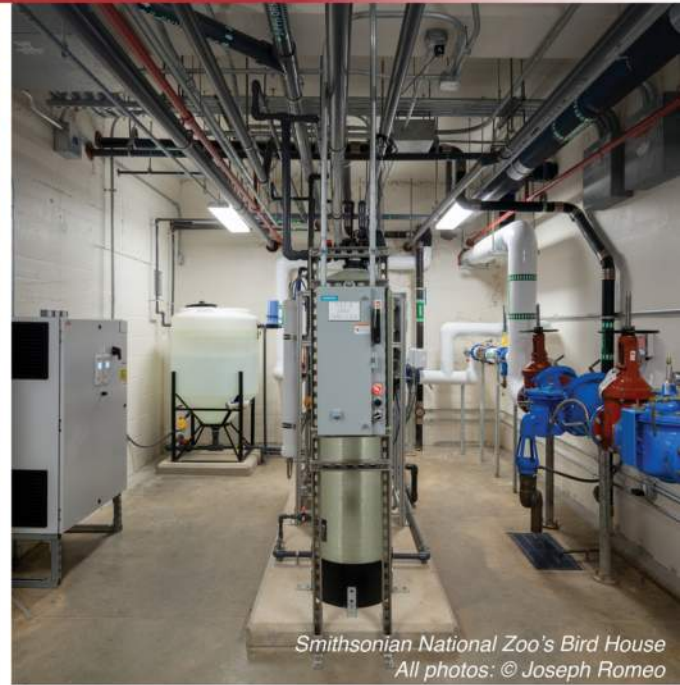
Chuck Swope, PE, CPD, LEED AP BD+C
Chapter President

Greetings fellow eclipse watchers! I hope that you saved your glasses from last time and didn't have to re-order them this year like I did. Good news is that that wasn't the only exciting thing happening this month. I admit that it is hard to top an astronomical phenomena that inspires everything from epiphanies and prophecies, to a Blackout Slushie at Sonic. Huh. Well I guess that's a thing too. Anyway, I'm looking forward to hearing about the Annual WOA Event on April 18! This time, Karen has selected McFadden's Art Studio for a glass blowing event where the ladies can keep it glassy. (My jokes will never get better, sorry) Of course, we will also have having our Annual Golf Outing and Cookout on April 26th. Last year was my first time golfing in 20 years, so naturally it rained. I had a great time despite the weather and toughed it out through all 18 holes, mostly because no one told me that it was OK to quit. So, this year I planned ahead and asked for sunshine and mild temperatures. We'll see how that goes.

Speaking of timely events, Julian and I had the great fortune to addend the Annual Virginia Plumbing and Mechanical Inspectors Association 2024 Spring School of Instruction. This was three day event intended for designers and inspectors alike where we learned about Gas Regulator selection and installations, Fire rated penetrations, and ADA compliance. The best part of the conference was the connections made. I had a brief discussion with the former and future VPMIA presidents where I hope that we can entertain future programs. After the conference we held a planned/impromptu Mid-Atlantic ASPE conference. During this last meeting, board members from the Baltimore, DC, Richmond, and Blue Ridge chapters met to discuss the similarities between our chapters. The VA,DC,MD markets are unique within Region 1, as we share similar challenges. During our conference, we discussed things like meeting topics, member retention, improving attendance, and other ideas that we can incorporate into all of our chapters. I'm grateful for the opportunity that this meeting offered and look forward to incubating them into future programs!

Finally, as you may have heard from our ASPE Society announcements, the Professional Engineer Working Group has announced the results of their effort with the National Council of Examiners for Engineering and Surveying (NCEES). They have approved the "Mechanical Plumbing" specification for the plumbing exam. This means that there could be plumbing questions added to the mechanical engineering modules with a future Plumbing/Piping Exam Module on the horizon. If you are interested in participating in the development of these questions, please contact David Dexter, plbgegr@gmail.com, to let him know. Drop me a line too, I'd love to know who is participating from our chapter!

SUPPORT FOR ASPE BALTIMORE



Smithsonian National Zoo's Bird House
All photos: © Joseph Romeo



Dedicated to advancing plumbing engineering excellence, fostering health, environmental sustainability, and economic prosperity



Mueller

Mueller Associates
1306 Concourse Drive, Suite 100
Linthicum, MD 21090
www.muellerassoc.com
410.646.4500

ENGINEERING GREAT EXPERIENCES



Julian Chiveral, LEED AP BD+C
Vice President- Technical

Greetings ASPE Members and Soon-to-be Members,

As we tiptoe into April, I find myself eagerly anticipating the burst of springtime blooms, the warming embrace of the sun, and the start of another Orioles season that will (surely?) end in a World Series win this time. I don't know anything about baseball, so I figure I might as well aim high.

I'd like to take a moment to extend my gratitude to everyone who attended our March meeting. Sam Schwander put on an enlightening presentation about pre-action sprinkler systems that flooded the room with knowledge (not unlike a deluge system) and fielded some great questions from those in attendance. Sam can be reached at SSchwander@ReliableSprinkler.com if you have any other sprinkler questions.

Now, for April's meeting, I'll give you a hint at the topic, Jeopardy-style: April Showers bring these.

If you said, "What is an in-depth discussion of roof drainage systems?", you win! That is the only correct answer. I'm thrilled to announce that our guest speaker will be none other than Jay Stenklyft, a seasoned veteran with over two decades of experience in the realm of siphonic roof drainage. Jay currently serves as the chair of the ASPE/ANSI 45 Siphonic Roof Drainage Working Group; it would be an understatement to say this guy knows his stuff. His presentation promises to shed light on the intricacies of siphonic roof drain systems, explore how and when to consider a siphonic system, and what standards to reference when implementing them on your next project!

So, mark your calendars! April 24th is the date, and siphonic roof drainage is the topic. I look forward to seeing everyone at the Olive Grove as we come together once again to learn, connect, and grow as members of the esteemed American Society of Plumbing Engineers.

Best,
Julian Chiveral
Vice President- Technical

ASPE
BALTIMORE
CHAPTER

GOLF OUTING & COOKOUT



26 APRIL
2024

TIMBERS AT TROY
Columbia, MD
\$125 / Golfer

WIN PRIZES FOR: Team Play, Longest Drive, Door Prizes, and Closest to Pin

AGENDA

7:30 AM	Golf Registration & Lite Breakfast
8:30 AM	Shotgun Start/Scramble Format/"Captain's Choice", Mulligans Available
1:30 PM	Cookout (Hamburgers, hot dogs, etc.)
2:00 PM	Awards & Prizes

SPONSORSHIPS

\$ 125	Tee Marker (with Foursome)
\$ 150	Tee Marker (without Foursome)
\$ 600	Drink Cart Sponsorship*
\$ 600	Cookout Sponsorship**
\$ 600	Golf Cart Sponsorship***

* Includes tee marker and drink cart sign

** Includes tee marker and cookout sign

*** Includes tee marker and cart signs for each cart

SPONSORS/PARTICIPANTS

Please email slips to:
David K. Goodell
DGoodell@jamesposey.com

OR

Please mail slips to:
James Posey Associates
Attn: David K. Goodell
11155 Red Run Blvd, Suite 310
Baltimore, MD 21117

FOR CREDIT CARD PAYMENTS:
Please visit our [website](#) to complete
registration and pay via credit card

ASPE BALTIMORE GOLF TOURNAMENT

Please return completed forms by April 10, 2024

Name

Company

Phone

Address

Email

PLAYER #1

PLAYER #2

PLAYER #3

PLAYER #4

TEE MARKER (w/ Foursome)
(\$125)

TEE MARKER (w/o Foursome)
(\$150)

DRINK CART
(\$600)

COOKOUT
(\$600)

GOLF CART
(\$600)

\$ _____ + \$ _____ = \$ _____
Total for Golfers Total for Sponsorship Total Amount

NAME ON TEE MARKER*:

*Please email logos to [Dave Goodell](mailto:dave.goodell@aspe.org)

MAKE CHECKS PAYABLE TO ASPE BALTIMORE CHAPTER OR PAY ONLINE

Reservations will be confirmed when check and participant information is received.



For more information, contact: [David Goodell](mailto:dave.goodell@aspe.org)

Water Sustainability: Save Water, Live Better

As we strive to conserve water resources, we contribute to the current population's well-being and pave the way for a more sustainable future.

March 4, 2024

Water sustainability's significance is growing due to increasing water scarcity and environmental concerns. Various methods toward water sustainability include focusing on best practices, building codes and certifications such as Leadership in Energy and Environmental Design (LEED).

This discussion delves into the role of low-flow fixtures, the importance of hot water system design and leak detection, and the potential benefits of greywater and rainwater systems in achieving water conservation. By understanding and implementing these strategies, we can address the immediate need for water conservation and contribute to energy efficiency and the well-being of ecosystems.

Low-Flow Fixtures: A Simple Yet Effective Solution

One of the fundamental approaches to water sustainability involves using low-flow fixtures. These fixtures limit water flow through plumbing systems, thereby reducing overall water consumption. Certifications such as LEED and Green Globes emphasize the importance of incorporating these fixtures in building design and construction by giving more points for certification due to the flow differential.

For instance, the California Plumbing Code has taken a proactive stance by mandating low-flow fixtures and setting a maximum gallon per flush (gpf) at 1.28 gpf instead of the International Plumbing Code standard of 1.6 gpf.

While low-flow fixtures represent a step toward water conservation, their effectiveness is intertwined with the plumbing system design. Design considerations, such as the arrangement of plumbing systems and the integration of low-flow fixtures into the overall design, play a pivotal role in maximizing the impact of water-saving technologies.

Plumbing Design: Important to Conserve Water

Another factor in water conservation — and often an overlooked one — is the design of the hot water system in residential and commercial buildings. For homes, the typical hot water design does not include a recirculation loop. This is essential to maintaining hot water temperature. In some cases, the hot water piping can be installed below grade. In colder climates, the temperature drop in hot water piping can be significant when fixtures are not in use.

Having no recirculation loop in residential applications leads users to run water at fixtures for extended periods to flush out stagnant, tepid water. This results in a significant amount of unnecessary water waste.

Commercial buildings, on the other hand, typically incorporate recirculation loops in their hot water systems. This design choice minimizes the occurrence of water stagnation in pipes, reducing the need for flushing and, fortunately, conserving water.

Attention to detail in hot water system design, including minimizing uncirculated hot water piping, is crucial for optimizing water usage efficiency in commercial applications. Codes have also started to recognize the importance of minimizing dead legs and that hot water routing and design play key roles in energy efficiency and water conservation.

The International Energy Conservation Code is one of them. It requires the plumbing design to follow requirements restricting the length of the hot water dead-leg to a fixture that limits the volume of stagnant water in the system. By enforcing this restriction, the energy savings and efficiency come from the water heater needing to heat a smaller system volume to satisfy needs. By allowing a smaller system volume in the design, less water is used, leading to water conservation.

Water Sustainability: Save Water, Live Better

Another plumbing design aspect that can be crucial for water conservation, especially in larger facilities, is leak detection technologies. If leaks within the facility go undiscovered, the effects can lead to substantial water waste and even bigger issues, such as damage to the building structure. When applicable, integrating leak detection systems into the plumbing design can establish a proactive approach to water conservation and even building maintenance because leaks within the piping can be caught early on.

Greywater Systems: Harnessing Clean Wastewater

An up-and-coming aid to water conservation is greywater usage. Greywater is defined as clean wastewater from sources such as lavatory sinks and showers; it presents a unique opportunity for water conservation. This type of water can be captured and repurposed for nonpotable uses, such as flushing toilets and irrigation. Greywater systems play a crucial role in minimizing reliance on the domestic cold water supply for items that do not necessarily require potable water.

Implementation of greywater systems involves careful planning and integration into building designs and collaboration early on to ensure its compatibility for the project, especially when it comes to cost. The capture and use of greywater can significantly reduce the demand for freshwater resources, contributing to overall water sustainability goals.

Figure 1 illustrates a sample snapshot of a greywater piping system and its componentry, showcasing all the parts and pieces of this water-saving strategy.

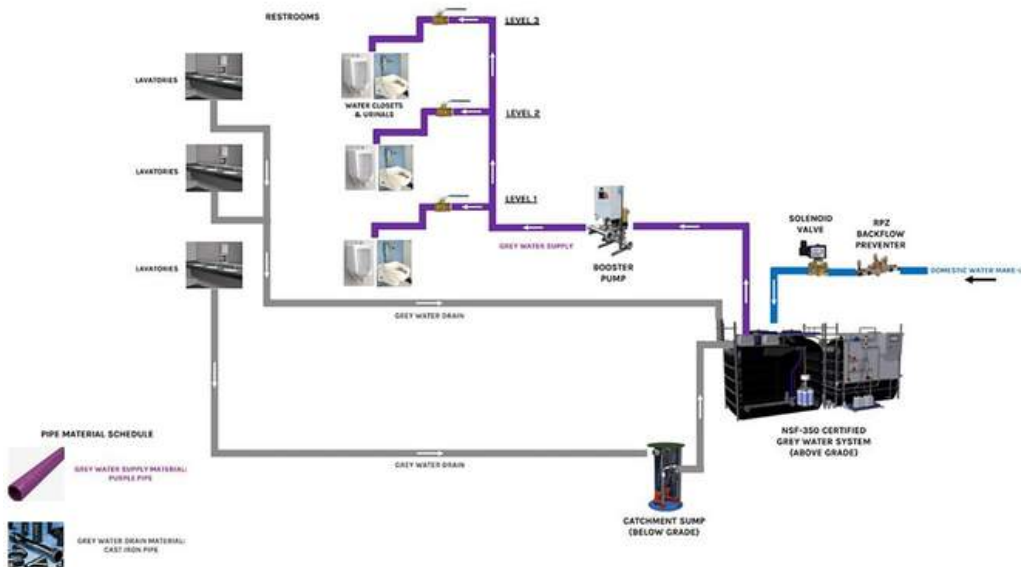


Figure 1

Rainwater Harvesting: Effect on Landscape Architecture

Rainwater harvesting stands as a transformative practice with profound implications for sustainable water management and landscape architecture. This approach aids in reducing potable water use for irrigation by capturing and using roof rainwater runoff in lieu of potable water. Much like greywater systems, rainwater harvesting represents a strategic endeavor to repurpose a valuable resource that would otherwise be underused.

Various methods are available to provide water for irrigation, including planting low-water and regionally adaptive plant material, placing plants by similar water needs, implementing drip irrigation with flow sensor technology, and using rainwater for irrigation before it is directed back to the local stormwater system.

Water Sustainability: Save Water, Live Better

Rainwater harvesting involves installing systems that collect rainwater as it flows off rooftops. This harvested rainwater is then stored in tanks or cisterns, ready to be used for landscape purposes. Figure 2 depicts the rainwater harvesting cisterns at Austin Community College San Gabriel Campus Center. The cisterns are beautifully designed as part of the architectural language, becoming a focal feature of the outdoor student seating area while providing awareness of sustainable practices.

If storing rainwater is not an option, rainwater can still passively aid in landscape irrigation. Rainwater from building roofs and site hardscapes can be diverted to the landscape by using bioswales, site grading design and other green infrastructure methods. This helps reduce potable water use and filtrate runoff before entering the stormwater system.

Integrating rainwater harvesting systems requires early coordination with the design team and the project client to evaluate design implementation, cost and ongoing maintenance requirements to create different solutions that best fit the client, architectural aesthetic and regional area.

The Tolleson Civic Center in Tolleson, Ariz., exemplifies the successful integration of water sustainability and aesthetics through interdisciplinary collaboration. In this instance, the collaboration between plumbing, architectural, landscape and structural disciplines played a pivotal role in incorporating water-conscious design principles while enhancing the facility's visual appeal.

The coordination efforts focused on managing storm drainage from the roof, necessitating a joint approach to channel a portion of the building's runoff into a dedicated drain column.

Within this collaborative framework, the rainwater captured in the drain column is guided into a roof drain rain basin meticulously designed by landscape architects. This basin not only serves a functional purpose but also contributes to the overall aesthetic harmony of the civic center. To ensure the quality of the captured rainwater, a drain at the basin's bottom filters out impurities before the water is directed to a retention tank, a crucial element in the water management strategy.

Civil engineers played a key role in this stage, contributing their expertise to optimize the flow and storage of rainwater. Figure 3 illustrates the column to the right of the lobby entrance and how well it blended in with the other structural columns for the building. The synergy between diverse disciplines and their thoughtful integration into the design process resulted in a well-conceived facility that goes beyond mere functionality.

Being wasteful is something people don't like to live with, so why can't we live better by starting to apply ways to be sustainable with our water supply and usage? Methods and systems such as providing low-flow fixtures, hot water system design, leak detection, and greywater and rainwater systems each play a vital role in mitigating water wastage and promoting responsible water use. Collaborative efforts between designers, clients and policymakers are essential to ensure the effective implementation of these strategies.

As we strive to save water, we contribute to the current population's well-being and pave the way for a more sustainable future. By integrating water-saving technologies into our built environment and adopting best practices, we can create a positive impact on energy efficiency, ecosystem health and overall water management. Water sustainability is not a trend but a necessity for a better world.

Lhymwell Manalo is a plumbing engineer at SmithGroup's Phoenix office. He is a member of the American Society of Plumbing Engineers and has seven years of experience designing plumbing systems for various building types.

Cristal Castro is a landscape designer at SmithGroup's Phoenix office. She has seven years of experience designing in the desert and enjoys collaborating to find creative design solutions for regional issues.



Chris Imhof, PE, CPD
Vice President- Legislative

2024 Maryland Legislative Session

The 2024 Maryland Legislative session began on January 10th.

The following is a list of proposed legislation relating to plumbing, building construction, climate action, trades, and licensing.

SB0096/HB0024

Environment – Impact of Environmental Permits and State Agency Actions

Altering the State's goals for reducing energy consumption in State buildings; requiring the Maryland Green Building Council to update the High Performance Green Building Program to ensure that the Program aligns with certain greenhouse gas emissions reduction goals; requiring the Department of General Services to identify State-owned facilities that are potential candidates for energy performance contracts; etc.

SB0258/HB0130

Department of General Services – State Buildings and Facilities – Energy Conservation and Greenhouse Gas Emissions Reductions

Altering the State's goals for reducing energy consumption in State buildings; requiring the Maryland Green Building Council to update the High Performance Green Building Program to ensure that the Program aligns with certain greenhouse gas emissions reduction goals; requiring the Department of General Services to identify State-owned facilities that are potential candidates for energy performance contracts; etc.

HB0210

Maryland Building Performance Standards – Fossil Fuel Use and Electric – Ready Standards

Requiring the Maryland Department of Labor to adopt, on or before January 1, 2025, and as part of the Maryland Building Performance Standards, a requirement that new buildings meet all energy demands of the building without the use of fossil fuels and an electric-ready standard for certain buildings.

HB0244

Maryland Occupational Safety and Health Act – Civil Penalties – Alterations

Altering certain civil penalties for violations of the Maryland Occupational Safety and Health Act; and requiring the Commissioner of Labor and Industry to annually increase the maximum and minimum civil penalties in a certain manner.

HB0245**Department of the Environment – Fees, Penalties, Funding, and Regulation**

Authorizing the Department of the Environment to charge a fee for processing and issuing on-site sewage disposal permits and individual well construction permits under certain circumstances; authorizing the Department to establish a certain fee for the Responsible Personnel Training Program Certification; requiring a holder of a license to transfer oil into the State to pay a certain fee when oil owned by the licensee is first transferred into the State; establishing the Private Dam Repair Fund as a special, nonlapsing fund; etc.

SB0586/HB0503**Public Safety – Corrugated Stainless Steel Tubing for Fuel Gas Piping Systems – Requirements and Prohibitions**

Prohibiting the sale, offer for sale, transfer, or distribution of corrugated stainless steel tubing that does not meet a certain International Code Council standard; requiring certain tubing used in the construction of fuel gas piping systems in certain buildings to meet a certain standard; and providing a civil penalties of up to \$1,000 for a violation of the Act.

SB0689/HB0823**Fire Protection and Prevention – Residential Rental Property – Requirements (Melanie Nicholle Diaz Fire Safety Act)**

Establishing certain requirements relating to the installation of certain fire safety equipment in residential rental high-rise buildings and certain other property; authorizing the Mayor and City Council of Baltimore City or the governing body of a county or municipal corporation to grant, by law, a certain property tax credit; establishing the Workgroup to Develop Fire Safety Best Practices for Pre-1974 High-Rise Buildings; requiring the Workgroup to report its findings and recommendations on or before December 31, 2024; etc.

HB0841**Environment – Plastic Bottle Waste Reduction – Water Bottle Filling Stations and Reporting**

Requiring that a water bottle filling station be installed in certain new construction beginning October 1, 2024; requiring the Department of the Environment to conduct a certain survey, gather certain data, and identify alternative methods for providing drinking water on or before October 1, 2025; and requiring the Department, on or before December 1, 2025, to submit the survey and alternative methods to the Governor and General Assembly.

SB1033/HB0926**Maryland Building Performance Standards – Local Requests for Guidance – Religious Considerations**

Requiring the Maryland Department of Labor, on request of a local jurisdiction and in consultation with the Office of the Attorney General, to provide guidance for the implementation and enforcement of the Maryland Building Performance Standards in relation to any religious observance, practice, or belief

SB0835/HB0992**Environment – Delegated Authorities – Well and Septic Program Permits**

Requiring a local health department or county government to which the Department of the Environment has delegated authority to administer a septic and well program to submit, on or before December 1, 2024, a schedule of review times for well and septic program permits to the Department for approval; and requiring certain entities to submit well and septic program permit data to the Department for review beginning 3 months after the original schedule submission is approved by the Department and every 3 months thereafter.

HB1024**Washington Suburban Sanitary Commission – Connection Pipe Emergency Replacement Loan Program – Expansion PG/MC 101-24**

Expanding the Connection Pipe Emergency Replacement Loan Program to include certain sewer pipes and diagnostic actions; altering the maximum amount of a loan that may be made under the Program from \$5,000 to \$10,000; altering the total amount of loans that the Program may provide or have outstanding from \$1,000,000 to \$2,000,000; and increasing to \$200,000 the amount of funding through fiscal year 2034 which the Washington Suburban Sanitary Commission must include for the Program in the Commission's budget.

SB056/HB1135**Environment – Water Pollution Control – Protecting State Waters From PFAS Pollution (Protecting State Waters From PFAS Pollution Act)**

Environment – Water Pollution Control – Protecting State Waters From PFAS Pollution (Protecting State Waters From PFAS Pollution Act)

HB1241**Environment – Polyvinyl Chloride and Chlorinated Polyvinyl Water Piping – Prohibition (WITHDRAWN BY SPONSOR)**

Prohibiting a person from using certain polyvinyl chloride or chlorinated polyvinyl chloride piping in the installation, repair, or replacement of a water pipe or plumbing intended to dispense water for human consumption beginning January 1, 2025; and establishing the Water Pipe Safety Workgroup.

SB1023/HB1279**Maryland Building Performance Standards – Fossil Fuel Use, Energy Conservation, and Electric– and Solar–Ready Standards (Better Buildings Act of 2024)**

Requiring the Maryland Department of Labor to adopt, on or before certain dates and as part of the Maryland Building Performance Standards, a requirement that new buildings meet all water and space heating demands of the building without the use of fossil fuels, energy conservation requirements, and an electric– and solar–ready standard for certain buildings; etc.

All proposed legislation can be found [here](#).

Chris Imhof, PE, CPD
Vice President – Legislative



E.J. Dwyer Company

10910 Pump House RD
Annapolis Junction, MD 20701

+ years of professional service!

Proudly representing quality BAA compliant products:

AGS

americangassafety.com

Laboratory, Kitchen, CO2, Gas detector UL approved valves & enclosures. Emergency off button w/valve. Complete utility control for water. Merlin digital controller. **In Stock!**

Aquarius Showers

aquariusproducts.com

Residential & commercial. Acrylic & gel-coat ADA compliant showers. Barrier free shower pans + tube replacement pans. **In Stock!**

Bradley Corporation

bradleycorp.com

Washfountains, lavatory centers, Halo emergency fixtures, repair parts. Natural quartz Evero, Verge, Advocate, Omni Deck, Washbar. Washrooms accessories. **In Stock!**

Chicago Faucet Company

chicagofaucets.com

Quality faucets for commercial applications, now offering sensor faucets. Meet the no-lead laws with our E-cast products. Food service for your entire kitchen, restaurant needs. Full lines of back mount, deck mount styles with pre-rinse, glass & pot fillers, faucets built to last! **In Stock!**

Chronomite Heaters

chronomite.com

Electric instantaneous hot water heaters from 0.2gpm to high capacity. Instant-micro & insta-temp digital mixers for multiple applications. Including **Omni** laminar flow controls. **In Stock!**

Circuit Solver

circuitsolver.com

Thermostatic balancing valve, automatically & continuously maintains recirc temperature. Manufactured by **ThermOmegaTech**, inline valve eliminates time consuming balancing procedures.

Comfort Designs

comfortdesignsbathware.com

ADA compliant, tile finish & tub replacement fixtures. Shower pans, ADA units, multi-piece with solid surface finish. Asura trench drain. New integral trench drain w/zero threshold shower systems. **In Stock!**

Filtrine Drinking Fountains

Filtrine.com

Drinking water products with a tradition of superior quality craftsmanship. Bottle filling stations, chillers, UV purifiers. Taste master carbon filters with stainless steel housing.

Keltech Tankless Heaters

keltech-inc.com

Commercial, industrial, & emergency applications. Precisely engineered, for quality tankless performance to suite your needs. 5kW to 144kW, ASME.

ThermOmegaTech

thermomegatech.com

Drain tempering valve - DTV - to add cold water to drain lines for codes. The STV - steam wash down station high temp mixing w/hose & wash down gun. Scald guard & freeze protection valves for emergency fixtures.



Contact Us:

www.ejdwyer.com

Phone: 240-553-0112

Fax: 888-811-4830

customerservice@ejdwyer.com

Kathy Dwyer - kdwyer@ejdwyer.com - 443-250-0285





Nikita Patel, PE
Education Chair

We are already in the planning stage for our annual Joint UA/ASPE Event, and I am happy to announce the date of our event has been confirmed for Wednesday, May 15, 2024. Just like previous years, we will continue to hold hands on activities with cast iron and copper pipe, but we also plan to add a track for returning members to enjoy in the form of a mini product show! Visit our website today to book your spot and network with peers.

The ASPE Convention is coming to Columbus, OH! This year, attendees will get to enjoy all the city has to offer AND MORE! The trade show/expo floor will be hopping as usual, and there will be over 20 classes offered for credit. The ASPE Education Committee is hard at work selecting the best topics and speakers for your enjoyment and education.

Nikita Patel, PE
Education Chair
AYP Liaison to the Board
npatel@shermanengineering.com

ARE YOU RESPONSIBLE FOR DESIGNING COMPRESSED GAS AND VACUUM SYSTEMS?



SINCE 1920, SHERMAN ENGINEERING

has been offering the optimum engineered vacuum and compressed gas systems in the Healthcare, Pharmaceutical, Chemical, Power, and General Industrial markets.

OFFERING 24/7 EMERGENCY SERVICE

our factory trained and ASSE 6000 credentialed service technicians are available to manage preventative maintenance and emergency outages.



QUESTIONS? CONTACT US

(215) 340-5300

www.shermanengineering.com

1830 County Line Rd, Unit 303

Huntingdon Valley, PA 19006

01

Vacuum Pumps

Liquid Ring, Dry Rotary Vane, Dry Rotary Claw, Lubricated Rotary Screw, Lubricated Rotary Claw, Lubricated Rotary Vane, Ejectors

02

Compressors

Oil Less Scroll, Oil Free Rotary Screw, Oil Free Rotary Claw, Oil Flooded Rotary Screw, Oil Flooded Reciprocating, Dryers, Drains, Purifiers, Filtration, Lubricants

03

Medical Gases

ASSE 6060 Design Support, Medical Vacuum, Medical Air, Compressed Gas Manifolds, Medical Gas Outlets, Ceiling Columns, Pedestals, Alarm Panels, Zone Valve Boxes, Gas Monitors

04

Field Services

Medical Gas Verification, 24/7 Field Service Technicians, Installation Assistance, Job Walks, Sizing & Selection, ASSE 6000 Training

05

Engineering Services

Custom solutions for compressed gases and vacuum. Medical gas design sizing and pipe layout. Support within healthcare, pharmaceutical, chemical, power, and general industrial market segments.



Ultra-reliable Electric and Gas-Fired Water Heaters



Built with AquaPLEX®
Industry's Best
Warranties



800.784.8326 | pvi.com

Aegis® Eco-Friendly CO Heat Pump Water Heaters



The Cleaner
Way to Heat

Lync®
by WATTS

817.335.9531 | lyncbywatts.com/aegis



1432 Front Ave | Lutherville, MD 21093
410-825-6616 | bayassociates.com | Jason@Bayassociates.com

A Thinner Shield is Better!

TRANSFERENCE OF TORQUE

Thicker gauge shield material blocks the torque from getting to the gasket. A thinner shield protects the gasket while allowing a more efficient transfer of torque therefore providing a better seal.

DEFLECTION

A thinner shield is more forgiving, flexible, and malleable. It bends with the joint allowing the seal to remain strong. A thick shield is rigid and does not form itself over the joint.

STEPPED JOINTS

The thinner shield allows the shield to conform over the stepped joint providing a more effective seal.



Interested in learning more? Contact Glenn Spilling, National Sales Manager
gspilling@idealtridon.com | 615-686-7826

Or visit us online at IdealTridon.com!



CHARLOTTE
PIPE AND FOUNDRY COMPANY

**A NEW LEVEL OF COATING
PERFORMANCE:
EDGE HP IRON™**

**SPECIALLY COATED CAST IRON
PIPE AND FITTINGS
FOR AGGRESSIVE DWV APPLICATIONS**

Proudly represented by The Joyce Agency

The
JOYCE AGENCY
MANUFACTURERS REPRESENTATIVE



SAL TERRANOVA
Field Technical Representative - Northeast USA
Voicemail: 704-348-2236
Cell: 704-315-9380
steranova@charlottepipe.com



SHAFER, TROXELL & HOWE Inc.

97 C Monocacy Blvd
Frederick, MD 21701

STHinc.com

Representing:

Grundfos • Peerless • Yeomans • PACO • Myers
Hydromatic • SyncroFlo • Cougar Controls • Triple Clear
Water Systems • Topp Industries • Primex Controls



Sale and Service Specialization:

Sump/Sewage Pump Stations • Water Booster Systems
Fire Pump Systems • Rainwater Harvesting Systems • Dosing Pumps
Point of Entry Water Filtration

Contact Our Engineering Account Rep

800-233-7718 • Mark.Smullen@sthinc.com



Your Solutions Partner in MD, DC, VA, DE and WV



DURAGUARD® PRODUCT LINE



Public health and safety are a common concern. Targeted for commercial applications, Bemis has a comprehensive offering of seats with DuraGuard® Antimicrobial Built-In Seat Protection™ and STAY-TITE™.

WHAT IS DURAGUARD?

DuraGuard is an antimicrobial property built into the toilet seat to inhibit the growth of bacteria. The active ingredient in DuraGuard is zinc pyrithione, a non-VOC (volatile organic compound), broad-spectrum, highly effective antimicrobial agent used to control mold, mildew, yeasts, fungi, algae, gram positive and negative bacteria. DuraGuard does not protect users or others against bacteria, viruses, germs, or other disease-causing organisms.

WHAT IS STAY-TITE?

STAY-TITE Seat Fastening System™ anchors the toilet seat to the bowl by using a patented bolt design with a finned bushing and glass-filled nylon nut, eliminating the need to retighten the seat to the bowl after installation.

**CONTACT YOUR REP FOR
ADDITIONAL INFORMATION**

OFFICE



HOSPITALITY



SCHOOLS



HEALTHCARE



EVERY SYSTEM



- Wet Flow Tested to Design Conditions—Guaranteed Performance
- ASPE Recognized 70% Redundancy for Energy Savings
- No-Flow shut down without the use of Hydropneumatic Tanks
- Standard with surge suppressor and 100k AIC SCCR disconnect



(804) 798-2600

Kemper Multi-Therm® thermostatic balancing valves have been trusted for over 25 years. Packed with unique and innovative features, these compact thermostatic balancing valves offer unparalleled ingenuity, dependability, and trustworthiness.

Thermal Disinfection

Ability to manage high temperature disinfection practice is included.

Thermal balancing cartridge

Replaceable or serviceable while valve body remains connected to piping.

Bronze valve body

Dezincified, lead free

Insulation clam shell

Option for quick & tidy installation.



Available port

This port can be used for a BMS temperature sensor probe.

Locking dial

Set screw locks in the temperature setting hidden under a protective cap.

Built in isolation valve

This feature stops the flow of water through the valve.

Adjustable temperature dial

This feature provides flexibility and allows for real-time adjustments to the HW return temperature setting.

Integrated port

This port allows for the use of an optional temperature gage (display range 0 -176°F).

Contact for more information:

• www.OttoSales.com • (804) 798-2600

KEMPER
WATER CONTROL SYSTEMS





WATER TEMPERATURE SOLUTIONS START WITH LEONARD

- Self-balancing
 - Daily self-cleaning feature
 - ± 2 °F temperature accuracy
 - Integral check valves available
 - Flow rates ideal for small to mid-sized design projects
- Self-diagnostic
 - Digital electronic control with 2-line LCD display
 - Programmable temperature setpoint
 - Easy setup/easy error coding
 - Upon power failure, holds last set temperature to avoid thermal shock

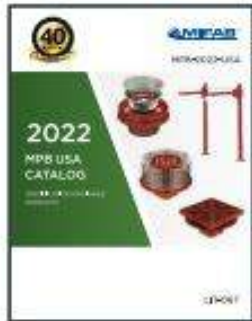
PROTON SERIES: MODEL FEATURES GUIDE				
	Proton 1.0	Proton 2.0	Proton 2.5	Proton 3.0
Simple and intuitive user commissioning and setup	•	•	•	•
Alarms for when unit maintenance is required	•	•	•	•
User programmable set point range between 65 °F and 180 °F	•	•	•	•
Automatic hot/cold water shutoff upon cold/hot water inlet supply failure	•	•	•	•
Valve controls at time of no use: 0.0 GPM*	•	•	•	•
Single valves available in 1" to 3" valve outlet sizes	•	•	•	•
Manifold assemblies available in up to 6" valve outlet sizes	•	•	•	•
Enhanced controller with programmable disinfection mode		•	•	•
Three additional temperature probes (inlet hot, inlet cold, return temp.)		+	+	•
Five relay contacts that switch on during alarm states		+	+	+
Remote alerts to assist Maintenance and Service Personnel		+	+	+
Loss of power alert		+	+	+
Broken temperature probe alert		+	+	+
"Out of range" temperature alert (± 10 °F)		+	+	+
Motor connectivity and operation alert		+	+	+
Service required @90% full shuttle movement alert		+	+	+
Enhanced controller with BACnet MS/TP connection			•	•
Enhanced controller with Wi-Fi				•

*When properly installed near the hot water source with a continuously operating recirculation pump

• Standard
+ Optional

AVAILABLE FOR IMMEDIATE SHIPMENT FROM CLINTON, MD
(301) 877-2300





**MPB-2022-USA
SPECIFICATION
DRAINAGE
(LIT-067)**



**CLPB-2022
LIGHT COMMERCIAL
PRODUCTS
(LIT-048)**



**AD-2022-USA
ACCESS DOORS
(LIT-043)**



**BECO-2022
BACKFLOW PREVENTERS
AND ACCESSORIES
(LIT-071)**



**NH-2022-06
NO HUB COUPLINGS
(LIT-044)**



**TDPC-2023
POLYMER CONCRETE
TRENCH DRAINS
(LIT-076)**



**TD-2023
GRP & STEEL
TRENCH DRAINS
(LIT-046)**



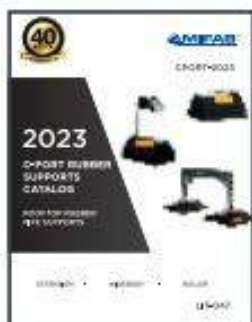
**TDSD-2023
SHOWER DRAINS
(LIT-077)**



**TDSS-2023
STAINLESS STEEL
TRENCH DRAINS
(LIT-072)**



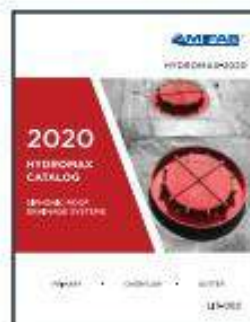
**ROOFGUARD-2020
ROOFGUARD ROOF
DOMES
(LIT-058)**



**C-PORT-2023
ROOFTOP RUBBER
PIPE SUPPORTS
(LIT-047)**



**DB-2022
DIALYSIS BOXES
(LIT-070)**



**HYDROMAX-2020
SIPHONIC DRAINAGE
(LIT-062)**



**INT-2023
INTERCEPTORS & ACID
NEUTRALIZATION TANKS
(LIT-095)**



**TSP-2022-08
TRAP SEAL
PRIMERS
(LIT-062)**





POWERS INNOVATIONS

DIGITAL MIXING SOLUTIONS ENABLE THE SAFE, EFFICIENT DELIVERY OF HOT WATER IN COMMERCIAL AND INSTITUTIONAL FACILITIES. BOTH PRODUCTS HAVE THE SAME FUNCTIONALITY BUT AT DIFFERENT FLOW CAPACITIES AND HELP TO PREVENT SCALDING WHILE SAVING ENERGY.



INTELLISTATION®

The IntelliStation®, with its large-capacity valves, is designed for use in hospitals, universities, and large hotels. The digital water mixing and recirculation solution can be integrated into a building automation system (BAS) to allow facilities managers to remotely monitor and control water temperatures. Help mitigate Legionella and other waterborne pathogens with the high-temperature sanitization mode. Key capabilities include a digital temperature regulation within $\pm 2^{\circ}\text{F}$ to ASSE 1017, even during low and zero demand periods, and is field configurable without the need for a laptop or special software.

INTELLISTATION® JR

IntelliStation® Jr. provides safe hot water consistently and on-demand for smaller applications than IntelliStation. It is also ASSE 1017 compliant, available in 3/4" through 2" sizes, and has a programmable temperature set-back/scheduling program that lowers water temperature when the building is unoccupied. Register the Jr. with the Watts OnSite mobile or web app for remote temperature control, monitoring, and visibility across locations and sublocations.

Scan the QR Code below to access the Selexit Configuration Tool.



PROUDLY PROVIDING
 THERMOSTATIC BALANCING SOLUTIONS
FOR OVER 10 YEARS

Hot Water Recirculation 

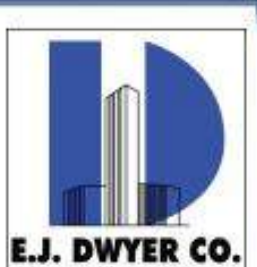


In 2012, CircuitSolver® was developed to conquer the challenges inherent to conventional manual balancing valves. As the market's first **thermostatic balancing valves** used for domestic hot water recirculation, CircuitSolver® balances a system based solely on temperature as opposed to pressure or flow to guarantee hot water at **every fixture**. Dynamically balancing a system, CircuitSolver® ultimately **ended complaints** about the lack of hot water, and eliminated balancing processes and callbacks.

Cold Water Recirculation 



Last year, we implemented our thermal actuator technology into the CircuitSolver® Union Cold Water balancing valves. These valves are installed in domestic Cold Water recirculation systems to mitigate the risk of Legionella and other bacterial growth. Cold water recirculation is becoming more prominent in hospitals to reduce water stagnation and ensure residual chlorine is distributed but can be beneficial to any commercial building that could experience periods of low flow or non-use.



 kdwyer@ejdwyer.com

 (443) 250-0285



RESINTECH INC.

INNOVATIONS IN ION EXCHANGE

Premium quality water treatment products and services for residential, commercial, and laboratory applications.

- ION EXCHANGE RESIN
- ACTIVATED CARBON
- FILTER CARTRIDGES
- LAB WATER SYSTEMS
- WATER & RESIN TESTING
- RESIN REGENERATION

Made in the USA.



Want to learn about ion exchange solutions for your application? Scan this code to explore our Lunch & Learn educational series. Schedule yours today!



Experience Ease of Installation, Integration, and Control with Lawler's Fully Electronic Mixing Valve, Neptune!



Neptune EMX Electronic Mixing Valve

- Accurate control of domestic hot water in all flow conditions
- Simple 3 button interface
- High temperature alarm
- Two valve installation in parallel with one controller
- ModBus communication standard
- Rugged lead-free stainless-steel valves
- ASSE 1017 and NSF 372 listed

Neptune EMX Electronic Mixing Valve Manifold Systems for Recirculation

- Plug-and-play
- Pre-assembled / tested
- Standard and custom designs

Contact your local rep or visit www.temperedwater.com for more information.



OMNI SERIES Heat Pump Water Heaters

TO LEARN MORE CONTACT
Jason Eagles: Bay Associates
JASON@BAYASSOCIATES.COM



PBX
Fully integrated heat pump with 40-119 gallon capacity

HHP SYSTEM

Fully configurable heat pump system with 120-5000 gallon storage capacity and fully programmable controller



BRADFORD WHITE WATER HEATERS & BOILERS

Every Solution For Any Demand

At Bradford White, we deliver the solutions you need to meet the needs of your customers. Our products are all built with quality and engineered for outstanding efficiency and performance.

We offer tank and tankless water heaters, heat pump water heaters, boilers, as well as specialty tanks and pressure vessels.

On every job, you'll get 24/7 technical support from our team to make sure the product you spec works perfectly for your customer's needs. On every job, our business is being there for your business. Scan the QR code below for our RightSpec Sizing Tools.



3930 Avion Park Court • Chantilly, VA 20151

THE JOYCE AGENCY • thejoyceagency.com

MANUFACTURERS REPRESENTATIVE

Matt Morris: mmorris@thejoyceagency.com



Built to be the Best®

©2023, Bradford White Corporation. All rights reserved.



Trusted above all.™

VXR Dry Valve

External reset feature makes the VXR a smart design with trusted technology.

The VXR is an externally resettable, latching differential valve available in sizes ranging from 2 1/2" to 6" with groove by groove connections.

The valve is available for installation on dry pipe systems and features a light weight design with a small footprint.

Viking's VXR is offered in multiple trim options!

Shop online at supplynet.com.



With Viking's Valve & System Configurator, you can fully configure a complete Viking system riser in minutes. Get started today! Scan the QR code or visit valveconfig.vikingcorp.com.





PLUMBING GROUP



Superior Performance & System Reliability

DuRa Pipe™ enhanced epoxy coating applied to cast iron soil pipe and fittings. It is well suited for aggressive DWV applications where greater performance is required.



Come see the most disruptive break through pumping technology the industry has seen in decades!

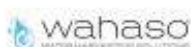


**-Eliminates the wet well;
Maintenance
-No Odors**

-Reduce excavation/construction costs

AMES, Inc. is a manufacturer's representative of water and wastewater treatment, pumping, and HVAC equipment. We serve the municipal, commercial, and industrial markets in Delaware, Maryland, Northern Virginia, West Virginia, and District of Columbia.

PARTNERING WITH THE INDUSTRY'S PREMIER BRANDS



PRODUCT OFFERINGS:

- Overwatch Direct Inline Pumping System
- Pumps
- Controls
- Water & Wastewater
- Packaged Systems
- Rainwater & Water Reuse
- Grease/Interceptor

PARTS & SERVICES

- New Construction Field Service
- Warranty & Repair
- Maintenance Contracts
- Parts & Aftermarket Sales



8918 Herman Drive | Columbia, MD 21045
www.amesinc.com | info@ames.com



**HOW CAN WE HELP?
410.995.8899**



Highland Tank®



PETROLEUM & CHEMICAL STORAGE TANKS

WASTEWATER TREATMENT SYSTEMS

GREASE REMOVAL SYSTEMS

WATER STORAGE TANKS & ASME PRESSURE VESSELS



- Motor & Aviation Fuel
- Heating & Lube Oils
- Chemicals
- Biofuels
- Propane
- Underground
- Aboveground
- Fireguard®
- Horizontal
- Vertical
- Oil/Water Separators
- Oil/Sand Interceptors
- Solids Stormwater Interceptors
- Hydrocarbon Filtration Systems
- Collection Catch Basins
- Grease Interceptors
- Interior & Exterior
- Gravity & Automatic
- Rectangular & Cylindrical
- Solids Removal
- Rainwater Harvesting
- Greywater Reuse
- Potable Water
- Fire Protection
- Stormwater Management
- Chlorine Contact
- Hydropneumatic
- Specialty Pressure Vessels

Contact: Michael VanLenten Jr
 mvanlentenjr@highlandtank.com
 Phone: 814-254-8896

Please visit us at www.highlandtank.com

Manufacturers Representative Since 1968

Harry Eklof

& Associates, Inc.

Representing:

 **CALEFFI**
Hydronic Solutions



 **FIELD CONTROLS**



 **FUJITSU** AIRSTAGE



 **Navien**



 **FLORESTONE**
A spec above.



SCAN THE QR-CODE

to get more information
on product and training!



Schedule of Events

SEPT 27	Communication Skills for Construction & Consulting	BJ Allen Warfel Construction
OCT 25	Vacuum System Design	Nikita Patel Sherman Engineering
NOV 16	Generator Basics	Jim Webster Kelly Generator & Equip.
DEC 13	Air Compressors	Will Dargan Cummins Wagner
JAN 24	Grease Interceptors	Schier Products
FEB 28	Fire Protection Specialties	Ken Isman University of Maryland
MAR 27	Fire Protection- Pre-Action Systems and Clean Agents	Josh Shapiro Reliable Sprinkler Co
APR 24	Siphonic Roof Drains	UV Systems
APR 2024	Annual Golf Tournament	Details to Follow
MAY 22	Natural Gas Sizing	Chuck Swope Mueller Associates ASPE Baltimore President
JUN TBD	Annual Summer Party	Details to Follow

MONTHLY
SPONSORSHIP
OPPORTUNITIES

Tabletop Presentations: \$100 to provide a tabletop presentation of equipment or material relative to the plumbing profession. The tabletops will be set up from the beginning to the end of the monthly meeting and provides the opportunity to provide a brief (under 5 minutes) presentation.

Please make checks payable to the Baltimore Chapter of ASPE. Contact Kathy Dwyer or Chuck Swope if interested