



IN THIS ISSUE



Board of Directors	Page 2
President's Report	Page 3
VP Technical Report	Page 5
Education Chair Report	Page 7
Tech Corner	Page 8
VP Membership Report	Page 12
WOA Report	Page 14

MEETING FORMAT

6:00 – 6:30	Social
6:30 – 6:45	Announcements & Table Tops
6:45	Dinner Served
7:00 – 8:00	Presentation

DATE:	May 24, 2024
TIME:	6:00pm to 8:00pm
PLACE:	Olive Grove Restaurant
TOPIC	Natural Gas 101
SPEAKER:	Chuck Swope ASPE Baltimore President


[Register Today](#)



Olive Grove
Restaurant & Lounge

705 N. HAMMONDS FERRY ROAD, LINTHICUM, MD 21090
PHONE: 410-636-1385



 Local Chapters are not authorized to speak for the Society.
Newsletter questions? Please contact [Nikita Patel](#)

ASPE Baltimore Board of Directors



President

Charles J. Swope, PE, CPD, LEED AP B+C
Mueller Associates
president@baltimoreaspe.com



Vice President- Technical

Julian Chival, LEED AP BD+C
Julian.Chival@gmail.com



Vice President- Legislative

Christopher Imhof, PE, CPD
WSSC
Christopher.Imhof@wsscwater.com



VP- Affiliate, Scholarship & Historian

Jason J. Eagles
Bay Associates Group
Jason@bayassociates.com



Treasurer

Kathleen Dwyer-Stephens
EJ Dwyer Company, Inc.
KDwyer@ejdwyer.com



Vice President- Membership

Brian Crisp, CPD
Johnson, Mirmiran & Thompson
BCrisp@jmt.com



Education Chair

Nikita Patel, PE
Sherman Engineering Company
npatel@shermanengineering.com



Women of ASPE- Liaison

Karen Schulte, PE, CPD
Mueller Associates
KSchulte@muellerassoc.com



ASPE Young Professionals - Liaison

Nicole Murphy
Harry Eklof
nmurphy@harryeklof.com



Administrative Secretary

Jay Otto
Otto Sales
JayOtto@ottosales.com



Corresponding Secretary

Matt Obenchain, PE
Min Engineering, Inc.
Matt.Obenchain@minengineering.com

Newsletter Advertising

- As a paid advertiser, you will have your advertisement in the newsletter for one full year (9 editions) and company logo displayed on the Chapter website.
- Ads for the year will begin in the September issue and run through the May issue.
- All ads must be paid in full prior to the advertisement being included in the newsletter.
- Advertiser must provide ads in high resolution PDF format. Logo must be provided in .jpeg format, 200px wide size
- Cost per advertisement is as follows:
 - Full Page \$ 750.00
 - Half Page \$ 500.00
- Please contact Nikita Patel or Chuck Swope
- Make checks payable to Baltimore Chapter of ASPE. Please contact the Chapter Treasurer with any questions.



Chuck Swope, PE, CPD, LEED AP BD+C
Chapter President

It's hard to believe that it's the end of the season already! While it is the officially the last regular meeting of the season, those of us that have been around can say that Baltimore ASPE is never done. For now, let's focus on what's coming up in May.

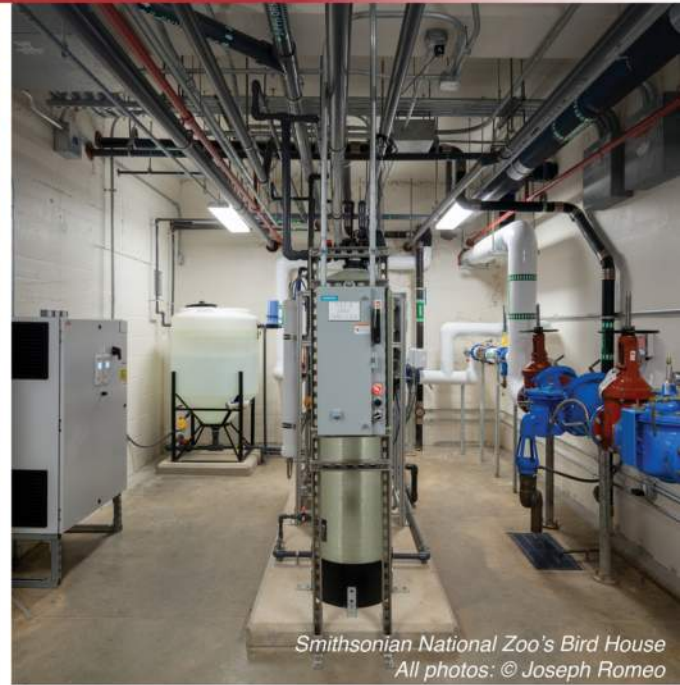
First and foremost, we'll be holding chapter elections at the beginning of our meeting. With all the national and local politics going on, isn't it nice to vote for someone you like for a change? I'd like to say a special thank you to our current board. We truly have excellent people serving both our day to day needs and our special events! If you're interested in joining our board, please let us know. It's never too late. Even if a position is filled, we can form small committees to help our board members succeed.

Another thing that needs to be brought to the forefront is our commitment to our future engineers. Did you know that the John Jung Endowed Scholarship has been awarded since 2009? This scholarship is awarded to engineering students that attend the Community College of Baltimore County (CCBC) who are interested in pursuing a career in the consultant mechanical engineering fields. A recent recipient, Tyler Simms, parlayed his education at CCBC to Loyola where he graduated and has a successful career in Richmond. Baltimore ASPE founded this scholarship in the honor of John Jung, a mentor to our longstanding board member Jason Eagles, and who is fondly remembered by our tenured chapter members. Jason and I will be presenting at CCBC again this month to further solicit applications. If there is anyone who knows a current or future student in the engineering program at CCBC, please let us know!

Also this month, we will be hosting our annual joint event with the Local Plumbers and Steamfitters Union UA 486 on May 15th. This is a very successful event that I mention any chance I can get! Thanks so much to our Education Chair, Niki Patel, for keeping this going year after year. Please look for the flyer for more information, but there's a lot to talk about this time around. In addition to our popular hands-on demos in cast iron, copper, and plastic piping, we're introducing a new program for this year: a mini-product show. This is a chance for our affiliates to show off their new technologies and refresh us on their longstanding offerings.

Last, but not least, our May technical topic promises to be an interesting one. We've touched on natural gas discussions for a while now, but it's been a while since we've discussed it on a basic level. We've discussed with the DC ASPE board and felt like that we could address a beginner level topic presented by an experienced engineer as their peer. You can read more on that in Julian's VP Technical Article. It is my pleasure to be the first presenter in this series, but please don't think it's because we've run out of presenters. It's quite the opposite in fact. We've so many requests for presentations that we always have to cut presentations and hold them in the following season or hold them as special events. This is where Baltimore ASPE comes to shine, education and entertainment!

SUPPORT FOR ASPE BALTIMORE



Smithsonian National Zoo's Bird House
All photos: © Joseph Romeo



Dedicated to advancing plumbing engineering excellence, fostering health, environmental sustainability, and economic prosperity



Mueller

Mueller Associates
1306 Concourse Drive, Suite 100
Linthicum, MD 21090
www.muellerassoc.com
410.646.4500

ENGINEERING GREAT EXPERIENCES



Julian Chival, LEED AP BD+C
Vice President- Technical

Before we dive into the delightful details of our May meeting, let's take a moment to extend a hearty thank you to all who attended our previous monthly meeting. A special shout-out to our presenter, Jay Stenklyft, whose enlightening discourse on siphonic roof drain systems had us all on the edge of our seats. If you are considering using a siphonic roof drain system on a future project, or have any other questions about the technology, Jay would be happy to help. He can be reached at Jay.Stenklyft@UV-System.com.

Now, let's turn our attention to the future—specifically, to our upcoming monthly meeting on May 22. Mark your calendars, folks, because this one promises to be a gas! We're thrilled to announce that Chuck Swope will be taking the stage to enlighten us on the intricacies of natural gas design in commercial buildings. As both the Chief Mechanical Engineer at Mueller Associates and the President of our very own ASPE Baltimore chapter, Chuck brings a wealth of knowledge and experience to the table (or podium, as the case may be). Whether you're a seasoned pro or a piping padawan, be sure to join us for what's sure to be an illuminating discussion. As always, we encourage you to bring your questions, your curiosity, and I'd especially recommend you invite some young engineers from your office to attend as well!

Looking even further ahead, much of the planning for next season will happen this summer, which includes setting a schedule for technical presentations and presenters. If you have a topic you like to present, or something you'd like to learn more about, now is your best chance to have an impact. Do you want more topics that cater to a younger audience, or deep dives into design practices, or more explorations of niche technologies? All feedback and suggestions are welcome.

Best,
Julian Chival
Vice President- Technical



YOU ARE INVITED TO ATTEND
ASPE/UA486

Industry Night

With hands on demos in **cast iron, copper, and plastic** pipe, attendees will learn key joining methods. Already experienced? Attend our mini product show to learn more about all types of plumbing products and devices

Apprenticeship Training School, 1201 66th St, Rosedale, MD 21237

DATE: MAY 15
TIME: 6-8PM*

*Doors open 5PM

REGISTER NOW





Nikita Patel, PE
Education Chair

I'm very excited to announce invite you to our upcoming ASPE & UA486 hosted Industry Night at the Local 486 Training Center on Wednesday, May 15th! We've got a great mini product show lined up to allow you to explore all the great technologies our affiliates have to offer. You, and all of your colleagues, will have the chance to go through these booths, and also get hands on demonstrations on fitting cast iron pipe, brazing copper, and assembling plastic pipe! This is an opportunity you don't want to miss, after all, how many specifying engineers can actually say they personally know how to do all that? This year's event is sure to be a blast, but we can't have a good time without you there. Please register to attend on our website or let anyone on the Board know you'll be there. We wouldn't want to send you home without a full belly!

The ASPE Convention is coming to Columbus, OH! This year, attendees will get to enjoy all the city has to offer AND MORE! The trade show/expo floor will be hopping as usual, and there will be over 20 classes offered for credit. The ASPE Education Committee worked really hard to prepare this year's selection of courses, and having been rejected and accepted in the past, I can tell you there will be so much to offer for all levels of Plumbing Engineers. Please register as an exhibitor or conference attendee using [this link](#) today. Earlier in April, I had the opportunity to tour the expo space, seminar rooms, and more. Trust me, you'll want to be there! Not sure how to fund your travel? We've got your back. Society has prepared great material to help justify your attendance to your employer, learn more at <https://expo.aspe.org/justify-your-attendance/>.

Nikita Patel, PE
Education Chair
AYP Liaison to the Board
npatel@shermanengineering.com

Water Is the New Fire

Effective water management solutions are critical for an intelligent plumbing system.

April 1, 2024

Unlike typical monitored building systems such as HVAC and fire protection, plumbing systems are dynamic by design. Due to the inherent fluctuating demands of flow, temperature and pressure, they have historically lacked real-time management systems. This gap allows system creep to happen where, over time, plumbing systems operate beyond their optimal parameters without any feedback to the owners or operators, contributing to the common failure through pipe erosion or the impact of fluctuating pressure and hydraulic shock on equipment.

These failures lead to significant amounts of lost water, which, in the form of leaks and water damage, can cause project delays, require costly emergency remediation and repair services, add to customer inconvenience and dissatisfaction, and contribute to steeply rising insurance costs. In the end, the failure to properly manage water in buildings could set a construction project back months and cripple a tight budget of an operational building.

In addition, the lack of visibility on water usage in commercial buildings can be a significant obstacle to sustainability goals. Treating, delivering and heating the water supply requires an enormous energy output, accounting for 13% of total electricity consumption in the United States.

That level of energy usage results in an estimated 290 million metric tons of carbon emissions every year – approximately 5% of the total emissions produced in the United States and equal to the carbon output of 60 coal-fired power plants.

Plumbing industry standards still rely on antiquated benchmarks like the Hunter's Curve and do not accurately capture modern water usage patterns.

Systems designed according to these outdated standards face challenges in properly maintaining today's systems configuration and demands.

Plumbing engineers are responsible for foreseeing and designing systems that maintain their integrity and operational capability far beyond the construction phase and well into the operational phase of a building without significant system creep, ensuring that water systems are visible and operating within parameters for the lifespan of the building.

Indeed, plumbing engineers are on the front lines of this ongoing water management crisis. However, by applying new technology solutions, plumbing designers can help owners and operators dramatically improve efficiency and achieve immediately noticeable savings. In an increasingly competitive market, with ongoing labor shortages, rising material costs and an uncertain overall economic forecast, robust management of this critical resource can be a major competitive advantage.

By incorporating tech innovations into their projects, plumbing engineers can help clients save water, energy and money while establishing professional credibility and a reputation as trusted advisors. Empowering the industry to reach sustainability benchmarks by reducing carbon emissions allows clients to position themselves as leaders in this space. It encourages them to obtain sustainability certifications increasingly required for environmental, social and governance (ESG) target validation.

With new technologies powered by artificial intelligence and the Internet of Things, water loss and related risks can be addressed at the source. Real-time data-driven water management solutions transform companies to proactively optimize water use and mitigate waste and risk throughout the lifecycle of a building. Advanced leak detection and analytics solutions support the building's complete lifecycle, from construction to operational phase.

Water Is the New Fire

Effective water management solutions should include capabilities such as:

- High-accuracy detection of water abnormalities with minimum false alarms;
- Automatically shutting off the water to isolate building systems and mitigate potential damages;
- The ability to connect multiple systems across large buildings and facilities;
- Backup power to ensure uninterrupted operation even during power outages;
- Autonomous operation and local data storage in case of communication failures;
- The ability to monitor and detect anomalies on all types of water systems in the facility, including main feeds, domestic cold water, irrigation, cooling towers, sprinklers and HVAC.

Minimizing the Empire State Building's Environmental Footprint

A case in point is the Empire State Realty Trust (ESRT), an enterprise responsible for a large commercial real estate portfolio. The company installed these systems at the iconic Empire State Building in New York City in order to reduce water waste and carbon emissions while meeting operation and sustainability standards. The company had two major goals for the structure:

1. To optimize water consumption and reduce the building's overall environmental footprint, including water and its associated carbon footprint.
2. To detect and limit leaks before they can cause significant damage to the facility.

Because ESRT's policy requires a positive return on investment (ROI) before implementing any new technology, these goals were specifically tied to concrete ROI requirements. To achieve its goals, the systems were deployed in multiple locations in the Empire State Building, including risers, cooling towers and other locations suggested by mechanical, electrical and plumbing engineers. Machine-learning algorithms monitor water flows in real time and alert staff when anomalies are detected.

Over the first 12-month period, ESRT:

- Cut 7.5 million gallons of water waste;
- Saved more than \$100,000;
- Reduced carbon emissions by more than 300 metric tons a year;
- Prevented significant water damage.
- During the same period, ESRT exceeded each of its target metrics by:
- Providing early detection of multiple anomalies in various water-related equipment, including cooling towers and pumps;
- Detecting and preventing significant water damage from a pump failure on a high floor;
- Identifying previously invisible sources of waste.

ESRT significantly minimized the Empire State Building's overall environmental footprint, combining water savings and reduced carbon emissions. It also eliminated a potentially damaging leak incident on a high floor. Finally, ESRT returned the investment within three months, significantly faster than the typical ROI for similar ESG and other infrastructure projects.

Insurance companies recognize the gravity of the situation. The recently coined phrase "water is the new fire" underscores the rising number of claims for water damage, which now outnumber fire-related claims. As insurers see the potential savings afforded by proactive water management, they are increasingly covering these systems and advocating for their mandatory inclusion in new developments.

Water Is the New Fire

To effectively tackle the challenges of water in commercial buildings, it's essential to shed light on the various impacts we covered. Buildings consume a sizable portion of the public water supply, and with this comes a responsibility for sustainable management. Yet, without innovative approaches and the integration of real-time monitoring and control systems, the industry is navigating in the dark.

It's high time we reimagine plumbing systems not as isolated networks but as integral, intelligent components of a building's overall functionality. With water management and leak detection technology leading the charge, plumbing engineers can now design with foresight, creating systems that not only serve today's requirements but anticipate the future's demands.

Avishai Moscovich, MBA, PE, PEng., LEED AP, currently head of partnerships at WINT – Water Intelligence, is a seasoned professional with a rich plumbing engineering and water management background. He is known for his contributions to the ASPE Pipeline and the ASPE Plumbing Engineering Design Handbooks, as well as his active involvement in key industry committees such as the ASPE Main Design Standards and IAPMO Plumbing Standards Committee. His balanced blend of engineering knowledge and business acumen positions him as a prominent figure in advancing sustainable plumbing practices.



E.J. Dwyer Company

10910 Pump House RD
Annapolis Junction, MD 20701

+ years of professional service!

Proudly representing quality BAA compliant products:

AGS

americangassafety.com

Laboratory, Kitchen, CO2, Gas detector UL approved valves & enclosures. Emergency off button w/valve. Complete utility control for water. Merlin digital controller. **In Stock!**

Aquarius Showers

aquariusproducts.com

Residential & commercial. Acrylic & gel-coat ADA compliant showers. Barrier free shower pans + tube replacement pans. **In Stock!**

Bradley Corporation

bradleycorp.com

Washfountains, lavatory centers, Halo emergency fixtures, repair parts. Natural quartz Evero, Verge, Advocate, Omni Deck, Washbar. Washrooms accessories. **In Stock!**

Chicago Faucet Company

chicagofaucets.com

Quality faucets for commercial applications, now offering sensor faucets. Meet the no-lead laws with our E-cast products. Food service for your entire kitchen, restaurant needs. Full lines of back mount, deck mount styles with pre-rinse, glass & pot fillers, faucets built to last! **In Stock!**

Chronomite Heaters

chronomite.com

Electric instantaneous hot water heaters from 0.2gpm to high capacity. Instant-micro & insta-temp digital mixers for multiple applications. Including **Omni** laminar flow controls. **In Stock!**

Circuit Solver

circuitsolver.com

Thermostatic balancing valve, automatically & continuously maintains recirc temperature. Manufactured by **ThermOmegaTech**, inline valve eliminates time consuming balancing procedures.

Comfort Designs

comfortdesignsbathware.com

ADA compliant, tile finish & tub replacement fixtures. Shower pans, ADA units, multi-piece with solid surface finish. Asura trench drain. New integral trench drain w/zero threshold shower systems. **In Stock!**

Filtrine Drinking Fountains

Filtrine.com

Drinking water products with a tradition of superior quality craftsmanship. Bottle filling stations, chillers, UV purifiers. Taste master carbon filters with stainless steel housing.

Keltech Tankless Heaters

keltech-inc.com

Commercial, industrial, & emergency applications. Precisely engineered, for quality tankless performance to suite your needs. 5kW to 144kW, ASME.

ThermOmegaTech

thermomegatech.com

Drain tempering valve - DTV - to add cold water to drain lines for codes. The STV - steam wash down station high temp mixing w/hose & wash down gun. Scald guard & freeze protection valves for emergency fixtures.



Contact Us:

www.ejdwyer.com

Phone: 240-553-0112

Fax: 888-811-4830

customerservice@ejdwyer.com

Kathy Dwyer - kdwyer@ejdwyer.com - 443-250-0285





Brian Crisp, CPD, GPD
Vice President- Membership

Membership Report

Check out these awesome awards our members receive for their continue support to the Baltimore Chapter! We like to recognize those who have been members of our chapter at the 10, 20 & 30 year benchmarks. These awards will look fantastic on your desk and show off your love for Plumbing. We also have a new program to recognize our 5 year members this year, more on that to come.



Please help me thank the following people for their continued support to the Baltimore Chapter:

30 Year Membership Award:

Cory Colassard, David Crutchfield, Robert Weaver

20 Year Membership Award:

Thomas King, Michael Shacklock

10 Year Membership Award:

Pramod Maheshwari, Sam Philipp, Kevin Heikkinen, Ron Saunders, Erik Jankowiak

Thanks and see you at the meetings!

Brian Crisp, CPD, GPD

Vice President, Membership

bcrisp@jmt.com

ARE YOU RESPONSIBLE FOR DESIGNING COMPRESSED GAS AND VACUUM SYSTEMS?



SINCE 1920, SHERMAN ENGINEERING

has been offering the optimum engineered vacuum and compressed gas systems in the Healthcare, Pharmaceutical, Chemical, Power, and General Industrial markets.

OFFERING 24/7 EMERGENCY SERVICE

our factory trained and ASSE 6000 credentialed service technicians are available to manage preventative maintenance and emergency outages.



QUESTIONS? CONTACT US

(215) 340-5300

www.shermanengineering.com

1830 County Line Rd, Unit 303

Huntingdon Valley, PA 19006

01

Vacuum Pumps

Liquid Ring, Dry Rotary Vane, Dry Rotary Claw, Lubricated Rotary Screw, Lubricated Rotary Claw, Lubricated Rotary Vane, Ejectors

02

Compressors

Oil Less Scroll, Oil Free Rotary Screw, Oil Free Rotary Claw, Oil Flooded Rotary Screw, Oil Flooded Reciprocating, Dryers, Drains, Purifiers, Filtration, Lubricants

03

Medical Gases

ASSE 6060 Design Support, Medical Vacuum, Medical Air, Compressed Gas Manifolds, Medical Gas Outlets, Ceiling Columns, Pedestals, Alarm Panels, Zone Valve Boxes, Gas Monitors

04

Field Services

Medical Gas Verification, 24/7 Field Service Technicians, Installation Assistance, Job Walks, Sizing & Selection, ASSE 6000 Training

05

Engineering Services

Custom solutions for compressed gases and vacuum. Medical gas design sizing and pipe layout. Support within healthcare, pharmaceutical, chemical, power, and general industrial market segments.





Karen Schulte, PE, CPD, LEED AP BD + C
Women of ASPE Liaison

Huge thanks to Barger Agency and Delta for their sponsorship of our Women of ASPE event in April!

We had a wonderful evening learning about the artistry of creating glass objects from molten glass. Each of our attendees were able to create a unique glass (or starfish or flower) with a little help from the expert teachers at McFadden Art Glass. It was fun evening where we each got to dip into our creative sides.



Ultra-reliable Electric and Gas-Fired Water Heaters



Built with AquaPLEX®
Industry's Best
Warranties



800.784.8326 | pvi.com

Aegis® Eco-Friendly CO Heat Pump Water Heaters



The Cleaner
Way to Heat

Lync®
by WATTS

817.335.9531 | lyncbywatts.com/aegis



1432 Front Ave | Lutherville, MD 21093
410-825-6616 | bayassociates.com | Jason@Bayassociates.com

A Thinner Shield is Better!

TRANSFERENCE OF TORQUE

Thicker gauge shield material blocks the torque from getting to the gasket. A thinner shield protects the gasket while allowing a more efficient transfer of torque therefore providing a better seal.

DEFLECTION

A thinner shield is more forgiving, flexible, and malleable. It bends with the joint allowing the seal to remain strong. A thick shield is rigid and does not form itself over the joint.

STEPPED JOINTS

The thinner shield allows the shield to conform over the stepped joint providing a more effective seal.



Interested in learning more? Contact Glenn Spilling, National Sales Manager
gspilling@idealtridon.com | 615-686-7826

Or visit us online at IdealTridon.com!



CHARLOTTE
PIPE AND FOUNDRY COMPANY

**A NEW LEVEL OF COATING
PERFORMANCE:
EDGE HP IRON™**

**SPECIALLY COATED CAST IRON
PIPE AND FITTINGS
FOR AGGRESSIVE DWV APPLICATIONS**

Proudly represented by The Joyce Agency

The
JOYCE AGENCY
MANUFACTURERS REPRESENTATIVE



SAL TERRANOVA
Field Technical Representative - Northeast USA
Voicemail: 704-348-2236
Cell: 704-315-9380
steranova@charlottepipe.com



SHAFER, TROXELL & HOWE Inc.

97 C Monocacy Blvd
Frederick, MD 21701

STHinc.com

Representing:

Grundfos • Peerless • Yeomans • PACO • Myers
Hydromatic • SyncroFlo • Cougar Controls • Triple Clear
Water Systems • Topp Industries • Primex Controls



Sale and Service Specialization:

Sump/Sewage Pump Stations • Water Booster Systems
Fire Pump Systems • Rainwater Harvesting Systems • Dosing Pumps
Point of Entry Water Filtration



Contact Our Engineering Account Rep

800-233-7718 • Mark.Smullen@sthinc.com

Your Solutions Partner in MD, DC, VA, DE and WV



DURAGUARD® PRODUCT LINE



Public health and safety are a common concern. Targeted for commercial applications, Bemis has a comprehensive offering of seats with DuraGuard® Antimicrobial Built-In Seat Protection™ and STAY-TITE™.

WHAT IS DURAGUARD?

DuraGuard is an antimicrobial property built into the toilet seat to inhibit the growth of bacteria. The active ingredient in DuraGuard is zinc pyrithione, a non-VOC (volatile organic compound), broad-spectrum, highly effective antimicrobial agent used to control mold, mildew, yeasts, fungi, algae, gram positive and negative bacteria. DuraGuard does not protect users or others against bacteria, viruses, germs, or other disease-causing organisms.

WHAT IS STAY-TITE?

STAY-TITE Seat Fastening System™ anchors the toilet seat to the bowl by using a patented bolt design with a finned bushing and glass-filled nylon nut, eliminating the need to retighten the seat to the bowl after installation.

**CONTACT YOUR REP FOR
ADDITIONAL INFORMATION**

OFFICE



HOSPITALITY



SCHOOLS



HEALTHCARE



EVERY SYSTEM



- Wet Flow Tested to Design Conditions—Guaranteed Performance
- ASPE Recognized 70% Redundancy for Energy Savings
- No-Flow shut down without the use of Hydropneumatic Tanks
- Standard with surge suppressor and 100k AIC SCCR disconnect



(804) 798-2600

Kemper Multi-Therm® thermostatic balancing valves have been trusted for over 25 years. Packed with unique and innovative features, these compact thermostatic balancing valves offer unparalleled ingenuity, dependability, and trustworthiness.

Thermal Disinfection

Ability to manage high temperature disinfection practice is included.

Thermal balancing cartridge

Replaceable or serviceable while valve body remains connected to piping.

Bronze valve body

Dezincified, lead free

Insulation clam shell

Option for quick & tidy installation.



Available port

This port can be used for a BMS temperature sensor probe.

Locking dial

Set screw locks in the temperature setting hidden under a protective cap.

Built in isolation valve

This feature stops the flow of water through the valve.

Adjustable temperature dial

This feature provides flexibility and allows for real-time adjustments to the HW return temperature setting.

Integrated port

This port allows for the use of an optional temperature gage (display range 0 -176°F).

Contact for more information:

• www.OttoSales.com • (804) 798-2600

KEMPER
WATER CONTROL SYSTEMS





WATER TEMPERATURE SOLUTIONS START WITH LEONARD

- Self-balancing
 - Daily self-cleaning feature
 - ± 2 °F temperature accuracy
 - Integral check valves available
 - Flow rates ideal for small to mid-sized design projects
- Self-diagnostic
 - Digital electronic control with 2-line LCD display
 - Programmable temperature setpoint
 - Easy setup/easy error coding
 - Upon power failure, holds last set temperature to avoid thermal shock

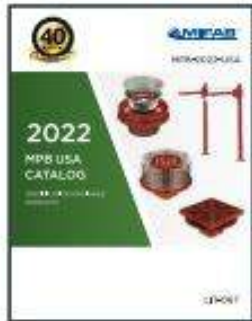
PROTON SERIES: MODEL FEATURES GUIDE				
	Proton 1.0	Proton 2.0	Proton 2.5	Proton 3.0
Simple and intuitive user commissioning and setup	•	•	•	•
Alarms for when unit maintenance is required	•	•	•	•
User programmable set point range between 65 °F and 180 °F	•	•	•	•
Automatic hot/cold water shutoff upon cold/hot water inlet supply failure	•	•	•	•
Valve controls at time of no use: 0.0 GPM*	•	•	•	•
Single valves available in 1" to 3" valve outlet sizes	•	•	•	•
Manifold assemblies available in up to 6" valve outlet sizes	•	•	•	•
Enhanced controller with programmable disinfection mode		•	•	•
Three additional temperature probes (inlet hot, inlet cold, return temp.)		+	+	•
Five relay contacts that switch on during alarm states		+	+	+
Remote alerts to assist Maintenance and Service Personnel		+	+	+
Loss of power alert		+	+	+
Broken temperature probe alert		+	+	+
"Out of range" temperature alert (± 10 °F)		+	+	+
Motor connectivity and operation alert		+	+	+
Service required @90% full shuttle movement alert		+	+	+
Enhanced controller with BACnet MS/TP connection			•	•
Enhanced controller with Wi-Fi				•

*When properly installed near the hot water source with a continuously operating recirculation pump

• Standard
+ Optional

AVAILABLE FOR IMMEDIATE SHIPMENT FROM CLINTON, MD
(301) 877-2300





**MPB-2022-USA
SPECIFICATION
DRAINAGE
(LIT-067)**



**CLPB-2022
LIGHT COMMERCIAL
PRODUCTS
(LIT-048)**



**AD-2022-USA
ACCESS DOORS
(LIT-043)**



**BECO-2022
BACKFLOW PREVENTERS
AND ACCESSORIES
(LIT-071)**



**NH-2022-06
NO HUB COUPLINGS
(LIT-044)**



**TDPC-2023
POLYMER CONCRETE
TRENCH DRAINS
(LIT-076)**



**TD-2023
GRP & STEEL
TRENCH DRAINS
(LIT-046)**



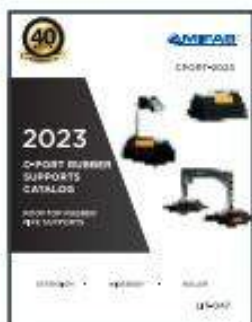
**TDSD-2023
SHOWER DRAINS
(LIT-077)**



**TDSS-2023
STAINLESS STEEL
TRENCH DRAINS
(LIT-072)**



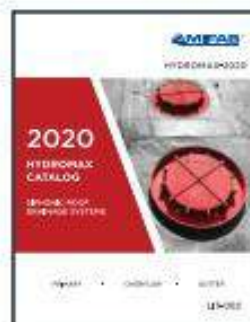
**ROOFGUARD-2020
ROOFGUARD ROOF
DOMES
(LIT-058)**



**C-PORT-2023
ROOFTOP RUBBER
PIPE SUPPORTS
(LIT-047)**



**DB-2022
DIALYSIS BOXES
(LIT-070)**



**HYDROMAX-2020
SIPHONIC DRAINAGE
(LIT-062)**



**INT-2023
INTERCEPTORS & ACID
NEUTRALIZATION TANKS
(LIT-095)**



**TSP-2022-08
TRAP SEAL
PRIMERS
(LIT-062)**





POWERS INNOVATIONS

DIGITAL MIXING SOLUTIONS ENABLE THE SAFE, EFFICIENT DELIVERY OF HOT WATER IN COMMERCIAL AND INSTITUTIONAL FACILITIES. BOTH PRODUCTS HAVE THE SAME FUNCTIONALITY BUT AT DIFFERENT FLOW CAPACITIES AND HELP TO PREVENT SCALDING WHILE SAVING ENERGY.



INTELLISTATION®

The IntelliStation®, with its large-capacity valves, is designed for use in hospitals, universities, and large hotels. The digital water mixing and recirculation solution can be integrated into a building automation system (BAS) to allow facilities managers to remotely monitor and control water temperatures. Help mitigate Legionella and other waterborne pathogens with the high-temperature sanitization mode. Key capabilities include a digital temperature regulation within $\pm 2^{\circ}\text{F}$ to ASSE 1017, even during low and zero demand periods, and is field configurable without the need for a laptop or special software.

INTELLISTATION® JR

IntelliStation® Jr. provides safe hot water consistently and on-demand for smaller applications than IntelliStation. It is also ASSE 1017 compliant, available in 3/4" through 2" sizes, and has a programmable temperature set-back/scheduling program that lowers water temperature when the building is unoccupied. Register the Jr. with the Watts OnSite mobile or web app for remote temperature control, monitoring, and visibility across locations and sublocations.

Scan the QR Code below to access the Selexit Configuration Tool.



PROUDLY PROVIDING
 THERMOSTATIC BALANCING SOLUTIONS
FOR OVER 10 YEARS

Hot Water Recirculation 



In 2012, CircuitSolver® was developed to conquer the challenges inherent to conventional manual balancing valves. As the market's first **thermostatic balancing valves** used for domestic hot water recirculation, CircuitSolver® balances a system based solely on temperature as opposed to pressure or flow to guarantee hot water at **every fixture**. Dynamically balancing a system, CircuitSolver® ultimately **ended complaints** about the lack of hot water, and eliminated balancing processes and callbacks.

Cold Water Recirculation 



Last year, we implemented our thermal actuator technology into the CircuitSolver® Union Cold Water balancing valves. These valves are installed in domestic Cold Water recirculation systems to mitigate the risk of Legionella and other bacterial growth. Cold water recirculation is becoming more prominent in hospitals to reduce water stagnation and ensure residual chlorine is distributed but can be beneficial to any commercial building that could experience periods of low flow or non-use.



kdwyer@ejdwyer.com



(443) 250-0285



RESINTECH INC.

INNOVATIONS IN ION EXCHANGE

Premium quality water treatment products and services for residential, commercial, and laboratory applications.

- ION EXCHANGE RESIN
- ACTIVATED CARBON
- FILTER CARTRIDGES
- LAB WATER SYSTEMS
- WATER & RESIN TESTING
- RESIN REGENERATION

Made in the USA.



Want to learn about ion exchange solutions for your application? Scan this code to explore our Lunch & Learn educational series. Schedule yours today!



Experience Ease of Installation, Integration, and Control with Lawler's Fully Electronic Mixing Valve, Neptune!



Neptune EMX Electronic Mixing Valve

- Accurate control of domestic hot water in all flow conditions
- Simple 3 button interface
- High temperature alarm
- Two valve installation in parallel with one controller
- ModBus communication standard
- Rugged lead-free stainless-steel valves
- ASSE 1017 and NSF 372 listed

Neptune EMX Electronic Mixing Valve Manifold Systems for Recirculation

- Plug-and-play
- Pre-assembled / tested
- Standard and custom designs

Contact your local rep or visit www.temperedwater.com for more information.



OMNI SERIES Heat Pump Water Heaters

TO LEARN MORE CONTACT
Jason Eagles: Bay Associates
JASON@BAYASSOCIATES.COM



PBX
Fully integrated heat pump with 40-119 gallon capacity

HHP SYSTEM

Fully configurable heat pump system with 120-5000 gallon storage capacity and fully programmable controller



BRADFORD WHITE WATER HEATERS & BOILERS

Every Solution For Any Demand

At Bradford White, we deliver the solutions you need to meet the needs of your customers. Our products are all built with quality and engineered for outstanding efficiency and performance.

We offer tank and tankless water heaters, heat pump water heaters, boilers, as well as specialty tanks and pressure vessels.

On every job, you'll get 24/7 technical support from our team to make sure the product you spec works perfectly for your customer's needs. On every job, our business is being there for your business. Scan the QR code below for our RightSpec Sizing Tools.



3930 Avion Park Court • Chantilly, VA 20151

THE JOYCE AGENCY • thejoyceagency.com

MANUFACTURERS REPRESENTATIVE

Matt Morris: mmorris@thejoyceagency.com



Built to be the Best®

©2023, Bradford White Corporation. All rights reserved.



Trusted above all.™

VXR Dry Valve

External reset feature makes the VXR a smart design with trusted technology.

The VXR is an externally resettable, latching differential valve available in sizes ranging from 2 1/2" to 6" with groove by groove connections.

The valve is available for installation on dry pipe systems and features a light weight design with a small footprint.

Viking's VXR is offered in multiple trim options!

Shop online at supplynet.com.



With Viking's Valve & System Configurator, you can fully configure a complete Viking system riser in minutes. Get started today! Scan the QR code or visit valveconfig.vikingcorp.com.





PLUMBING GROUP



Superior Performance & System Reliability

DuRa Pipe™ enhanced epoxy coating applied to cast iron soil pipe and fittings. It is well suited for aggressive DWV applications where greater performance is required.



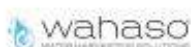
Come see the most disruptive break through pumping technology the industry has seen in decades!



- Eliminates the wet well;
Maintenance**
- No Odors**
- Reduce excavation/construction costs**

AMES, Inc. is a manufacturer's representative of water and wastewater treatment, pumping, and HVAC equipment. We serve the municipal, commercial, and industrial markets in Delaware, Maryland, Northern Virginia, West Virginia, and District of Columbia.

PARTNERING WITH THE INDUSTRY'S PREMIER BRANDS



PRODUCT OFFERINGS:

- Overwatch Direct Inline Pumping System
- Pumps
- Controls
- Water & Wastewater
- Packaged Systems
- Rainwater & Water Reuse
- Grease/Interceptor

PARTS & SERVICES

- New Construction Field Service
- Warranty & Repair
- Maintenance Contracts
- Parts & Aftermarket Sales



8918 Herman Drive | Columbia, MD 21045
www.amesinc.com | info@ames.com



**HOW CAN WE HELP?
410.995.8899**



Highland Tank®



PETROLEUM & CHEMICAL STORAGE TANKS

WASTEWATER TREATMENT SYSTEMS

GREASE REMOVAL SYSTEMS

WATER STORAGE TANKS & ASME PRESSURE VESSELS



- Motor & Aviation Fuel
- Heating & Lube Oils
- Chemicals
- Biofuels
- Propane
- Underground
- Aboveground
- Fireguard®
- Horizontal
- Vertical
- Oil/Water Separators
- Oil/Sand Interceptors
- Solids Stormwater Interceptors
- Hydrocarbon Filtration Systems
- Collection Catch Basins
- Grease Interceptors
- Interior & Exterior
- Gravity & Automatic
- Rectangular & Cylindrical
- Solids Removal
- Rainwater Harvesting
- Greywater Reuse
- Potable Water
- Fire Protection
- Stormwater Management
- Chlorine Contact
- Hydropneumatic
- Specialty Pressure Vessels

Contact: Michael VanLenten Jr
 mvanlentenjr@highlandtank.com
 Phone: 814-254-8896

Please visit us at www.highlandtank.com

Manufacturers Representative Since 1968

Harry Eklof

& Associates, Inc.

Representing:

 **CALEFFI**
Hydronic Solutions



 **FIELD CONTROLS**



 **FUJITSU AIRSTAGE**



 **Navien**



 **FLORESTONE**
A spec above.



SCAN THE QR-CODE

to get more information
on product and training!



Schedule of Events

SEPT 27	Communication Skills for Construction & Consulting	BJ Allen Warfel Construction
OCT 25	Vacuum System Design	Nikita Patel Sherman Engineering
NOV 16	Generator Basics	Jim Webster Kelly Generator & Equip.
DEC 13	Air Compressors	Will Dargan Cummins Wagner
JAN 24	Grease Interceptors	Schier Products
FEB 28	Fire Protection Specialties	Ken Isman University of Maryland
MAR 27	Fire Protection- Pre-Action Systems and Clean Agents	Josh Shapiro Reliable Sprinkler Co
APR 24	Siphonic Roof Drains	UV Systems
APR 2024	Annual Golf Tournament	Details to Follow
MAY 22	Natural Gas Sizing	Chuck Swope Mueller Associates ASPE Baltimore President
JUN TBD	Annual Summer Party	Details to Follow

MONTHLY
SPONSORSHIP
OPPORTUNITIES

Tabletop Presentations: \$100 to provide a tabletop presentation of equipment or material relative to the plumbing profession. The tabletops will be set up from the beginning to the end of the monthly meeting and provides the opportunity to provide a brief (under 5 minutes) presentation.

Please make checks payable to the Baltimore Chapter of ASPE. Contact Kathy Dwyer or Chuck Swope if interested