



IN THIS ISSUE



Board of Directors	Page 2
President's Report	Page 3
VP Technical Report	Page 6
Tech Corner	Page 9
VP Membership Report	Page 12
Plumbing Plans Corner	Page 13
VP Legislative Report	Page 16

MEETING FORMAT

6:00 – 6:30	Social
6:30 – 6:45	Announcements & Table Tops
6:45	Dinner Served
7:00 – 8:00	Presentation

DATE:	February 26, 2025
TIME:	6:00pm to 8:00pm
PLACE:	Olive Grove Restaurant
TOPIC:	Fire Suppression Specialties
SPEAKER:	Viking

[Register Today](#)

ASPE '24 Chapter Award of Merit
2023 – 2024 Recipient

ASPE
TechSymposium2025
September 24–28 // Orlando, FL

ASPE Baltimore Board of Directors



Vice President- Technical & ASPE Young Professionals' Liaison

Julian Chiveral, LEED AP BD+C
vpotech@baltimoreaspe.com



VP- Affiliate, Scholarship & Historian

Jason J. Eagles
Bay Associates Group
Jason@bayassociates.com



Vice President- Membership

Nicole Murphy
Harry Eklof & Associates
nmurphy@harryeklof.com



Women of ASPE- Liaison

Karen Schulte, PE, CPD
Mueller Associates
KSchulte@muellerassoc.com



Chapter Ambassador

Jay Otto
Otto Sales
JayOtto@ottosales.com



President

Charles J. Swope, PE, CPD, LEED AP B+C
Mueller Associates
president@baltimoreaspe.com



Vice President- Legislative

Christopher Imhof, PE, CPD
WSSC
Christopher.Imhof@wsscwater.com



Treasurer

Kathleen Dwyer-Stephens
EJ Dwyer Company, Inc.
KDwyer@ejdwyer.com



Education Chair

Nikita Patel, PE
Sherman Engineering Company
npatel@shermanengineering.com



Corresponding Secretary

Matt Obenchain, PE
Min Engineering, Inc.
Matt.Obenchain@minengineering.com



Chapter Ambassador

Brian Crisp, CPD
Johnson, Mirmiran & Thompson
BCrisp@jmt.com

Newsletter Advertising

- As a paid advertiser, you will have your advertisement in the newsletter for one full year (9 editions) and company logo displayed on the Chapter website.
- Ads for the year will begin in the September issue and run through the May issue.
- All ads must be paid in full prior to the advertisement being included in the newsletter.
- Advertiser must provide ads in high resolution PDF format. Logo must be provided in .jpeg format, 200px wide size
- Cost per advertisement is as follows:
 - Full Page \$ 750.00
 - Half Page \$ 500.00
- Please contact Nikita Patel or Chuck Swope
- Make checks payable to Baltimore Chapter of ASPE. Please contact the Chapter Treasurer with any questions.



Chuck Swope, PE, CPD, LEED AP BD+C
Chapter President

February has a special place in the Baltimore Chapter's heart. We celebrate this cold month with our hottest topic, Fire Protection! Knowing myself, I've probably made this pun every year, but its so good! Please take a look at Julian's article for great details, but a little birdie told me that this one is a great topic for projects where asset protection is a big concern.

February also marks the celebration of National Engineers Week! Since 2018, Baltimore ASPE has proudly participated in this program, hosted at The Engineering Society of Baltimore's historic Garrett-Jacobs Mansion in Mt. Vernon. This incredible venue sets the stage for an engaging event where we introduce local high school students to the world of engineering through a brief presentation and a hands-on mini Engineering Fair.

The goal of this event is to give students a glimpse into various engineering disciplines, including Architectural, Mechanical, and Plumbing Engineering. Our presentation covers the different branches of engineering, a brief history of ASPE and Plumbing Engineering, and an overview of what it means to be an engineer. And let's be honest—nothing grabs their attention quite like the salary discussion!

The Engineering Fair features interactive booths where students can explore fascinating products and connect with professionals in the field. I personally enjoy running the Consultant Engineer's booth, where I share insights about my daily responsibilities, the projects I work on, and what makes my career rewarding. We're excited to inspire the next generation of engineers, and we hope you'll be cheering us on as we continue to grow this event!

Speaking of education, we are proud to announce that the nationwide acclaimed CPD study will be hosted by EJ Dwyer and presented by David Bailey, a recognized ASPE Fellow. This meeting will be both in-person and presented virtually simultaneously. I encourage you to attend in person, as your attention is greatly awarded. This event is sponsored by the EJ Dwyer Co, Baltimore ASPE, and DC ASPE and welcomes all chapter members. As an added bonus, the Baltimore Chapter will sponsor the CPD guide for any first-time Baltimore Chapter Attendee! Please see the flyer located within the newsletter for more information and contact details.

In Person & Virtual CPD Review Session 2025

The Washington DC and Baltimore ASPE Chapters are proud to sponsor a free, simultaneous in-person and virtual log-in CPD review session at the E.J. Dwyer Co. Conference & Training Center at 10910 Pump House Rd, Annapolis Junction, MD 20701. A TEAMS meeting link will be provided by the Friday before the event for the virtual log-in participants.

The review session will be on three consecutive Saturdays in March: March 1st, March 8th, and March 15th. Each of the sessions will commence from 9:30 AM through 3:30 PM (EST) with a 45-minute lunch break during the noon hour.

If you are interested in participating whether in-person or by virtual means, then please register via e-mail no later than the afternoon of Wednesday, February 28th to either Ned Dwyer ndwyer@ejdwyer.com or Kathy Dwyer kdwyer@ejdwyer.com at the following respective addresses: ; and CC yours truly at David.Bailey@wssewater.com. Also, please indicate whether you will be attending in-person or by virtual means.

Please have on hand the latest edition of the CPD Study Guide, a highlighter, a calculator, pencil and paper. A limited number of study guides and seating will be made available at E.J. Dwyer Co. for in-person attendees. The CPD Study Guide may also be purchased on-line from the ASPE Bookstore website: <https://www.aspe.org/product/cpd-study-guide-2020/>.

ASPE ALERT: Deadline to register is April 1, 2025; 2024 CPD Exam Dates: April 7-18.

Respectfully,

David Bailey

David M. Bailey, CPD, GPD, FASPE

DATE: March 1st, March 8th, and March 15th from 9:30 AM to 3:30 PM (EST)
LOCATION: E.J. Dwyer Co. 10910 Pump House Road, Annapolis Junction, MD 20701
CONTACT: Ned Dwyer – ndwyer@ejdwyer.com – Mobile: 443-250-4275
Kathy Dwyer – kdwyer@ejdwyer.com – Mobile: 443-250-0285

Dwyer Directions by Drone: <https://vimeo.com/ejdwyercompany/directionsbydrone>

Dwyer Directions by Google: <https://tinyurl.com/2kvh6xpm>

Ultra-reliable Electric and Gas-Fired Water Heaters



Industry's Best Warranties

AquaPLEX®
Engineered Duplex Alloy



Aegis® Eco-Friendly CO₂ Heat Pump Water Heaters



The Cleaner Way to Heat

 **Lync**®
by **WATTS**

17.335.9531 | lyncbywatts.com/aegis



1432 Front Ave | Lutherville, MD 21093
410-825-6616 | bayassociates.com | Jason@Bayassociates.com



Julian Chiveral, PE LEED AP BD+C
Vice President- Technical

Things are heating up this month – just not hot enough to set off the fire suppression system! Join us on February 26th as we return to the welcoming ambiance of Olive Grove in Linthicum. I'm excited to kick off this month's meeting with a technical deep-dive into fire protection specialties—specifically, the realm of clean agents.

Before we look forward, I want to extend our sincere thanks to everyone who attended the January joint meeting with the local union and everyone whose contributions helped to make it a success!

In keeping with our February Fire Protection tradition, I'm excited to announce that Bryan Berkley from Viking Corp will lead our technical presentation on Fire Suppression Specialties. Bryan's presentation promises to be both informative and engaging as he introduces us to the world of UL/FM inert gas systems and the benefits of residue-free fire extinguishing solutions.

- Inert Gas Systems vs. Other Agents: Learn about the distinguishing characteristics of inert gas systems compared to traditional water-based or synthetic clean agents.
- System Hardware and Gases: A detailed look at the components that make up these advanced fire suppression systems, including the variety of gases used.
- Environmental Impact: Explore how inert gas systems offer environmentally friendly solutions without leaving behind harmful residues.
- Versatile Applications: Delve into the practical applications for addressing Class A, B, C, and D fires, ensuring comprehensive protection strategies for various scenarios.

We look forward to an engaging session filled with technical expertise, spirited discussions, and the camaraderie that makes our community so special.

Here's a quick look at the rest of the year:

February 26	Fire Suppression Specialties: Clean Agents Bryan Berkley, Viking Corp	Olive Grove, Linthicum
March 26	Heat Pump Water Heaters Bay Associates	Olive Grove, Linthicum
April 23	Everything We Do Wrong as Plumbing Engineers featuring Joe Niedzielski	Little Havana, Locust Point
May 21	Backflow Prevention Sean Perry, MIFAB	Little Havana, Locust Point

Stay warm and see you at the meeting!
Julian, VP-T



ASPE BALTIMORE CHAPTER GOLF OUTING and COOKOUT

**Friday, April 25, 2025
The Timbers at Troy
Columbia, Maryland
\$125 / Golfer**

- Prizes for Team Play
- Door Prizes
- Longest Drive Prizes
- Closest to the Pin Prizes

SCHEDULE

7:30 AM Registration/Check-In/Breakfast

8:30 AM Shotgun Start
Scramble Format
"Captain's Choice"
Mulligans Available

1:30 PM Cookout (Hamburgers,
Hot Dogs, etc.)

2:00 PM Awards & Prizes

**Sponsors and Participants,
please return registration and sponsorship
forms to:**

David K. Goodell
dgoodell@jamesposey.com

**Sponsors and Participants,
please return PAYMENT to:**

Kathy Dwyer
kdwyer@ejdwyer.com

PAYMENT IS PREFERRED VIA THE WEBSITE:

<https://baltimoreaspe.com>

Reservations will be confirmed when payment and participant information is received.

PLEASE RETURN COMPLETED FORMS BY APRIL 11, 2025.

Company _____

Name _____ Phone No. _____

No. of Golfers _____ @ \$125 each Total for Golfers: \$ _____

Sponsorship Level: Total Sponsorship: \$ _____

Total Amount: \$ _____

2025 ASPE Baltimore Chapter Golf Outing Sponsorship Levels

- **Tee Marker (with Foursome)** **\$150.00**
- **Tee Marker (without Foursome)** **\$200.00**
- **Drink Cart Sponsorship** **\$750.00**
(Includes tee marker and drink cart sign)
- **Cookout Sponsorship** **\$750.00**
(Includes tee marker and drink cookout sign)
- **Cart Sponsorship** **\$750.00**
(Includes tee marker and cart signs for each cart)



Leveraging Social Media for Plumbing Professionals

July 1, 2024

Social media offers engineers, contractors and independent manufacturer representative firms a significant opportunity to connect with their audience, showcase their expertise and establish a robust online presence. Despite the potential, many smaller firms find allocating resources for marketing and social media activities challenging, often lacking a dedicated team member to manage these tasks.

The primary goal of social media engagement for plumbing professionals is to interact with potential clients and partners, increasing awareness and visibility for their firms. By effectively using social media, firms can publicize their achievements, enhance company awareness and connect with key industry decision-makers.

The Value of Time Spent Online

Neil Patel, a renowned New York Times bestselling author and SEO and branding expert, notes that the average user spends 95 minutes daily on short-form content. With a significant portion of Internet users' time spent on social media, plumbing firms have ample opportunities to reach potential customers. Although social media may not directly generate profits, it plays a crucial role in building brand awareness, establishing thought leadership and generating leads, indirectly supporting sales efforts.

Chris Eyrich, CPMR, from Vernon Bitzer Associates and a representative for CircuitSolver thermostatic balancing valves, highlights the effectiveness of social media in promoting his firm's activities and achievements, particularly on LinkedIn, which he finds instrumental in reaching both existing and prospective clients.

"Social media is an excellent way for me to communicate our capabilities as a manufacturers' representative; we promote our activities and share posts regarding new products, case studies, training, tech tips, contests, etc., on behalf of our manufacturing partners," he says. "I feel this helps tremendously with brand recognition and gaining trust.

My main social media platform for business is LinkedIn; I find this beneficial in reaching existing and potential clients and business partners. CircuitSolver provides creative and current content I regularly share to spread the word to my friends, future clients and partners."

Emphasizing LinkedIn

This guide focuses on LinkedIn, acknowledging its unique position among social media platforms for professional networking.

"As of 2023, 59 million companies worldwide have a LinkedIn page, with a very relevant 40% to 48% of visitors regularly engaging with the platform," explains Audra Hammer Ross, senior branding specialist at LinkedIn-Makeover.com. "As someone who has spent more than a decade helping professionals shine on LinkedIn, I encourage business owners to complete their LinkedIn profile and company page fully.

"It's not about vanity — it's about building trust, credibility and establishing a presence to collide with the opportunity for brand awareness that already exists on LinkedIn."

Many small businesses struggle with the chores of LinkedIn or underestimate its value in elevating and enhancing their brand's perception. However, by fully embracing this platform's potential, you can transform your LinkedIn presence into an asset that sets you apart in the industry.

The Debate on AI-Generated Content

Though AI can simplify content creation, human-written content typically offers superior quality and engagement. Patel suggests that human-generated content is more effective than AI-written content in most cases. If AI is used, it's crucial to tailor the content to reflect the firm's unique voice and audience preferences. A good tip is to ask an AI program to rewrite your content with a specific tone: professional, formal, informal or for social media, among others. Comparing two versions of your content can equal a focused social media post or a more informative blog post.

Getting Started with LinkedIn

Plumbing professionals should begin by creating or updating their LinkedIn profile with a clear, professional image and comprehensive details about their business, including services, products and any notable achievements. Regular engagement, such as following partners and industry organizations, posting about company news, and sharing insights or completed projects, can significantly enhance a firm's visibility and reputation.

Content should be carefully considered to address the audience's needs and showcase the firm's solutions to industry challenges. Regular posting and professional and engaging content can transform LinkedIn into a valuable asset for any plumbing business.

Key Considerations and Best Practices

- Engage with partners, clients and industry organizations by following their profiles and interacting with their content.
- Post regularly about your firm's achievements, products and services, ensuring content is relevant and engaging to your target audience.
- Use appropriate hashtags to increase visibility and connect with a broader audience, such as #valves, #plumbingsolutions, #plumbinglife, #construction, #engineers, #contractors and #plumbingservices.
- posts.

Remember:

- Do tell the story of your company, products, services, employees and projects professionally.
- Do keep your posts brief and to the point, with a picture to strengthen your story.
- Don't share personal or company information meant for employees only.
- Do like and follow your customers' and clients' profiles.
- Do engage with people when they comment on your posts.
- Do continue to post on a schedule that works for you.

By adhering to these guidelines and actively participating in social media, plumbing professionals can effectively communicate their value proposition, engage with their target audience and achieve greater visibility in the competitive market.

Christine Tarlecki works in marketing at ThermOmegaTech. She has more than 24 years of professional writing experience, more than five years as a professional writer in the manufacturing, plumbing and HVAC industries, and more than 10 years in social media marketing.

Tepid Water Solutions



THE RIGHT TEMPERATURE. AT THE RIGHT TIME.

Bradley's tepid water solutions are designed to create a safe tepid temperature, a necessary addition to your safety planning. The current ANSI standard calls for emergency eyewash and drench showers to deliver tepid water for 15 minutes. This assures that a user would not be subjected to very cold water and possible hypothermia or very hot scalding water and possible skin burns.

Tepid Water Solutions. Brought to Life.

For more information please contact:
Kathleen Dwyer | E.J. Dwyer Co.
Quality Representation for 40+ Years
Mobile: 443-250-0285
Office: 240-553-0112



A WATTS Brand

TEMPERATURE MIXING VALVES | TANKLESS WATER HEATERS | TEPID WATER SYSTEMS



Nicole Murphy
VP Membership

Hello everyone! I hope you have all navigated the recent snow safely.

We are thrilled to announce the addition of our newest members to the Baltimore Chapter:

- Kenneth Bernard
- Victor Ley
- Sepideh McQuay

With 141 members now on our roster, the Baltimore Chapter is growing stronger! Joining ASPE not only connects you with professionals who share your interests but also opens the door to numerous benefits, including our engaging monthly meetings. If you haven't registered yet, now is a fantastic time to take advantage of what membership offers. We encourage all members to extend invitations to their colleagues to join us at our events. Together, we can foster a vibrant community!

For more information on membership and to stay updated on our exciting upcoming events, please visit <https://aspe.org/join>. I look forward to seeing everyone on February 26th at the Olive Grove!

Best regards,
Nicole Murphy, Harry Eklof & Associates
nmurphy@harryeklof.com • 443-926-6821
VP Membership



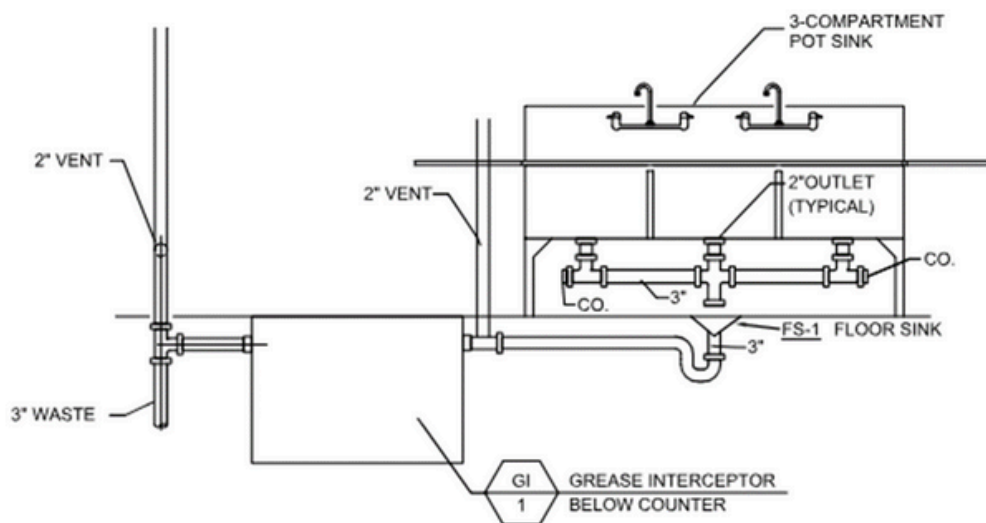
David Bailey
 Plumbing Plans Reviewer's Corner

Happy Ground Hog's Day everyone and it's time to review the items from the last newsletter article. There were five items, the first one involved two public bathroom groups and an EWC displayed per floor plan and DWV riser diagram. One problem involves the introduction of the EWC waste piping among the bathroom groups whose wet-vent systems were not independent of one another. A wet-vent system is limited to bathroom fixtures only. The other problem involves the wet venting themselves that were undersized at 1½" due to the 4" water closet wastes.

The second item was the EWC specified was simply a bottle filler. WSSC Water does allow a water dispenser as a substitute for an EWC, but the Owner is required to provide either refill bottles, disposable cups, etc. Also, if there are disposables, then provisions for disposal are required for such items and need to be indicated within the drawing set.

The third item concerns the public lavatory faucet flow rate at 1.0 GPM. The maximum allowed per Code is 0.5 GPM. The fourth item involves the 20-gallon water heater. Although not a Code issue, the specified model is single element, not a double element unit. The last item involves the water heater detail with a check valve on the outlet of the HW piping positioned opposite the direction of flow. It appears it should have been located on the CW inlet after the thermal expansion branch tee.

This month's review involves grease abatement for a kitchen area. A waiver came into the office to have the mop basin deleted from the grease abatement system. This prompted me to glance at the approved drawings. A Schier GB-3 grease trap was specified for receiving grease waste for a 3" drain mop basin and a three-compartment sink. A copy of a detail of the three-compartment sink detail is provided below. What are the concerns with this proposed grease abatement system?



3 COMPARTMENT INDIRECT SINK AND BELOW GREASE INTERCEPTOR DETAIL

Manufacturers Representative Since 1968

Harry Eklof

Representing :: & Associates, Inc.

CALEFFI
Hydronic Solutions



FIELD CONTROLS



FLORESTONE
A spec above.



SCAN THE QR-CODE

to get more information
on product and training!



ARE YOU RESPONSIBLE FOR DESIGNING COMPRESSED GAS AND VACUUM SYSTEMS?



SINCE 1920, SHERMAN ENGINEERING

has been offering the optimum engineered vacuum and compressed gas systems in the Healthcare, Pharmaceutical, Chemical, Power, and General Industrial markets.

OFFERING 24/7 EMERGENCY SERVICE

our factory trained and ASSE 6000 credentialed service technicians are available to manage preventative maintenance and emergency outages.



QUESTIONS? CONTACT

Nikita Patel, PE
570-899-9090

npatel@shermanengineering.com
1830 County Line Rd, Unit 303
Huntingdon Valley, PA 19006

01

Vacuum Pumps

Liquid Ring, Dry Rotary Vane, Dry Rotary Claw, Lubricated Rotary Screw, Lubricated Rotary Claw, Lubricated Rotary Vane, Ejectors

02

Compressors

Oil Less Scroll, Oil Free Rotary Screw, Oil Free Rotary Claw, Oil Flooded Rotary Screw, Oil Flooded Reciprocating, Dryers, Drains, Purifiers, Filtration, Lubricants

03

Medical Gases

ASSE 6060 Design Support, Medical Vacuum, Medical Air, Compressed Gas Manifolds, Medical Gas Outlets, Ceiling Columns, Pedestals, Alarm Panels, Zone Valve Boxes, Gas Monitors

04

Field Services

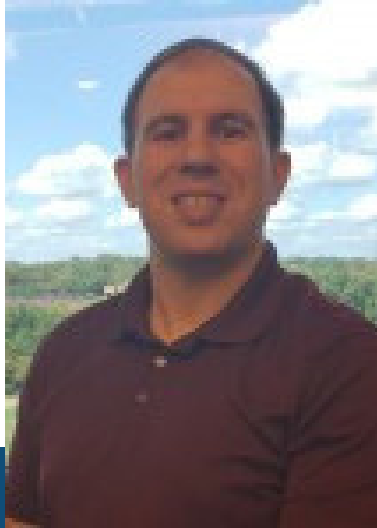
Medical Gas Verification, 24/7 Field Service Technicians, Installation Assistance, Job Walks, Sizing & Selection, ASSE 6000 Training

05

Engineering Services

Custom solutions for compressed gases and vacuum. Medical gas design sizing and pipe layout. Support within healthcare, pharmaceutical, chemical, power, and general industrial market segments.





CHRISTOPHER IMHOF, PE, CPD
 Technical Standards
 Engineering Manager
 Regulatory Services Division

Office: 301.206.8514
 Cell: 540.230.4664
 christopher.imhof@wsscwater.com

14501 Sweitzer Lane
 Laurel, MD 20707
 wsscwater.com

CASPE
 American Society of
 Plumbing Engineers™

B A L T I M O R E

Chris Imhof, PE, CPD
 Vice President- Legislative

2025 Legislative Session is Open!

The 2025 Legislative Session opened on January 8th. The following is a list of bills that relate to plumbing, gasfitting, utilities, climate action, water quality, licensure, land use and development

Bills of particular interest in plumbing are highlighted in yellow.

Bill Number		Title	Synopsis
Senate	House		
SB0042		Environment - Interjurisdictional Watersheds - Flood Management	Requiring the Department of the Environment to designate the watersheds of Carroll Creek in Frederick City and Frederick County, Gwynns Falls and Jones Falls in Baltimore City and Baltimore County, and Herring Run, including the Herring Run Stream in Baltimore City and Baltimore County and all their headwaters and tributaries as interjurisdictional flood hazard watersheds.
SB0096	HB0277	Environment - Water Bottle Filling Stations - Requirement	Requiring a water bottle filling station or a combined water bottle filling station and drinking fountain to be installed in certain new construction or as part of certain renovations beginning October 1, 2025; and requiring the Maryland Department of Labor to adopt regulations to carry out the provisions of the Act.
SB0116	HB0270	Data Center Impact Analysis and Report	Requiring the Department of the Environment, the Maryland Energy Administration, and the University of Maryland School of Business, in coordination with the Department of Legislative Services, to conduct an analysis of the likely environmental, energy, and economic impacts of data center development in the State; and requiring the Department of Legislative Services to coordinate preparation of the final report to be submitted to the Governor and the General Assembly by September 1, 2026.

SB0117	HB0131	Environment - Bay Restoration Fund - Septic System Upgrade Program	Authorizing the Department of the Environment to establish performance-based funding levels for best available nitrogen removal technologies for on-site sewage disposal systems using a certain evaluation and ranking process; requiring the Department to make certain eligible funding levels available on its website; altering priorities for funding the repair or replacement of certain on-site sewage disposal systems by identifying failing systems located within the watershed of a nitrogen-impaired body of water; etc.
SB0175	HB0222	Public Safety - Corrugated Stainless Steel Tubing for Fuel Gas Piping Systems - Requirements and Prohibitions	Prohibiting the sale, offer for sale, transfer, or distribution of corrugated stainless steel tubing that does not meet a certain International Code Council standard or is not proven to withstand a certain electrical arcing charge; requiring certain tubing used in the construction of fuel gas piping systems in certain buildings to meet a certain International Code Council standard or be proven to withstand a certain electrical arcing charge; and providing a civil penalty of up to \$1,000 for a violation of the Act.
SB0253	HB0062	Controlled Hazardous Substance Facility Permit - Research Facilities - Chemical Warfare Material Requirements	Providing that certain provisions of law regarding chemical warfare material requirements under a controlled hazardous substance facility permit do not apply to the incineration of chemical warfare materials at a certain research facility if the incineration is done for research, development, or demonstration purposes.
SB0256	HB0049	Environment - Building Energy Performance Standards - Compliance and Reporting	Altering an annual compliance fee paid by certain owners of covered buildings under certain circumstances to include the energy use attributable to the building's failure to meet certain energy targets; requiring certain regulations to include a certain annual reporting fee to cover certain costs; and requiring the Department of the Environment to deposit alternative compliance fees into the Maryland Strategic Energy Investment Fund.
SB0263	HB0092	Heating, Ventilation, Air-Conditioning, and Refrigeration Contractors - License Restoration	Extending from 90 days to 4 years the time period during which an individual who has held a heating, ventilation, air-conditioning, and refrigeration contractor license may apply for license restoration after expiration.
SB0345	HB0386	Pesticides - PFAS Chemicals - Prohibitions	Requiring, by January 1, 2026, the Department of Agriculture to develop and maintain a list of certain registered pesticides that list PFAS chemicals as an active ingredient on the labeling accompanying the pesticide; prohibiting, beginning June 1, 2026, a person from using, for certain purposes, PFAS pesticides listed by the Department; prohibiting, beginning June 1, 2028, a person from using PFAS pesticides in the State; etc.

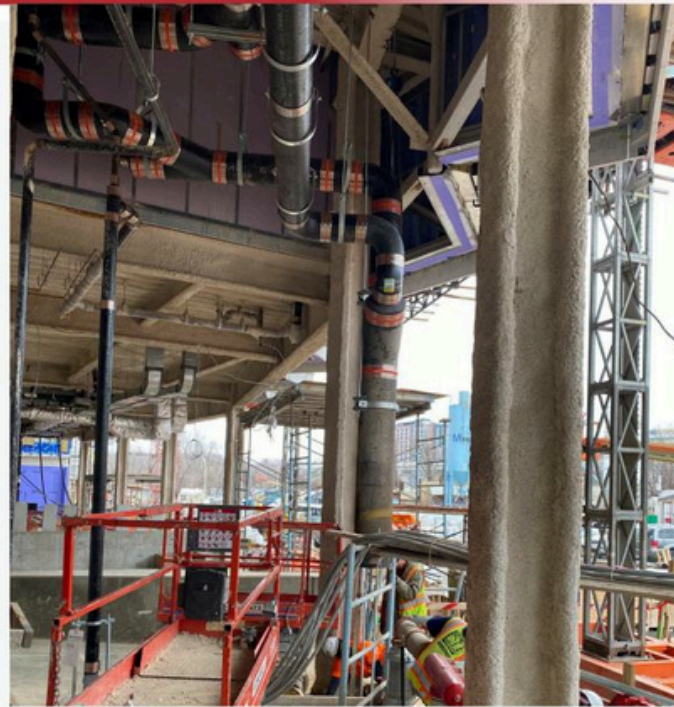
SB0431	HB0501	Registered Apprenticeship Investments for a Stronger Economy (RAISE) Act	Authorizing the State Board of Plumbing to waive the license examination requirement for a journey plumber license; authorizing the Secretary of Labor to waive the examination for certain licenses; altering the duties of the Maryland Apprenticeship and Training Council; repealing the Youth Apprenticeship Advisory Committee; establishing the Maryland Office of Registered Apprenticeship Development to market and advance the registered apprenticeship system throughout the State; etc.
	HB0024	Bay Restoration Fund - Authorized Uses - Connection to Existing Municipal Wastewater Facility	Altering the authorized uses of a certain account of the Bay Restoration Fund to include the cost of connecting certain property using an on-site sewage disposal system to an existing municipal wastewater facility under certain circumstances.
	HB0212	Maryland Building Performance Standards - Fossil Fuel Use and Electric-Ready Standards	Requiring the Maryland Department of Labor to adopt, on or before January 1, 2026, and as part of the Maryland Building Performance Standards, a requirement that new buildings meet all energy demands of the building without the use of fossil fuels and an electric-ready standard for certain buildings.
	HB0671	Environment - On-Site Sewage Disposal Systems - Climate Vulnerable Areas	Requiring, by January 1, 2026, a county water and sewerage plan to include a plan to minimize inundation risks to existing on-site sewage disposal systems and limit the installation of new on-site sewage disposal systems in climate vulnerable areas; prohibiting the installation of an on-site sewage disposal system in a climate vulnerable area to service a newly constructed building, and prohibiting the replacement of an on-site sewage disposal system in a climate vulnerable area, unless certain conditions are met; etc.
	HB0747	Environment - On-Site Wastewater Systems - Requirements for Inspection and Pumping Services	Requiring a landlord of property that is served by an on-site wastewater system to ensure, on or before January 1, 2026, and before each new tenant occupies the property thereafter, that the system has been inspected and pumped out in a certain manner; and requiring a contract for the sale of real property that is served by an on-site wastewater system, beginning on January 1, 2026, to require that the purchaser has ensured that the system has been inspected and pumped out in a certain manner.

	HB0973	Maryland Building Performance Standards - Fossil Fuel Use, Energy Conservation, and Electric- and Solar-Ready Standards (Better Buildings Act of 2025)	Requiring the Maryland Department of Labor to adopt, by October 1, 2025, and as part of the Maryland Building Performance Standards, energy conservation requirements, an electric- and solar-ready standard for certain buildings, and a requirement that new buildings and significant improvements meet all laundry, water, and space heating demands of the building without the use of fossil fuels.
SB0479		Building Energy Performance Standards - Public Safety, Emergency, and Public Utility Buildings - Exclusion	Altering the definition of "covered building" for purposes of certain building energy performance standards to exclude certain public safety, emergency, and public utility buildings.
SB0529		Business Occupations and Professions - Professional Engineers - Examination	Requiring an applicant for a license to practice engineering to pass an examination in the fundamentals of engineering given by the State Board for Professional Engineers before passing the required examination in the principles and practice of engineering.
SB0779		Climate Solutions Now Act Affordability Act of 2025	Specifying that certain requirements under the Climate Solutions Now Act of 2022 are to be carried out to the extent economically practicable, including requirements concerning achieving certain direct greenhouse gas emissions reductions from certain buildings, measuring and reporting direct emissions data to the Department of the Environment, achieving certain greenhouse gas emissions reduction goals, and achieving zero-emission vehicle goals relating to the State vehicle fleet and local school buses; etc.

You can follow these bills at www.mgaleg.com by reading next month's newsletter.

Chris Imhof, PE, CPD
Vice President – Legislative

SUPPORT FOR ASPE BALTIMORE



Mueller Associates practices and promotes the link between good quality plumbing, health, environmental sustainability, and economic prosperity.



Mueller

Mueller Associates
1306 Concourse Drive, Suite 100
Linthicum, MD 21090
www.muellerassoc.com
410.646.4500

ENGINEERING GREAT EXPERIENCES



TO LEARN MORE CONTACT
Jason Eagles: Bay Associates
JASON@BAYASSOCIATES.COM

OMNI
PBX

A fully integrated, energy efficient heat pump water heater. Available in 50, 65, 80 & 119 gallon capacities.



Air or water source heat pump

Fully configurable heat pump system with 120-5000 gallon storage capacity and fully programmable controller



PLC Controller



Recirc/backup heater



Cement lined storage tank

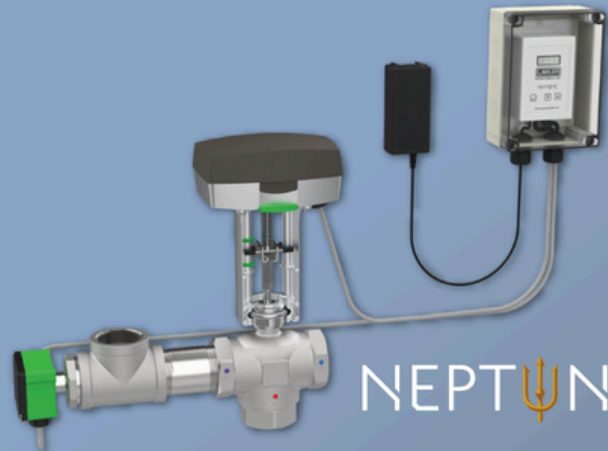
OMNI
HHP



Experience Ease of Installation, Integration, and Control with Lawler's Fully Electronic Mixing Valve, Neptune!

Neptune EMX Electronic Mixing Valve

- Accurate control of domestic hot water in all flow conditions
- Simple 3 button interface
- High temperature alarm
- Two valve installation in parallel with one controller
- ModBus and BACnet™ communication standard
- Rugged lead-free stainless-steel valves
- ASSE 1017 and NSF 372 listed



NEPTUNE

Neptune EMX Electronic Mixing Valve Manifold Systems for Recirculation

- Plug-and-play
- Pre-assembled / tested
- Standard and custom designs

Contact your local rep **Jason Eagles** at **Bay Associates Group (Jason@Bayassociates.com)** or visit www.temperedwater.com to learn more.





PLUMBING GROUP



Superior Performance & System Reliability

DuRa Pipe™ enhanced epoxy coating applied to cast iron soil pipe and fittings. It is well suited for aggressive DWV applications where greater performance is required.



ABIFoundry.com



Anaco-Husky.com



PIPE & COUPLING

TylerPipe.com



SCAN TO CONTACT
TECH TEAM



2022
MPB USA
CATALOG
SPECIFICATION DRAINAGE
PRODUCTS
LIT-067



2022
CLPB CATALOG
LIGHT COMMERCIAL
DRAINAGE PRODUCTS
LIT-048



2022
ACCESS DOORS
CATALOG
ACCESS DOORS
UNIVERSAL - DRYWALL - FIRE RATED
LIT-043



2022
BACKFLOW
CATALOG
BACKFLOW PREVENTERS
AND ACCESSORIES
LIT-071



2022-06
COUPLINGS
CATALOG
NO HUB COUPLINGS
BLACK HUB - HEAVY DUTY - FLEXIBLE
LIT-044



2023
POLYMER CONCRETE
TRENCH DRAINS
CATALOG
4", 6", 8", 10" INTERNAL WIDTHS - SHALLOW CHANNELS - CATCH BASINS
(8", 10" and 12" OVERALL WIDTHS)
LIT-076



2023
GRP & STEEL
TRENCH DRAIN
SYSTEMS
CATALOG
GRP & STEEL TRENCH
DRAIN PRODUCTS
4", 6", 8", 10" INTERNAL WIDTHS - SHALLOW CHANNELS - CATCH BASINS
(8", 10" and 12" OVERALL WIDTHS)
LIT-046



2023
SHOWER DRAIN
CATALOG
STAINLESS STEEL
SHOWER DRAINS
LIT-077



2023
STAINLESS STEEL
TRENCH DRAINS
CATALOG
TRENCH, FLOOR AND
KETTLE DRAINS, CLEANOUTS
AND ACCESSORIES
LIT-072



2020
ROOFGUARD
CATALOG
"UNLOGGABLE"
ROOF DRAIN DOMES
LIT-058



2023
C-PORT RUBBER
SUPPORTS
CATALOG
ROOFTOP RUBBER
PIPE SUPPORTS
EXTENSION - WINGBODY - ROLLER
LIT-047



2022
DIALYSIS BOXES
CATALOG
DIALYSIS BOXES
LIT-070



2020
HYDROMAX
CATALOG
SIPHONIC ROOF
DRAINAGE SYSTEMS
PRIMARY - OVERFLOW - GUTTER
LIT-062



2023
INTERCEPTOR
CATALOG
HOLE INTERCEPTORS &
ACID NEUTRALIZATION
TANKS
LL-MAX - BG-MAX - SUPER-MAX
LIT-095



2022-08
TRAP SEAL
PRIMERS
CATALOG
TRAP SEAL PRIMERS
AND WATER HAMMER
ARRESTORS
PRESSURE DROP ACTIVATED - ELECTRONIC - FLOOR DRAIN SEAL
LIT-062



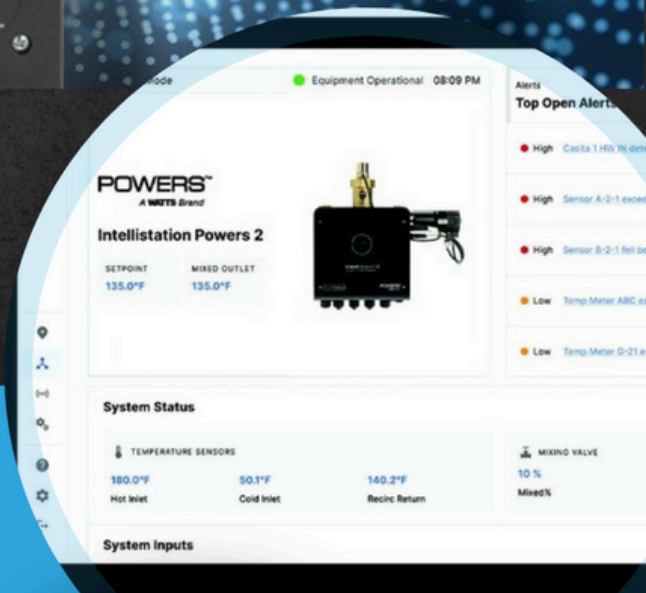


THE NEXT GENERATION OF DIGITAL MIXING

Temper Water. Not Expectations.

Key Features:

- Improved temperature control with Globe Valve Design
- Sensor package options to fit any application
- Improved touchscreen with screen swipes
- Full temperature monitoring and pressure/flow rate monitoring options



IntelliStation 2 performance data can be viewed from anywhere and tracked over time for trends that can help optimize your system and anticipate issues. This next generation mixing valve can be monitored and controlled remotely via Nexa or your BMS, and doesn't require factory preprogramming, a laptop, or special software when commissioning or making or adjustments.

works with nexa



nexaplatform.com

POWERS™
A WATTS Brand



The
JOYCE
AGENCY

Interested in learning more?
Contact Matt Morris of The Joyce Agency
410-903-9177 | mmorris@thejoyceagency.com

Come see the most disruptive break through pumping technology the industry has seen in decades!



***-Eliminates the wet well;
Maintenance
-No Odors***

-Reduce excavation/construction costs



AMES, Inc. is a manufacturer's representative of water and wastewater treatment, pumping, and HVAC equipment. We serve the municipal, commercial, and industrial markets in Delaware, Maryland, Northern Virginia, West Virginia, and District of Columbia.

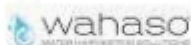
PRODUCT OFFERINGS:

- Overwatch Direct Inline Pumping System
- Pumps
- Controls
- Water & Wastewater
- Packaged Systems
- Rainwater & Water Reuse
- Grease/Interceptor

PARTS & SERVICES

- New Construction Field Service
- Warranty & Repair
- Maintenance Contracts
- Parts & Aftermarket Sales

PARTNERING WITH THE INDUSTRY'S PREMIER BRANDS



8918 Herman Drive | Columbia, MD 21045
www.amesinc.com | info@ames.com



**HOW CAN WE HELP?
410.995.8899**



WILLOUGHBY

COUNT ON US.



Family-owned and -operated since opening in 1947, Our fixtures and water management systems are Willoughby-tough and purpose-built for their environment! From sinks and lavatories to ligature-resistant plumbing fixtures for behavioral health facilities, we can help with fixtures for the most extreme environments.



7702 Old Alexandria Ferry Road
Clinton, MD 20735

www.tomweaverassociates.com

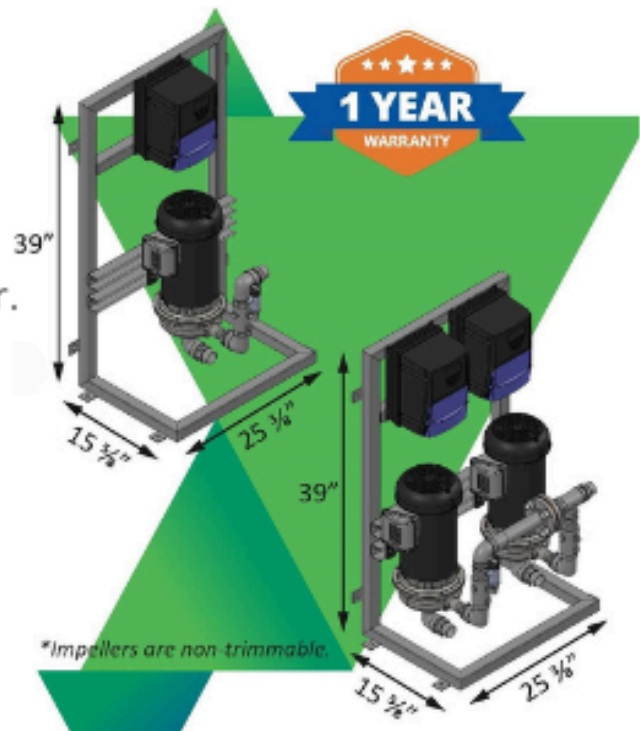
301.877.2300

When You Need a Micro Boost, Insist on a MicroFlo



MicroFlo Series Out of the Box High Efficiency Compact Booster.

The MicroFlo Series is a highly compact, 1 or 2 pump booster for LOW FLOW -- LOW BOOST applications. Buildings that are only a couple stories, have lower water movement needs, or small footprints. **The MicroFlo is designed specifically for these smaller appli-**



7702 Old Alexandria Ferry Road
Clinton, MD 20735

www.tomweaverassociates.com

301.877.2300



DURAGUARD® PRODUCT LINE



Public health and safety are a common concern. Targeted for commercial applications, Bemis has a comprehensive offering of seats with DuraGuard® Antimicrobial Built-In Seat Protection™ and STAY·TITE™.

WHAT IS DURAGUARD?

DuraGuard is an antimicrobial property built into the toilet seat to inhibit the growth of bacteria. The active ingredient in DuraGuard is zinc pyrithione, a non-VOC (volatile organic compound), broad-spectrum, highly effective antimicrobial agent used to control mold, mildew, yeasts, fungi, algae, gram positive and negative bacteria. DuraGuard does not protect users or others against bacteria, viruses, germs, or other disease-causing organisms.

WHAT IS STAY·TITE?

STAY·TITE Seat Fastening System™ anchors the toilet seat to the bowl by using a patented bolt design with a finned bushing and glass-filled nylon nut, eliminating the need to retighten the seat to the bowl after installation.

**CONTACT YOUR REP FOR
ADDITIONAL INFORMATION**

OFFICE



HOSPITALITY



SCHOOLS



HEALTHCARE



YOUR COMMERCIAL SPEC JUST GOT EASIER




ElectriFLEX
S E R I E S™

Specifiers know they can count on our **ElectriFLEX Series™** for a vast array of commercial solutions. It gives you the flexibility to meet every one of your customer's installation requirements.

- Features our exclusive Vitraglas® tank lining with Microban® antimicrobial technology
- Converts easily to the right voltage, phase, and kW input to meet your application demands
- Field-convertible at the supply house or in the field by a qualified installer using a conversion kit
- Light, Medium, and Heavy-Duty models available: a single model solves multiple installation requirements



Check out our Specifying
& Cross Reference Tools!


BRADFORD WHITE®
WATER HEATERS
Built to be the Best™



Barnard Associates
55 Aileron Court, Suites 1 & 2
Westminster, MD 21157
(P) 410-720-0900, (F) 410-720-0904

Canplas

Plastic Grease Traps, PVC DWV Fittings and Plumbing Specialties

Centoco Corp

Toilet Seats

Compass Manufacturing

Toilets and Stainless-Steel Sinks

Enfield

Acid Waste Piping, High Purity Piping

Guardian

Double Containment Piping Systems

Hammond Valves

Plumbing and Heating Valves

Ideal Tridon Couplings

No Hub, Heavy Duty and Specialty Couplings

Ipex

Schedule 40 & 80 PVC and CPVC Pipe

Milwaukee Valve

Domestic & Import Metal Ball, Butterfly, Check, Gate, Globe

High Performance Butterfly

NAC-NewAge Casting

Cast Iron and Epoxy Coated Pipe

SAS Safety Corporation

Protective Safety Equipment

Speakman Company

Hospitality Fixtures, Commercial Brass Emergency Equipment

Wolverine Brass

Plumbing Products for the Professional

Contact:

Office Phone: 410-720-0900

Office Fax: 410-720-0904



SHAFER, TROXELL & HOWE Inc.

Your Solutions Partner Since 1973



Representing:

Grundfos • Peerless •

PACO • Myers • Synicroflo •

Cougar Controls • Topp Industries •

Primex Controls • See Water



Applications and Service Specialization:

Sump/Sewage Pump Stations • Water Booster Systems •

Fire Pump System • Rainwater Harvesting Systems •

Circulating Pumps • Water Filtration Systems



Contact our Engineering Team

800•233•7718 | engineering@sthinc.com

97 - D Monocacy Blvd. • Frederick, MD 21701 • www.sthinc.com

THE PATHWAY TO DECARBONIZATION



DESIGNED ★ ENGINEERED ★ ASSEMBLED
USA

VERITUS®

Heat Pump Electric Water Heater
High Coefficient of Performance
Pairs with Thermal-Stor™ Heat Pump Storage Tank
Operates In Below Freezing Ambient Conditions of 23°F
Modular Design Concept
Low Global Warming Potential (GWP) Refrigerant (R513A)
Package Solutions Available
Features **SMARTTECH™** Operating Control

LECTRUS™

Resistance Electric Boiler
15 - 150 Kilowatts
Modulating Control
Cascade Up to 8 Boilers
ASME Rated Pressure Vessel
160 PSI Working Pressure
SMARTSYSTEM™ Control

 **Lochinvar**

CUMMINS-WAGNER

100% Employee Owned

Call 1-800-966-1277 Or Visit
Cummins-Wagner.com For Our Contact Information

Edge
HP IRON

CHARLOTTE
PIPE AND FOUNDRY COMPANY

A NEW LEVEL OF COATING
PERFORMANCE:
EDGE HP IRON™

SPECIALLY COATED CAST IRON
PIPE AND FITTINGS
FOR AGGRESSIVE DWV APPLICATIONS

charlottepipe.com/EdgeHPIron



A Thinner Shield is Better!

TRANSFERENCE OF TORQUE

Thicker gauge shield material blocks the torque from getting to the gasket. A thinner shield protects the gasket while allowing a more efficient transfer of torque therefore providing a better seal.

DEFLECTION

A thinner shield is more forgiving, flexible, and malleable. It bends with the joint allowing the seal to remain strong. A thick shield is rigid and does not form itself over the joint.

STEPPED JOINTS

The thinner shield allows the shield to conform over the stepped joint providing a more effective seal.



Interested in learning more? Contact Glenn Spilling, National Sales Manager
gspilling@idealtridon.com | 615-686-7826

Or visit us online at IdealTridon.com!



Viega, LLC - Mike McCarthy:

Technical Manager (571) 328-1143

mike.mccarthy@viega.us

Viega Questions? Lunch & Learn sessions, project support & specification review.



viega



Complete Mixing Valve Solutions



7702 Old Alexandria Ferry Road
Clinton, MD 20735

www.tomweaverassociates.com

(301) 877-2300

valve and piping solutions

don't just buy products, buy solutions

At Aalberts integrated piping systems, we create mission-critical products surrounding valve and connection technology.

Our group creates systems that are applicable for key verticals such as residential, commercial, industrial, and utility. These are designed and developed by our team of in-house engineers.

This complete piping and valve solution combined with our services are available through different channels.

verticals

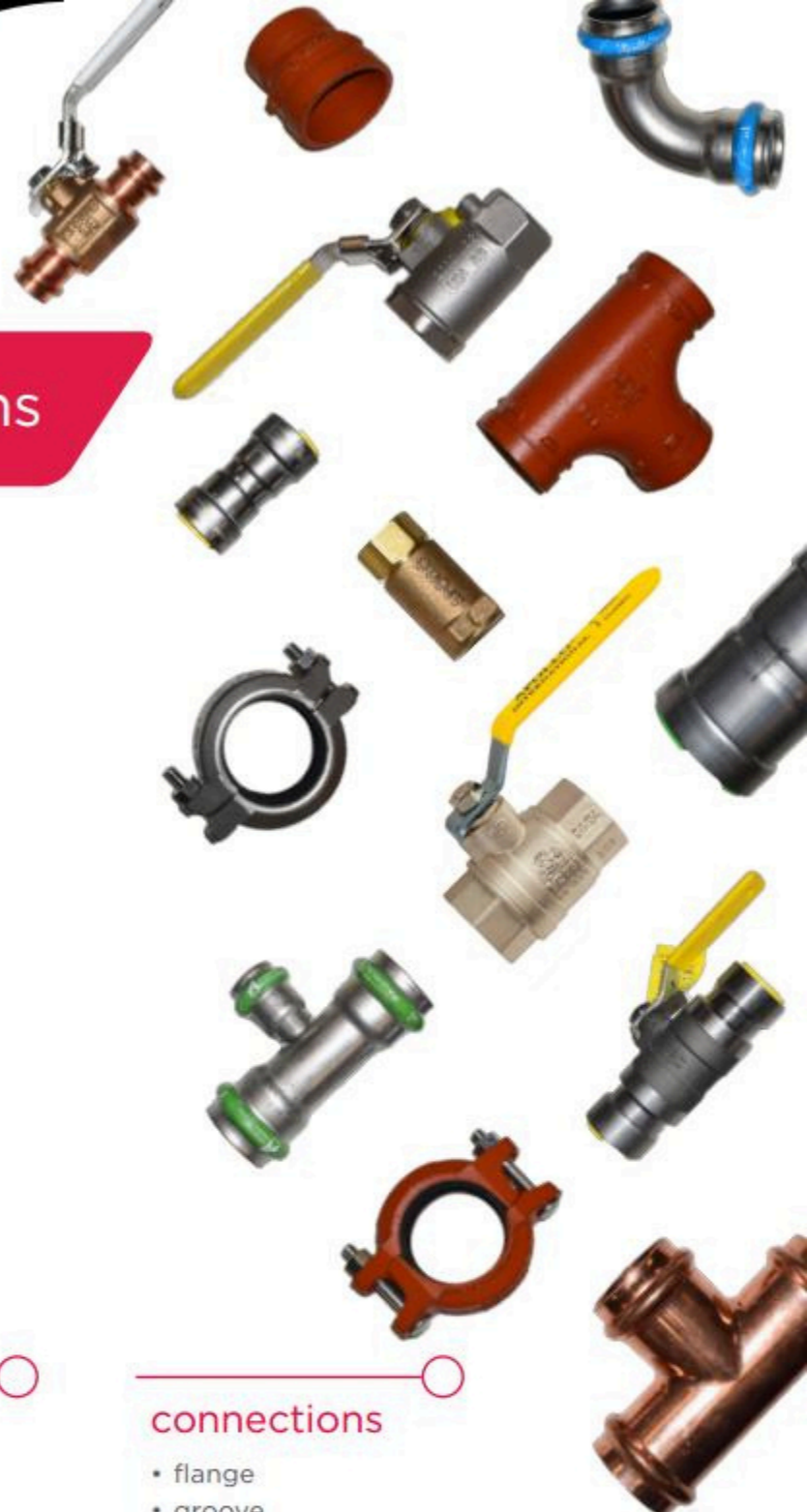
- battery
- chemical
- data centers
- education
- food and beverage
- hospitality
- oil & gas
- pharmaceutical
- power generation
- mixed-use
- water treatment

materials

- brass
- bronze
- carbon steel
- copper / steel
- ductile iron
- lead-free brass
- stainless steel

connections

- flange
- groove
- press
- push
- solder
- threaded
- welded



Schedule of Events

SEPT 25	Tankless Water Heaters	Olive Grove, Linthicum
OCT 16	Elevator Codes and Standards	Little Havana, Locust Point
NOV 20	RO/DI Water Systems	Valley Inn, Timonium
DEC 18	Pros & Cons of Plastic Pipe	Valley Inn, Timonium
JAN 23	Industry Night with UA486	UA Local 486 Training Ctr Rosedale
FEB 26	Fire Suppression Specialties	Olive Grove, Linthicum
MAR 26	Heat Pump Water Heaters	Olive Grove, Linthicum
APR 23	Everything We Do Wrong	Little Havana, Locust Point
APR 25	Annual Golf Tournament	Timbers at Troy
MAY 21	Backflow Prevention	Little Havana, Locust Point
TBD	Annual Summer Party	Details to Follow

MONTHLY SPONSORSHIP OPPORTUNITIES

Tabletop Presentations: \$100 to provide a tabletop presentation of equipment or material relative to the plumbing profession. The tabletops will be set up from the beginning to the end of the monthly meeting and provides the opportunity to provide a brief (under 5 minutes) presentation. We ask that the affiliate register for tabletop presentations in non-consecutive months to allow other presenters the opportunity to support the chapter.

Social Sponsorship: \$250 to provide a running slideshow presented on screen of logos, linecards, and a 8.5x11" sign at the bar. This slideshow will be provided during the social period. There will also be a special mention by the master of ceremonies during the opening and closing remarks. Slideshow must be submitted prior to the meeting for approval. PowerPoint, .jpg, or .png formats are preferred.

Please make checks payable to the Baltimore Chapter of ASPE. Contact Kathy Dwyer or Chuck Swope if interested