



IN THIS ISSUE



Board of Directors	Page 2
President's Report	Page 4
VP Technical Report	Page 7
Tech Corner	Page 8
VP Membership Report	Page 12
Plumbing Plans Corner	Page 12
VP Legislative Report	Page 15
AYP Report	Page 17

MEETING FORMAT

6:00 – 6:30	Social
6:30 – 6:45	Memos & Table Tops
6:45	Dinner Served
7:00 – 8:00	Presentation

**NEW
NEW
NEW
NEW**

DATE:	November 20, 2024
TIME:	<u>6:00pm to 8:00pm</u>
PLACE:	<u>The Valley Inn</u>
TOPIC:	Ultrapure (RO/DI) Water Systems
SPEAKER:	Jon Bergman

[Register Today](#)



ASPE Baltimore Board of Directors



Vice President- Technical & ASPE Young Professionals' Liaison

Julian Chivaler, LEED AP BD+C
Julian.Chivaler@gmail.com



VP- Affiliate, Scholarship & Historian

Jason J. Eagles
Bay Associates Group
Jason@bayassociates.com



Vice President- Membership

Nicole Murphy
Harry Eklof & Associates
nmurphy@harryeklof.com



Women of ASPE- Liaison

Karen Schulte, PE, CPD
Mueller Associates
KSchulte@muellerassoc.com



Chapter Ambassador

Jay Otto
Otto Sales
JayOtto@ottosales.com



President

Charles J. Swope, PE, CPD, LEED AP B+C
Mueller Associates
president@baltimoreaspe.com



Vice President- Legislative

Christopher Imhof, PE, CPD
WSSC
Christopher.Imhof@wsscwater.com



Treasurer

Kathleen Dwyer-Stephens
EJ Dwyer Company, Inc.
KDwyer@ejdwyer.com



Education Chair

Nikita Patel, PE
Sherman Engineering Company
npatel@shermanengineering.com



Corresponding Secretary

Matt Obenchain, PE
Min Engineering, Inc.
Matt.Obenchain@minengineering.com



Chapter Ambassador

Brian Crisp, CPD
Johnson, Mirmiran & Thompson
BCrisp@jmt.com

Newsletter Advertising

- As a paid advertiser, you will have your advertisement in the newsletter for one full year (9 editions) and company logo displayed on the Chapter website.
- Ads for the year will begin in the September issue and run through the May issue.
- All ads must be paid in full prior to the advertisement being included in the newsletter.
- Advertiser must provide ads in high resolution PDF format. Logo must be provided in .jpeg format, 200px wide size
- Cost per advertisement is as follows:
 - Full Page \$ 750.00
 - Half Page \$ 500.00
- Please contact Nikita Patel or Chuck Swope
- Make checks payable to Baltimore Chapter of ASPE. Please contact the Chapter Treasurer with any questions.

CASPE

American Society of
Plumbing Engineers™

BALTIMORE

Chartered in 1974



Are you interested in advancing the
Baltimore ASPE Chapter? JOIN TODAY!

We are now accepting nominations for the upcoming Awards Ceremony held during our December meeting! Please [click here](#) to complete the form to submit your nominee for the following categories.

Please note, all entries are anonymous, and they will require a detailed response for consideration. Entries without appropriate details will be automatically withdrawn from consideration. If you have any questions, please don't hesitate to reach out to a Board Member.

NOMINATIONS MUST BE SUBMITTED PRIOR TO MONDAY, DECEMBER 2, 2024

Plumbing Engineer of the Year

Demonstrated excellence in Plumbing Engineering through successful project execution and problem-solving. Performed duties with professionalism, leadership, and technical expertise. Received positive feedback from stakeholder.

Young Plumbing Engineer of the Year

Young Engineer who demonstrated excellence in the field through successful project execution and problem-solving. Performed duties with professionalism, leadership, and technical expertise. Received positive feedback from stakeholder.

Educational Achievement Award

An individual or company who has successfully contributed to the advancement of the plumbing engineering field through methods such as teaching, curriculum development, mentorship, or other similar activities.

Industry Leadership Award

An individual or company who has successfully demonstrated advocacy for the plumbing engineering industry.

Service to the Chapter

An individual or company who has demonstrated commitment to the ASPE Baltimore Chapter through volunteerism and active participation, has contributed to the success of chapter events, and has a positive influence on membership.

Project of the Year

Completed with the major involvement of a current CPDT, CPD, GPD. Project should demonstrate innovation, result in a positive impact, integrate green initiatives where applicable. Award recipient must be a Baltimore Chapter Member.



Chuck Swope, PE, CPD, LEED AP BD+C
Chapter President

Seasons greetings! No, not that one, that comes later. ASPE starts the **technical** season with a bang by having the biggest event of the year right at the beginning! I had the great pleasure of serving as your chapter president and as a chapter delegate at the 2024-2026 ASPE Business Meeting, followed by the ASPE Expo and Technical Sessions. For those unfamiliar, the Business meeting is only held biannually, and Technical Symposium is held on the odd years. It's a chance to gather all the chapter leaders and participate in the most auspicious way that our society has to offer: voting! As you may have heard in the news recently, the best way to make a difference is to get out there and vote! This season we had the most contested races that I've ever experienced; the positions for Society Treasurer, VP Affiliate, VP Education, and the President's positions were all up for grabs. The remainder of the Board of Directors ran unopposed, such as the VP Technical, VP Legislative, VP Membership and Region Directors. I am happy to announce that Region 1 was well represented this season and congrats to Nicole Parker from the Connecticut Chapter for her new position as our VP of Membership and to our new President Bryan Hutton, a Baltimore native. Bryan has a long history in ASPE, previously serving as the Society VP Education as well as the Region 5 Director and positions at the Dallas-Fort Worth Chapters. Last, but not least, Robb Risani was elected to the influential Region 1 Director's position. I've had the pleasure of knowing Robb for many years and can easily see the dedication that he still gives to the New York Chapter and will give to our entire region. I look forward to working closely with all of our Society leaders and I invite you to check out the new roster on [ASPE.org](https://www.aspe.org).

We also reviewed and approved new changes to our bylaws during the meeting as well. Boring, right? Wrong! Bylaw changes are topics that our constituents feel the most strongly about and bring out passionate speakers. This year, our own chapter member Jay Otto and Lauren Berenato, Region 1 Affiliate Liaison and current Philadelphia Chapter WOA Liaison, proposed an amendment to help our affiliates better support underserved chapters to have better representation as delegates. While we supported the amendment, others did not see the benefits due to a technicality and (as an opinion) political pressures from celebrity members. They vowed to revise the amendment for the next business meeting. Other amendments passed with flying colors to simplify the delegate quantity calculations, revise procedural amendments to align bylaw language for consistency, and a surprise bylaw split that allowed part of the amendment regarding appointing a chair to host the Nominating Committee in the event that a past president was not available. What didn't pass was the other half of the amendment to strike nominations from the floor of the meeting. Democracy is messy folks, and I'm glad of it!

In other news, each official committee that ASPE sponsors was given the opportunity to present their summary and answer questions from the attendees. I typically attend the ASPE Technical/Research and Education Committees, and this year I also attended the Long Range planning committee. These groups, in my opinion, form the foundation of why we gather as a society. The Technical Committee's main purpose is to review the proposed changes to the handbooks and other publications. Although no new standards are in the pipeline, there are still updates to bring our current guidelines up to date.

The Education Committee discussed their renewed efforts for the ASSE 6060 training and certification for Medical Gas Systems Design. This is an important step to prove to your client your understanding and expertise so they can be confident in our designs. In addition, they are producing the new CPD Review Manual. Of note, it was refreshing to hear that there have been other reports regarding Proprietary CEU Presentations and that they are taking steps to remove those presentations that violate our guidelines, just as we do at our chapter level.

The Long Range Planning committee is waiting for the new Chair position to be appointed so that they can begin in earnest. This committee proposes Memorandums of Understanding (MOUs) to the society board that give fleshed out ideas for the Board to pursue or decline to fit the needs of the Society. Many of the programs that we enjoy today come from these ideas.

I am also happy to announce that the Baltimore Chapter was presented the Award of Merit (AOM) for the 8th year in a row, a tradition that I proudly continue. This award is a quantification of the effort that we put forth. Any chapter can earn the AOM provided they earn enough credits in the categories of Chapter Activity, Education, Financial Aid, and Plumbing Engineering Awareness. We exceed the requisites every year, made easy due to the excellent programming that our board brings.



Ultra-reliable Electric and Gas-Fired Water Heaters



Industry's Best Warranties

AquaPLEX®
Engineered Duplex Alloy



Aegis® Eco-Friendly CO₂ Heat Pump Water Heaters



The Cleaner Way to Heat

 **Lync**®
by **WATTS**

17.335.9531 | lyncbywatts.com/aegis



1432 Front Ave | Lutherville, MD 21093
410-825-6616 | bayassociates.com | Jason@Bayassociates.com



Julian Chival, LEED AP BD+C
Vice President- Technical

First, a huge thank-you to everyone who joined us for our October meeting at Little Havana. It was fantastic to see both familiar and new faces enjoying the waterfront view. A special thanks to Jeanne Tebera, principal at Henry Adams and dedicated ASPE Baltimore chapter supporter, who led an uplifting presentation on elevator codes and standards. Jeanne was dropping knowledge left and right – I think the waitstaff at Little Havana could probably design an elevator now!

I'm excited to announce we are partnering with the Baltimore ASHRAE Chapter this month to bring you all a two-part series on Humidification and Ultrapure Water Systems!

Part 1: Optimizing Humidification with High-Pressure Atomization: Balancing Scale and Energy Efficiency will be hosted by ASHRAE at Union Craft Brewing on November 14th. If you're interested in learning more, check out the ASHRAE website: ashrae-balto.org.

Part 2: Understanding Ultrapure Water Purification Basics and Applications will be our standard ASPE meeting at The Valley Inn on November 20th.

Jon Bergman, National Sales Manager for ResinTech's Filterworks Division will be our presenter for the ultrapure water presentation. Jon is not only a seasoned expert with over 21 years at ResinTech but also a knowledgeable guide in all things water purification. Jon's presentation will dive into everything you need to know about ultrapure water, from its importance in labs and food and beverage production to specialized applications like humidification and boiler feed. Here's a sneak peek at what Jon will cover: common water contaminants, water quality standards and water types (regent grade water, AAMI ST08, USP, etc.), purification technologies, and cover several applications including: humidification, recirculating central systems, POU labs, boiler feed, food and beverage.

We hope to see you at The Valley Inn in Timonium on November 20th!

See you soon, ASPE Baltimore fam!

Beyond the Water Cooler: The Metamorphosis of Workplace Break Rooms

The goal is to shed their clinical demeanor and create inviting havens where colleagues linger, recharge and connect.

September 2, 2024

Yesterday's break rooms were designed to be a functional space; an uninspiring place where employees grab a quick bite before returning to their desks. However, there has been a dynamic shift in what a break room can be. Today's break rooms are shedding their clinical demeanor and embracing a new identity that mirrors the warmth and ambiance of our favorite restaurants, pubs and coffee shops.

These trends emphasize comfort, safety and a sense of community, encouraging employees to enjoy their breaks and recharge during the workday.

The design of the modern break room kitchen centers around efficiency and fostering a sense of community. It boasts an array of food and coffee options to suit a wide range of preferences.

Some companies are taking it further by introducing micro markets: offering employees a broader selection of foods and the convenience of purchasing meals on-site. These micro markets often feature meal options in vending machines or display refrigerators, along with snacks and coffee, either purchasable or complimentary.

Community islands promoting team interaction are becoming a norm, often equipped with power sources to facilitate work in a more relaxed setting. High-end appliances such as water/ice machines and display refrigerators are installed for convenience, contributing to a cohesive design that mirrors the ambiance of a chic café or bar. Companies also incorporate amenities such as kegerators for beer or cold brew to enhance social gatherings and corporate events.

Subtle design moves, such as under-the-counter microwave placement and sophisticated millwork, elevate the breakroom's aesthetic, shifting it from a traditional break room to a modern café vibe.

Lounge areas are often found adjacent to the break room kitchen and act as communal havens, echoing the ambiance of coffee shops, eateries and bistros. They usually offer a variety of seating options, from plush lounge chairs and secluded booths to shared benches, catering to a range of activities and personal preferences.

Strategically positioned at the heart of the office, these lounges and break rooms are open and inviting, enhancing teamwork and interaction. Often positioned near windows, they provide a visual and physical link to the outside world, inviting natural light and views that contribute to well-being and vitality.

In addition, they are equipped with audio-visual technology to create versatile spaces, ready for everything from impromptu meetings to all-company events. These thoughtful upgrades are aimed at crafting spaces that not only encourage casual collaboration and relaxation but also serve as a retreat from the traditional office setting, meeting the newfound desire for comfort and flexibility that employees have grown accustomed to at home.

Wellness Rooms: Offering Care and Support

Wellness rooms are being programmed into or adjacent to break rooms, embracing a more holistic approach to employee well-being. These specialized spaces cater to specific needs, fostering a sense of care and support for employees.

One use would be a lactation room for mothers returning to work. They are equipped with a comfortable lounge chair, a side table, convenient wall outlets, a refrigerator and a sink, with ample counter space for cleaning. These serene havens offer privacy, comfortable seating, and soft lighting for moms to have a private space without feeling rushed or stressed.

Beyond the Water Cooler: The Metamorphosis of Workplace Break Rooms

Respite rooms are a second type of ancillary space prioritizing relaxation and rejuvenation for staff. These dimly lit sanctuaries offer employees a chance to escape the hustle and bustle of the office. Massage chairs provide instant relief and physical relaxation. These respite rooms strive to include windows, allowing access to natural light and connecting with nature to help employees recharge during their breaks.

Lastly, some recharge rooms use aromatherapy: fragrant oils or diffusers infusing the air with calming scents. Whether it's lavender, eucalyptus or citrus, these aromas enhance relaxation and promote mental clarity.

Break Room Plumbing Design

Based on these trends, understanding the client and the design teams' vision is paramount to the cohesive design of the plumbing systems. Selecting the right plumbing fixtures can reinforce this atmosphere and elevate the overall experience. From faucets to bottle fillers to sink designs, all come together to enhance both the function and atmosphere.

Several plumbing approaches should be considered when providing the plumbing design to support the break room. The examples of plumbing approaches listed in this article are not exclusive to modern break rooms and can be applied to various areas.

Selecting faucets, whether manual or automatic (touch-free), should be part of the overall story the break room conveys. When combining aesthetics with safety and comfort, an automatic break room sink faucet is normally preferred. Automatic faucets also create a safer and more sanitary environment. Without human contact, the break sink faucet will have fewer contaminants on its surface and less chance of spreading contamination to users.

However, not everyone is familiar with the operation of these automatic faucets. Regardless of the selection, the faucet must be easy to operate. Otherwise, instead of promoting handwashing, it will discourage the use when staff are frustrated with the operation.

Reverse osmosis (RO) is a common request from clients to purify water for break room drinking water and ice machines. The plumbing designer needs to coordinate with the RO filter location so it's hidden but still provides proximity to fixtures and access for maintenance.

Point-of-use water or instantaneous water heaters are also often used for these applications. While normally found under the sink, options are available to place instantaneous water heaters in a box with access doors installed within a wall. This not only helps with aesthetics but also frees up the space under the sink for the RO filter system or other uses. Remember that these water heaters have disconnect switches with code-required clearance requirements for service.

Some overlooked plumbing features include wall or floor cleanouts. As the name implies, these are provided at fixtures, larger changes in direction and longer runs to allow for cleaning should the line become blocked. Careful planning is required to provide the code-required cleanouts. The preference is to have these accessible but out of sight. Different approaches, such as routing, sizing and support, can also affect the plumbing breakroom design.

Modern break rooms' holistic approach to employee well-being is closely planned in conjunction with adjacent rooms. The plumbing piping distribution should follow a similar approach. Ideally, pipe routing is planned in such a way that plumbing fixtures in nearby areas cannot negatively affect each other, such as hammering. Placing plumbing fixtures nearby also reduces the plumbing infrastructure required, simplifying designs.

Beyond the Water Cooler: The Metamorphosis of Workplace Break Rooms

Office break room design has shifted from a generic utilitarian design to create spaces that feel more like restaurants, pubs or coffee shops. The goal of modern break room design is to create inviting havens where colleagues linger, recharge and connect. Additions of ancillary wellness and recharge rooms have become a huge staff satisfier as employees feel their workplace is valuing their needs.

Ultimately, the goal is to create vibrant community hubs with a balance of designing a space and promoting well-being.

Maria Delasotta is an interior design associate in the health studio at SmithGroup. She is certified by the National Council for Interior Design Qualification and LEED, with more than 13 years of experience designing for various clients, locally and nationally.

Amy Dooley is an interior design associate in SmithGroup's workplace studio. She is certified by the National Council for Interior Design Qualification and LEED, with more than 20 years of experience designing office spaces for a variety of local and national clients.

Lowell Manalo is the plumbing discipline leader for the western region at SmithGroup. He is a member of the American Society of Plumbing Engineers and has more than 20 years of experience designing plumbing systems for a variety of building types.

Tepid Water Solutions



THE RIGHT TEMPERATURE. AT THE RIGHT TIME.

Bradley's tepid water solutions are designed to create a safe tepid temperature, a necessary addition to your safety planning. The current ANSI standard calls for emergency eyewash and drench showers to deliver tepid water for 15 minutes. This assures that a user would not be subjected to very cold water and possible hypothermia or very hot scalding water and possible skin burns.

Tepid Water Solutions. Brought to Life.

For more information please contact:
Kathleen Dwyer | E.J. Dwyer Co.
Quality Representation for 40+ Years
Mobile: 443-250-0285
Office: 240-553-0112



A WATTS Brand

ITHERMOSTATIC MIXING VALVES | TANKLESS WATER HEATERS | TEPID WATER SYSTEMS



Nicole Murphy
VP Membership

We are delighted to welcome our newest members to the Baltimore Chapter:

Nicholas Torbert
Thomas Yost

We are thrilled to welcome each of you! We can't wait to connect at our upcoming gathering. Membership brings a host of benefits, with our monthly meetings being a prime example.

We urge our current members to actively invite their colleagues to these valuable sessions and to consider the advantages of becoming part of the ASPE community. Together, we will cultivate professional growth and collaboration. For more information on membership and our events, visit <https://aspe.org/join>. I look forward to seeing everyone on November 20th at The Valley Inn!

Dave Bailey
Plumbing Plan Reviewer

As an ASPE Chapter member for both Washington, D.C. and Baltimore, I have the luxury in attending the local ASPE monthly technical meeting on either a Tuesday or Wednesday evening. At last February's meeting, I opted for the Baltimore Chapter meeting in Linthicum, Maryland, to hear Professor Ken Isman of the University of Maryland Department of Fire Protection Engineering delivery on a range of Fire Protection Engineering topics. During the Q & A session, someone in the audience ask Ken if the Plans Reviewers really look at the submitted drawing. I immediately blurted out, "I do!" At the DC Chapter Joint Workshop Meeting with Local 5 Plumbers Union, I was a panelist and divulged the extent to which I personally review drawing sets. Primarily, I review the drawing for Code compliance. During this process, I come across misspelled words and misinformation whereby I offer editorial commentary. For instance, take a moment to review the following paragraph taken from a drawing specification that I recently reviewed and determine why/what commentary that may have been provided:



ALL NEW SANITARY, SOIL, WASTE, AND VENT WATER PIPING SHALL BE SERVICE WEIGHT CAST IRON, BELL AND SPIGOT, PIPE AND FITTINGS, ANSI A.112.5.1 AS MANUFACTURED BY TYPE PIPE AND FOUNDRY CO., U.S. PIPE AND FOUNDRY CO., CENTRAL FOUNDRY OR APPROVED EQUAL. TYPE "TY-SEAL" OR APPROVED EQUAL, NEOPRENE POSITIVE SEAL ELASTOMERIC COMPRESSION TYPE GASKETS SHALL BE USED AT ALL JOINTS. AS AN OPTION, ALL NEW SANITARY, SOIL, WASTE, AND VENT PIPING 4" AND SMALLER MAY USE HUBLESS SERVICE WEIGHT CAST IRON PIPE, FITTINGS AND JOINTS WITH TYPE "NO-HUB" STAINLESS STEEL CONNECTORS. IN ADDITION, ALL VENT PIPING MAY BE DWV COPPER PIPE AND FITTINGS WITH SOLDERED JOINTS. GASKETS, JOINTS, CONNECTORS, SPECIALTIES AND PIPE SHALL BE MANUFACTURED AND PROVIDED BY THE SAME MANUFACTURER.

(I will share with you my commentary in the next edition of the Baltimore APSE Newsletter.

Manufacturers Representative Since 1968

Harry Eklof

Representing :: & Associates, Inc.

CALEFFI
Hydronic Solutions



FIELD CONTROLS



FUJITSU **AIRSTAGE**



Navien



FLORESTONE
A spec above.



SCAN THE QR-CODE

to get more information
on product and training!



ARE YOU RESPONSIBLE FOR DESIGNING COMPRESSED GAS AND VACUUM SYSTEMS?



SINCE 1920, SHERMAN ENGINEERING

has been offering the optimum engineered vacuum and compressed gas systems in the Healthcare, Pharmaceutical, Chemical, Power, and General Industrial markets.

OFFERING 24/7 EMERGENCY SERVICE

our factory trained and ASSE 6000 credentialed service technicians are available to manage preventative maintenance and emergency outages.



QUESTIONS? CONTACT

Nikita Patel, PE
570-899-9090

npatel@shermanengineering.com
1830 County Line Rd, Unit 303
Huntingdon Valley, PA 19006

01

Vacuum Pumps

Liquid Ring, Dry Rotary Vane, Dry Rotary Claw, Lubricated Rotary Screw, Lubricated Rotary Claw, Lubricated Rotary Vane, Ejectors

02

Compressors

Oil Less Scroll, Oil Free Rotary Screw, Oil Free Rotary Claw, Oil Flooded Rotary Screw, Oil Flooded Reciprocating, Dryers, Drains, Purifiers, Filtration, Lubricants

03

Medical Gases

ASSE 6060 Design Support, Medical Vacuum, Medical Air, Compressed Gas Manifolds, Medical Gas Outlets, Ceiling Columns, Pedestals, Alarm Panels, Zone Valve Boxes, Gas Monitors

04

Field Services

Medical Gas Verification, 24/7 Field Service Technicians, Installation Assistance, Job Walks, Sizing & Selection, ASSE 6000 Training

05

Engineering Services

Custom solutions for compressed gases and vacuum. Medical gas design sizing and pipe layout. Support within healthcare, pharmaceutical, chemical, power, and general industrial market segments.





Chris Imhof, PE, CPD
Vice President- Legislative

International Energy Agency (IEA) releases third annual Breakthrough Agenda Report

Since its launch at COP 26, the Breakthrough Agenda has become established as an annual collaborative process centered around the Conference of the Parties (COP) meetings of the United Nations Framework Convention on Climate Change (UNFCCC). It is currently supported by 59 countries representing over 80% of global GDP, and by over 100 initiatives working to enhance collaboration within major emitting sectors. Countries can endorse Breakthrough goals to make clean technologies and sustainable practices more affordable, accessible and attractive than their alternatives by 2030 in the power, road transport, hydrogen, steel, cement, buildings and agriculture sectors. This report covers six of the seven sectors, with agricultural covered in a separate report.

The Breakthrough Agenda establishes an annual cycle to track developments towards these goals, identify where further coordinated international action is urgently needed to accelerate progress and then galvanize public and private international action behind these specific priorities in order to make these transitions quicker, cheaper, and easier for all.

The Code Council launched the Building Capacity for Sustainable and Resilient Buildings initiative in support of the Buildings Breakthrough at COP28. The Initiative focuses on capacity-building resources (e.g. policies, tools, organizational entities) needed to create a regulatory ecosystem for the effective implementation and enforcement of building codes, including energy codes.

In addition to the Initiative, the report also highlights the collaboration between the American Society of Heating, Refrigerating and Air-Conditioning Engineers (ASHRAE) and the Code Council to jointly develop an international standard (ASHRAE/ICC Standard 240P). This standard will support quantification of greenhouse gas (GHG) emissions across the lifecycle of a building to provide consistency in verification and reporting and is expected to open for public review later this year.

Sources:

<https://www.iea.org/reports/breakthrough-agenda-report-2024>

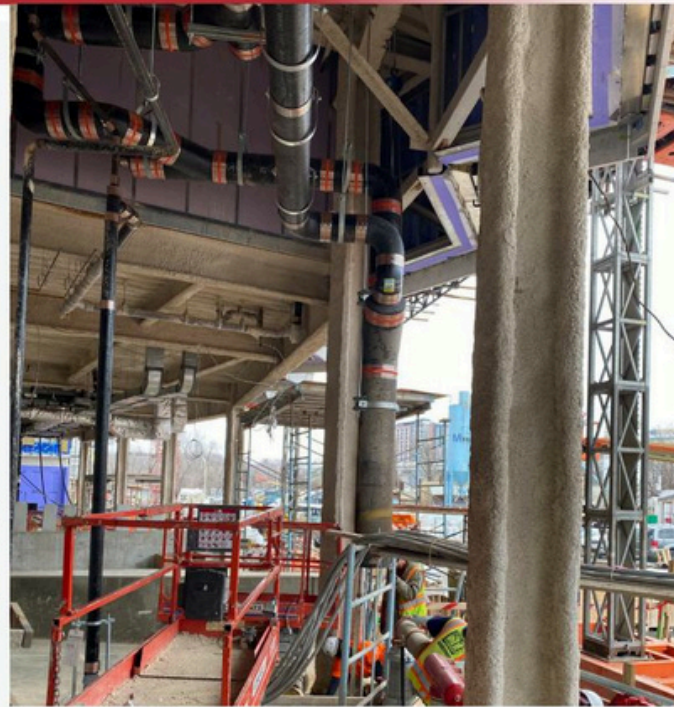
<https://www.phcppros.com/articles/20275-international-code-council-initiatives-highlighted-in-2024-breakthrough-agenda-report>

Washington Gas, Other Groups File Lawsuits Against Gas Ban Legislation

On October 17, Washington Gas, the National Association of Home Builders (NAHB), the Maryland Building Industry Association the Teamsters Local 96, LIUNA Philadelphia/Baltimore/Washington Laborers' District Council, the Restaurant Law Center, the National Federation of Independent Business and the National Apartment Association, filed dual lawsuits in Washington, D.C. and Montgomery County, Maryland, respectively, challenging the gas bans on new construction set to take effect in 2026 in both jurisdictions.

Read more here: <https://www.nahb.org/news-and-economics/press-releases/2024/10/nahb-joins-coalition-to-take-legal-action-against-gas-bans-in-washington-dc-and-maryland>

SUPPORT FOR ASPE BALTIMORE



Mueller Associates practices and promotes the link between good quality plumbing, health, environmental sustainability, and economic prosperity.



Mueller

Mueller Associates
1306 Concourse Drive, Suite 100
Linthicum, MD 21090
www.muellerassoc.com
410.646.4500

ENGINEERING GREAT EXPERIENCES



Julian Chivaler, LEED AP BD+C
AYP Liaison

AYP Report

Hey young folks, there's nothing AYP-specific in the pipeline right now, but I'm not one to let article space go to waste – keep reading, I dare you!

Chuck and I just returned from the ASPE National Convention in Columbus, Ohio. If you're interested in the specifics of what we covered at the business meeting, check out Chuck's article. I just wanted to take a moment to say: **getting involved with ASPE at the national level is awesome!** Picture this: you're at a Baltimore ASPE meeting, but instead of 40 like-minded plumbing professionals, you're surrounded by thousands. When you're at a convention or tech symposium, there's palpable excitement in the air from being around folks that are passionate about what they do and can't wait to nerd out about whatever cool projects they are working on now. Have a technical question? I guarantee there are at least 12 different reps that have the answer you're searching for. Here's what's in the pipeline:

- 2025 Technical Symposium is in Orlando, FL from September 24-28.
- 2026 National Convention & Expo is in Oklahoma City, OK from October 8-14.

If you're at all interested in coming out to a future symposium or convention, let me or Chuck know; we will help you figure out the details. And as always, if you've got any suggestions for future events or you'd like to be involved with AYP event planning or otherwise, reach out!





TO LEARN MORE CONTACT
Jason Eagles: Bay Associates
JASON@BAYASSOCIATES.COM

OMNI

PBX

A fully integrated, energy efficient heat pump water heater. Available in 50, 65, 80 & 119 gallon capacities.



Air or water source heat pump

Fully configurable heat pump system with 120-5000 gallon storage capacity and fully programmable controller



PLC Controller



Recirc/backup heater



Cement lined storage tank

HHP

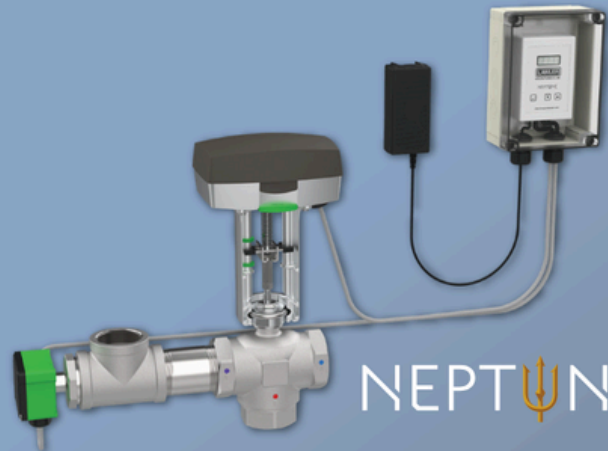
OMNI



Experience Ease of Installation, Integration, and Control with Lawler's Fully Electronic Mixing Valve, Neptune!

Neptune EMX Electronic Mixing Valve

- Accurate control of domestic hot water in all flow conditions
- Simple 3 button interface
- High temperature alarm
- Two valve installation in parallel with one controller
- ModBus and BACnet™ communication standard
- Rugged lead-free stainless-steel valves
- ASSE 1017 and NSF 372 listed



NEPTUNE

Neptune EMX Electronic Mixing Valve Manifold Systems for Recirculation

- Plug-and-play
- Pre-assembled / tested
- Standard and custom designs

Contact your local rep **Jason Eagles** at **Bay Associates Group (Jason@Bayassociates.com)** or visit www.temperedwater.com to learn more.





PLUMBING GROUP



Superior Performance & System Reliability

DuRa Pipe™ enhanced epoxy coating applied to cast iron soil pipe and fittings. It is well suited for aggressive DWV applications where greater performance is required.



ABIFoundry.com



Anaco-Husky.com



PIPE & COUPLING

TylerPipe.com



SCAN TO CONTACT
TECH TEAM



2022
MPB USA
CATALOG
SPECIFICATION DRAINAGE
PRODUCTS
LIT-067



2022
CLPB CATALOG
LIGHT COMMERCIAL
DRAINAGE PRODUCTS
LIT-048



2022
ACCESS DOORS
CATALOG
ACCESS DOORS
UNIVERSAL - DRYWALL - FIRE RATED
LIT-043



2022
BACKFLOW
CATALOG
BACKFLOW PREVENTERS
AND ACCESSORIES
LIT-071



2022-06
COUPLINGS
CATALOG
NO HUB COUPLINGS
BLACK HUB - HEAVY DUTY - FLEXIBLE
LIT-044



2023
POLYMER CONCRETE
TRENCH DRAINS
CATALOG
4", 6", 8", 10" INTERNAL WIDTHS - SHALLOW CHANNELS - CATCH BASINS
(8", 10" and 12" OVERALL WIDTHS)
LIT-076



2023
GRP & STEEL
TRENCH DRAIN
SYSTEMS
CATALOG
GRP & STEEL TRENCH
DRAIN PRODUCTS
4", 6", 8", 10" INTERNAL WIDTHS - SHALLOW CHANNELS - CATCH BASINS
(8", 10" and 12" OVERALL WIDTHS)
LIT-046



2023
SHOWER DRAIN
CATALOG
STAINLESS STEEL
SHOWER DRAINS
LIT-077



2023
STAINLESS STEEL
TRENCH DRAINS
CATALOG
TRENCH, FLOOR AND
KITCHEN DRAINS, CLEANOUTS
AND ACCESSORIES
LIT-072



2020
ROOFGUARD
CATALOG
"UNLOGGABLE"
ROOF DRAIN DOMES
LIT-058



2023
C-PORT RUBBER
SUPPORTS
CATALOG
ROOFTOP RUBBER
PIPE SUPPORTS
EXTENSION - WINGBODY - ROLLER
LIT-047



2022
DIALYSIS BOXES
CATALOG
DIALYSIS BOXES
LIT-070



2020
HYDROMAX
CATALOG
SIPHONIC ROOF
DRAINAGE SYSTEMS
PRIMARY - OVERFLOW - GUTTER
LIT-062



2023
INTERCEPTOR
CATALOG
HOLE INTERCEPTORS &
ACID NEUTRALIZATION
TANKS
LL-MAX - BG-MAX - SUPER-MAX
LIT-095



2022-08
TRAP SEAL
PRIMERS
CATALOG
TRAP SEAL PRIMERS
AND WATER HAMMER
ARRESTORS
PRESSURE DROP ACTIVATED - ELECTRONIC - FLOOR DRAIN SEAL
LIT-062



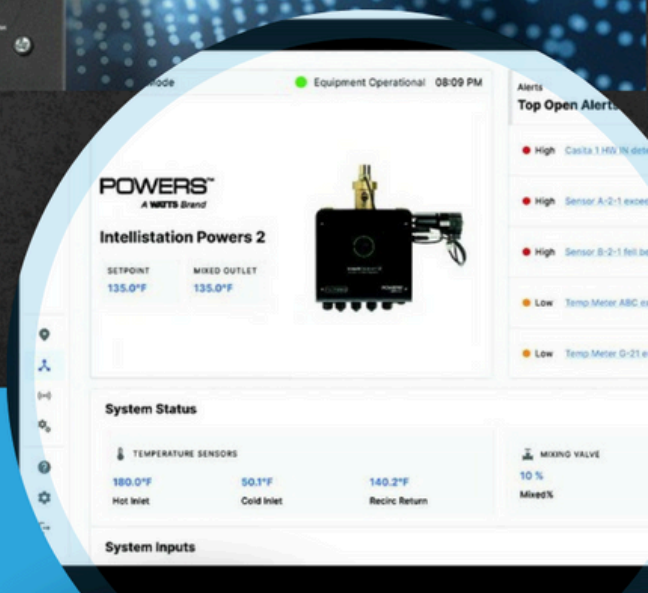


THE NEXT GENERATION OF DIGITAL MIXING

Temper Water. Not Expectations.

Key Features:

- Improved temperature control with Globe Valve Design
- Sensor package options to fit any application
- Improved touchscreen with screen swipes
- Full temperature monitoring and pressure/flow rate monitoring options



IntelliStation 2 performance data can be viewed from anywhere and tracked over time for trends that can help optimize your system and anticipate issues. This next generation mixing valve can be monitored and controlled remotely via Nexa or your BMS, and doesn't require factory preprogramming, a laptop, or special software when commissioning or making or adjustments.

works with nexa



nexaplatform.com

POWERS™
A WATTS Brand



powerscontrols.com



Interested in learning more?
Contact Matt Morris of The Joyce Agency
410-903-9177 | mmorris@thejoyceagency.com

Come see the most disruptive break through pumping technology the industry has seen in decades!

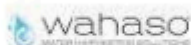


***-Eliminates the wet well;
Maintenance
-No Odors***

-Reduce excavation/construction costs

AMES, Inc. is a manufacturer's representative of water and wastewater treatment, pumping, and HVAC equipment. We serve the municipal, commercial, and industrial markets in Delaware, Maryland, Northern Virginia, West Virginia, and District of Columbia.

PARTNERING WITH THE INDUSTRY'S PREMIER BRANDS



PRODUCT OFFERINGS:

- Overwatch Direct Inline Pumping System
- Pumps
- Controls
- Water & Wastewater
- Packaged Systems
- Rainwater & Water Reuse
- Grease/Interceptor

PARTS & SERVICES

- New Construction Field Service
- Warranty & Repair
- Maintenance Contracts
- Parts & Aftermarket Sales



8918 Herman Drive | Columbia, MD 21045
www.amesinc.com | info@ames.com



**HOW CAN WE HELP?
410.995.8899**



WILLOUGHBY

COUNT ON US.



Family-owned and -operated since opening in 1947, Our fixtures and water management systems are Willoughby-tough and purpose-built for their environment! From sinks and lavatories to ligature-resistant plumbing fixtures for behavioral health facilities, we can help with fixtures for the most extreme environments.



7702 Old Alexandria Ferry Road
Clinton, MD 20735

www.tomweaverassociates.com

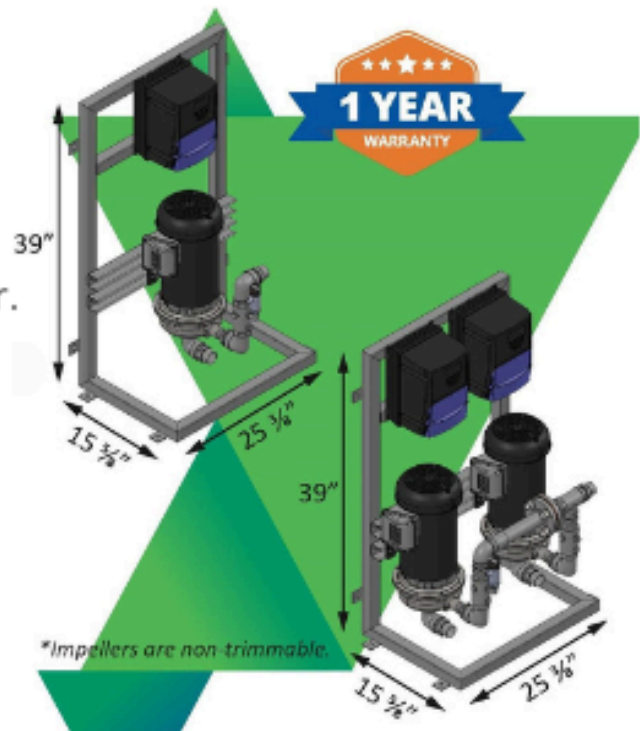
301.877.2300

When You Need a Micro Boost, Insist on a MicroFlo



MicroFlo Series Out of the Box High Efficiency Compact Booster.

The MicroFlo Series is a highly compact, 1 or 2 pump booster for LOW FLOW -- LOW BOOST applications. Buildings that are only a couple stories, have lower water movement needs, or small footprints. **The MicroFlo is designed specifically for these smaller appli-**



7702 Old Alexandria Ferry Road
Clinton, MD 20735

www.tomweaverassociates.com

301.877.2300



DURAGUARD® PRODUCT LINE



Public health and safety are a common concern. Targeted for commercial applications, Bemis has a comprehensive offering of seats with DuraGuard® Antimicrobial Built-In Seat Protection™ and STAY·TITE™.

WHAT IS DURAGUARD?

DuraGuard is an antimicrobial property built into the toilet seat to inhibit the growth of bacteria. The active ingredient in DuraGuard is zinc pyrithione, a non-VOC (volatile organic compound), broad-spectrum, highly effective antimicrobial agent used to control mold, mildew, yeasts, fungi, algae, gram positive and negative bacteria. DuraGuard does not protect users or others against bacteria, viruses, germs, or other disease-causing organisms.

WHAT IS STAY·TITE?

STAY·TITE Seat Fastening System™ anchors the toilet seat to the bowl by using a patented bolt design with a finned bushing and glass-filled nylon nut, eliminating the need to retighten the seat to the bowl after installation.

**CONTACT YOUR REP FOR
ADDITIONAL INFORMATION**

OFFICE



HOSPITALITY



SCHOOLS



HEALTHCARE



YOUR COMMERCIAL SPEC JUST GOT EASIER




ElectriFLEX
S E R I E S™

Specifiers know they can count on our **ElectriFLEX Series™** for a vast array of commercial solutions. It gives you the flexibility to meet every one of your customer's installation requirements.

- Features our exclusive Vitraglas® tank lining with Microban® antimicrobial technology
- Converts easily to the right voltage, phase, and kW input to meet your application demands
- Field-convertible at the supply house or in the field by a qualified installer using a conversion kit
- Light, Medium, and Heavy-Duty models available: a single model solves multiple installation requirements



Check out our Specifying
& Cross Reference Tools!


BRADFORD WHITE
WATER HEATERS
Built to be the Best®



Barnard Associates
55 Aileron Court, Suites 1 & 2
Westminster, MD 21157
(P) 410-720-0900, (F) 410-720-0904

Canplas

Plastic Grease Traps, PVC DWV Fittings and Plumbing Specialties

Centoco Corp

Toilet Seats

Compass Manufacturing

Toilets and Stainless-Steel Sinks

Enfield

Acid Waste Piping, High Purity Piping

Guardian

Double Containment Piping Systems

Hammond Valves

Plumbing and Heating Valves

Ideal Tridon Couplings

No Hub, Heavy Duty and Specialty Couplings

Ipex

Schedule 40 & 80 PVC and CPVC Pipe

Milwaukee Valve

Domestic & Import Metal Ball, Butterfly, Check, Gate, Globe

High Performance Butterfly

NAC-NewAge Casting

Cast Iron and Epoxy Coated Pipe

SAS Safety Corporation

Protective Safety Equipment

Speakman Company

Hospitality Fixtures, Commercial Brass Emergency Equipment

Wolverine Brass

Plumbing Products for the Professional

Contact:

Office Phone: 410-720-0900

Office Fax: 410-720-0904



SHAFER, TROXELL & HOWE Inc.

Your Solutions Partner Since 1973



Representing:

Grundfos • Peerless •

PACO • Myers • Synicroflo •

Cougar Controls • Topp Industries •

Primex Controls • See Water



Applications and Service Specialization:

Sump/Sewage Pump Stations • Water Booster Systems •

Fire Pump System • Rainwater Harvesting Systems •

Circulating Pumps • Water Filtration Systems



Contact our Engineering Team

800•233•7718 | engineering@sthinc.com

97 - D Monocacy Blvd. • Frederick, MD 21701 • www.sthinc.com

THE PATHWAY TO DECARBONIZATION



DESIGNED ★ ENGINEERED ★ ASSEMBLED
USA

VERITUS[®]

Heat Pump Electric Water Heater
High Coefficient of Performance
Pairs with Thermal-Stor™ Heat Pump Storage Tank
Operates In Below Freezing Ambient Conditions of 23°F
Modular Design Concept
Low Global Warming Potential (GWP) Refrigerant (R513A)
Package Solutions Available
Features **SMARTTECH™** Operating Control

LECTRUS™

Resistance Electric Boiler
15 - 150 Kilowatts
Modulating Control
Cascade Up to 8 Boilers
ASME Rated Pressure Vessel
160 PSI Working Pressure
SMARTSYSTEM™ Control

 **Lochinvar**

CUMMINS-WAGNER

100% Employee Owned

Call 1-800-966-1277 Or Visit
Cummins-Wagner.com For Our Contact Information

Edge
HP IRON

CHARLOTTE
PIPE AND FOUNDRY COMPANY

A NEW LEVEL OF COATING
PERFORMANCE:
EDGE HP IRON™

SPECIALLY COATED CAST IRON
PIPE AND FITTINGS
FOR AGGRESSIVE DWV APPLICATIONS

charlottepipe.com/EdgeHPIron



A Thinner Shield is Better!

TRANSFERENCE OF TORQUE

Thicker gauge shield material blocks the torque from getting to the gasket. A thinner shield protects the gasket while allowing a more efficient transfer of torque therefore providing a better seal.

DEFLECTION

A thinner shield is more forgiving, flexible, and malleable. It bends with the joint allowing the seal to remain strong. A thick shield is rigid and does not form itself over the joint.

STEPPED JOINTS

The thinner shield allows the shield to conform over the stepped joint providing a more effective seal.



Interested in learning more? Contact Glenn Spilling, National Sales Manager
gspilling@idealtridon.com | 615-686-7826

Or visit us online at IdealTridon.com!



Viega, LLC - Mike McCarthy:

Technical Manager (571) 328-1143

mike.mccarthy@viega.us

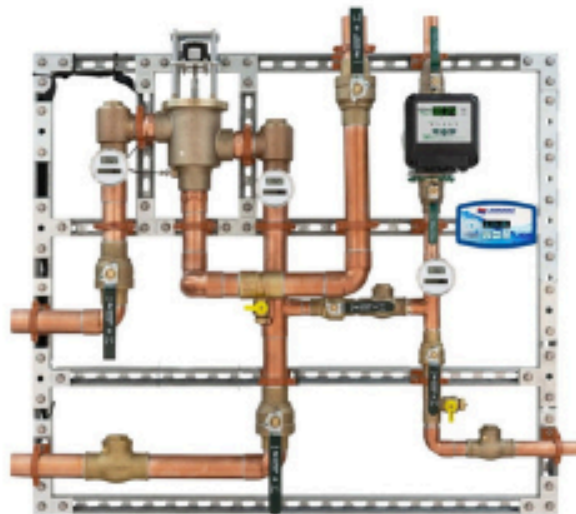
Viega Questions? Lunch & Learn sessions, project support & specification review.



viega



Complete Mixing Valve Solutions



7702 Old Alexandria Ferry Road
Clinton, MD 20735

www.tomweaverassociates.com

(301) 877-2300

valve and piping solutions

don't just buy products, buy solutions

At Aalberts integrated piping systems, we create mission-critical products surrounding valve and connection technology.

Our group creates systems that are applicable for key verticals such as residential, commercial, industrial, and utility. These are designed and developed by our team of in-house engineers.

This complete piping and valve solution combined with our services are available through different channels.

verticals

- battery
- chemical
- data centers
- education
- food and beverage
- hospitality
- oil & gas
- pharmaceutical
- power generation
- mixed-use
- water treatment

materials

- brass
- bronze
- carbon steel
- copper / steel
- ductile iron
- lead-free brass
- stainless steel

connections

- flange
- groove
- press
- push
- solder
- threaded
- welded



Schedule of Events

SEPT 25	Tankless Water Heaters	Olive Grove Linthicum
OCT 16	Elevator Codes and Standards	Little Havana Locust Point
NOV 20	RO/DI Water Systems	Valley Inn Timonium
DEC 18	Pros & Cons of Plastic Pipe	Valley Inn Timonium
JAN 23	Industry Night with UA486	UA Local 486 Training Ctr Rosedale
FEB 26	Fire Suppression Specialties	TBD
MAR 26	Heat Pump Water Heaters	TBD
APR 23	Radon Mitigation	TBD
APR 2024	Annual Golf Tournament	Details to Follow
MAY 21	Everything We Do Wrong	TBD
JUN TBD	Annual Summer Party	Details to Follow

MONTHLY SPONSORSHIP OPPORTUNITIES

Tabletop Presentations: \$100 to provide a tabletop presentation of equipment or material relative to the plumbing profession. The tabletops will be set up from the beginning to the end of the monthly meeting and provides the opportunity to provide a brief (under 5 minutes) presentation. We ask that the affiliate register for tabletop presentations in non-consecutive months to allow other presenters the opportunity to support the chapter.

Social Sponsorship: \$250 to provide a running slideshow presented on screen of logos, linecards, and a 8.5x11" sign at the bar. This slideshow will be provided during the social period. There will also be a special mention by the master of ceremonies during the opening and closing remarks. Slideshow must be submitted prior to the meeting for approval. PowerPoint, .jpg, or .png formats are preferred.

Please make checks payable to the Baltimore Chapter of ASPE. Contact Kathy Dwyer or Chuck Swope if interested