



IN THIS ISSUE



BALTIMORE

Board of Directors	Page 2
President's Report	Page 4
VP Technical Report	Page 7
Tech Corner	Page 8
Membership Report	Page 12
VP Legislative Report	Page 15
AYP Report	Page 18
Plumbing Plan Review Corner	Page 19

MEETING FORMAT

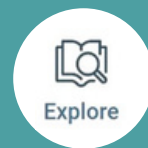
6:00 – 6:30	Social
6:30 – 6:45	Announcements & Table Tops
6:45	Dinner Served
7:00 – 8:00	Presentation

DATE:	September 17, 2025
TIME:	6:00pm to 8:00pm
PLACE:	Little Havana
TOPIC:	Engineering Ethics and Dispute Resolution
SPEAKER:	Rebecca A. Bowman, Esq., P.E., D.F.E. (NAFE #1153)

[Register Today](#)



1325 KEY HWY, BALTIMORE, MD 21230
PHONE: 410-837-9903



Explore



Connect



Engage

DOWNLOAD THE ASPE CONNECT MOBILE APP!

Download the Connected Community app in the Apple or Google Store

Enter the community's domain name:
connect.aspe.org

Login using your usual community credentials. Select "stay logged in" if the option appears.

ASPE Baltimore Board of Directors



President

Charles J. Swope, PE, CPD, LEED AP B+C
Mueller Associates
president@baltimoreaspe.com



Vice President- Technical & Education Chair

Julian Chiveral, LEED AP BD+C
Julian.Chiveral@gmail.com



Vice President- Legislative

Christopher Imhof, PE, CPD
WSSC
Christopher.Imhof@wsscwater.com



Vice President- Membership

Nicole Murphy
Harry Eklof & Associates
nmurphy@harryeklof.com



Vice President - Affiliate

Sepideh McQuay
The Joyce Agency
smcquay@thejoyceagency.com



Treasurer

Kathleen Dwyer-Stephens
EJ Dwyer Company, Inc.
KDwyer@ejdwyer.com



Historian & Scholarship Chair

Jason J. Eagles
Bay Associates Group
Jason@bayassociates.com



Women of ASPE- Liaison

Karen Schulte, PE, CPD
Mueller Associates
KSchulte@muellerassoc.com



Corresponding Secretary

Matt Obenchain, PE
Min Engineering, Inc.
Matt.Obenchain@minengineering.com



ASPE Young Professionals Liaison

Justin Saelens, LEED AP BD+C
Mueller Associates Inc
JSaelens@muellerassoc.com



Chapter Ambassador

Jay Otto
Otto Sales
JayOtto@ottosales.com



Chapter Ambassador

Nikita Patel, PE
Sherman Engineering Company
npatel@shermanengineering.com

Newsletter Advertising

- As a paid advertiser, you will have your advertisement in the newsletter for one full year (9 editions) and company logo displayed on the Chapter website.
- Ads for the year will begin in the September issue and run through the May issue.
- All ads must be paid in full prior to the advertisement being included in the newsletter.
- Advertiser must provide ads in high resolution PDF format. Logo must be provided in .jpeg format, 200px wide size
- Cost per advertisement is as follows:
 - Full Page \$ 750.00
 - Half Page \$ 500.00
- Please contact Nicole Murphy or Chuck Swope
- Make checks payable to Baltimore Chapter of ASPE. Please contact the Chapter Treasurer with any questions.



STRIEM



Sencillo™
Simple.



SYMMONS®



E|M MUSTEE



ACCOR® TECHNOLOGY, INC.



walraven



AQUATru®
BY IDEAL LIVING



WWW.VAMDASSOCIATES.COM

vmaassociates

8505 Bell Creek Road, Suite E
Mechanicsville, VA 23116
804-569-0360
info@vamdinc.com

COMMERCIAL & INDUSTRIAL
PLUMBING REP AGENCY FOR
OVER 40 YEARS

NO. Features

Virginia Maryland Associates is a manufacturer's representative agency serving the commercial, mechanical, and industrial markets in our territory.

We proudly represent industry-leading manufacturers, providing superior sales and service throughout the entire construction channel. Engineers, wholesalers, and contractors rely on Virginia Maryland Associates from the early design stages to commissioning.

With extensive product knowledge and deep industry expertise, we help clients make informed business decisions that best suit their needs. Our hands-on sales team is ready to assist you in any way possible, making your job a little easier.

We look forward to working with you.

**PLUMBING
SOLUTIONS &
SPECIFICATIONS**

PL-101



Chuck Swope, PE, CPD, LEED AP BD+C
Chapter President

Welcome to the 2025-26 season of the Baltimore ASPE Chapter! In case you are new to the chapter (or just hiding under a rock), we just celebrated our 50th anniversary all season long. We had a lot to pack in and one event just wasn't going to do it. Last year we re-introduced engineer led technical topics, had a distillery tour, recommissioned our chapter charter, and more. To cap it all off, we held our first ever Crab Feast! I was very happy that everyone was able to come out and enjoy the park and dig in to fresh steamed crabs, music, and outdoor dining with friends. We recognized and renewed our commitment to working with the DC chapter and recognized the talents of Niki Patel, as she steps forward from Baltimore AYP Liaison into her new role as Society AYP Liaison!

While it's almost too much to list here (and I do love me a good list), our celebration was just the beginning! We're continuing the hard work that our board members have put forth and with the help of the DC and Philly chapters, we've put a great slate of technical topics for this season. The intent for the topics this season is to introduce our members and soon to be members to topics they deal with every day, but may not be immediately thinking about. To kick it all off, we're reintroducing Professional Ethics topic. If your first thought was, "This has nothing to do with me", well that's even more reason to attend! Making sure that the client gets what they pay for and making sure that your company doesn't over extend themselves is everyone's business. Later this season, we're bringing not one, not two, but three peer engineer lead technical topics, including one by yours truly. I'll be discussing Hot Water Recirculation systems, and back by popular demand, Joe Niedzielski will continue his discussion on Contract Management. Other sessions will include, our famous union event, a communication skills topic on how to bridge generation gaps, our favorite UMD Professor Ken Isman, and a Panel discussion featuring a code reviewer, contractor, and senior engineer to discuss how each approaches problems with a design and the tools they have to resolve them. I was right, I really do love lists!

Those eagle eyed members may also have noticed a different pricing structure for our chapter events. We believe that we have come to a compromise in bringing you the value of a good dinner and technical topic with the rising costs of putting on a great show. We did raise our ticket prices, but are also offsetting that price with early bird discounts! Those discounts are available right up until the week of the meeting, so for most of us, there's not much change. The discount expires on the Friday before and regular prices are in effect until the day before the meeting. Our venues need time to prepare all of the great food and while we respect your time commitments, it is hard for us to accommodate last minute additions. We thank you for your consideration and I welcome your feedback. After all, this is your chapter!

Viega, LLC - Mike McCarthy:

Technical Manager (571) 328-1143

mike.mccarthy@viega.us

Viega Questions? Lunch & Learn sessions, project support & specification review.

The background of the advertisement features a blue-toned, futuristic cityscape at night. The buildings are illuminated with various lights, and there are digital data streams and grid patterns overlaid on the scene, creating a high-tech, industrial atmosphere. In the foreground, a large, detailed image of a NIBCO 585HP ball valve is shown, highlighting its brass body and white handle.

ALWAYS ON THE JOB

THE 585HP BALL VALVE TAKES THE PRESSURE



NIBCO **585HP**

GREGORY AMICUCCI
Commercial Sales Manager - Northeast
P: 631.304.4955 | amicuccig@nibco.com



SHAFER, TROXELL & HOWE Inc.

Your Solutions Partner Since 1973



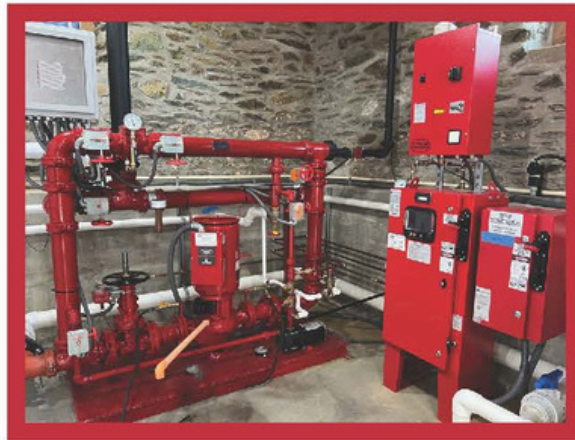
Representing:

Grundfos • Peerless •

PACO • Myers • SyncroFlo •

Cougar Controls • Topp Industries •

Primex Controls • See Water



Sales and Service Specialization:

Sump/Sewage Pump Stations • Water Booster Systems •

Fire Pump System • Rainwater Harvesting Systems •

Circulating Pumps • Water Filtration Systems



Contact our Engineering Team

800-233-7718 | engineering@sthinc.com

97 - D Monocacy Blvd. • Frederick, MD 21701 • www.sthinc.com



Julian Chiveral, LEED AP BD+C
Vice President- Technical

Technical Report

When Billie Joe Armstrong first wrote the iconic lyric “wake me up when September ends,” it originally included a little known exception: “but don’t let me sleep through the Baltimore ASPE meeting.” It may not have made it into the final cut... but it’s an important lesson nonetheless.

This season, we will be back at Little Havana for our meetings – at least to start things off. I am always open to suggestions for alternate venues in and around Baltimore that could support our monthly meetings.

For September, we’ve found a speaker/topic combo that is sure to be a hit – especially for our MD licensed engineers. We’re discussing ethics! More specifically, we’ll cover dispute resolution for engineers and the corresponding ethical obligations. The structures and roles will be integrated with the requirements of the Code of Ethics for Engineers of the National Society of Professional Engineers. Specific applicable case from the Board of Ethical Review will demonstrate the ethical tensions and implications.

Our presenter is Rebecca A. Bowman, Esq., P.E., D.F.E. (NAFE #1153). Bowman recently completed a four-year term as the Senior Director of Ethics and Professional Practice with the National Society of Professional Engineers. She is a registered professional engineer, a certified arbitrator and mediator, and a Diplomate of Forensic Engineering. She received her B.S. degree in civil engineering from the University of North Dakota, her M.B.A. degree from Oklahoma University, her J.D. degree from Duquesne University, and her post-graduate certificate in Sustainability Policy from Penn State. She just celebrated her 50th year in heavy construction and is a recovering HVAC engineer.

I don’t know about you, but I can’t wait for the deep dive into ethics. I’ll see you folks on September 17th at Little Havana. As always, registration is available on the Baltimore ASPE website.



Ethics and Engineering

Consider and evaluate your current projects to bring focus to the ethical boundaries and good practices employed each day.

October 7, 2019 - Victoria B. Valentine, P.E.

Engineers and specifically those who work with fire protection regularly work to achieve public health, safety and welfare in their projects. This is the engineer's obligation of professional conduct to help create and sustain the natural and built environments in a way that does not put undue risk and danger on the public. A key component in achieving this is ethics.

Merriam-Webster.com defines ethics as, "the principles of conduct governing an individual or a group." What principles of conduct govern your professional career? There are many organizations engineering professionals choose to affiliate with, such as the American Society of Plumbing Engineers (ASPE), the National Society of Professional Engineers (NSPE) or the Society of Fire Protection Engineers (SFPE), to name a few. These professional engineering organizations, and many others, each have a code of ethics for members to abide by.

A code of ethics is often comprised of the fundamental reminders about honesty, impartiality, competence, knowledge and skills. If you have not reviewed an ethics code, it might be a good time to find those for the organizations you hold a membership. The professional conduct of engineers is, in general terms, expected to be one where knowledge is used to the best of one's ability to do good works meeting the task goals and maintaining fair and safe conditions.

Ethics are not an everyday conversation for most engineers. So, how often do ethics arise in engineering work? They are a fundamental part of engineering work even if not discussed directly. For many, it starts with the simple philosophy that an engineer does not practice outside his or her area of expertise. This is highlighted in most licenses for those who are professional engineers (PEs).

However, while most jurisdictions regulate that professional engineers handle specific tasks, they do not regulate the disciplines of the engineers who actually complete the work. This is covered by engineers needing to understand and recognize where their expertise ends and another professional is required.

Expertise areas, conflicts of interest

Fire protection engineers come from many different disciplines and backgrounds. With the variety of areas to work in for a career, it is vital to abide by standards of ethics and only practice in subject matter that you hold expertise. For some fire protection engineers, this may be fire protection systems design or fire risk analysis or wildland-urban interfaces.

Although a fundamental competency is expected of a fire protection engineer (see "Minimum Competency for Fire Protection Engineers," Plumbing Engineer, July 2018) across many subjects within a discipline, a more in-depth knowledge develops, forming an expertise in only some of the areas. Similarly, other engineering disciplines can demonstrate a variety of expertise areas.

Ethics have grown in importance with licensing boards, such that now many states require PEs to have a specific number of continuing education units each renewal cycle. Typically, the requirement is for an hour or two focusing on ethics every two or three years for those boards that have implemented this. Most of the professional societies offer courses to help members and nonmembers meet this requirement; many local chapters bring in speakers to help attendees gain these credits, too. Check with your state boards for their specific requirements pertinent to license renewals.

Ethics and Engineering

Another area where ethics are essential to an engineer's career is identifying conflicts of interest. Some may be obvious; others may be more subtle. A conflict of interest occurs where the concerns and goals of one project/client where an engineer is working are incompatible with another project/client. In application, this means that cumulatively, projects need to be evaluated on an overview to consider any possible conflicts of interest and the best course of action.

NSPE has many resources for its members in the ethics category. Regulations are essential for the environment we live in, but without the strong ethics of the engineering community, things could still go awry. Tools frequently asked questions (FAQs), Board of Ethical Review Cases, and a Licensure and Ethics Hotline. Studying past cases and situations that arose for others may enlighten us to areas of concern needing more attention in our work.

Cases where ethics come into question can involve gray areas where interpretation and consideration of all the scenario details are crucial. This topic can impact everyone. Articles, newsletters and other resources are abundant if you look for them. The question is: Are you looking? Have you taken the time recently to recall how important your professional ethics are to your work, as well as those around you? Maybe it is time to share with your colleagues, too, or mentorees.

Take a look at NSPE's Engineers' Creed. It can offer a quick refresh on a topic that is not only core to sound engineering, but can help to remind us of the service engineering is to the world around us – whether you're a member, nonmember or work in and around engineering.

NSPE's Engineers' Creed

As a Professional Engineer, I dedicate my professional knowledge and skill to the advancement and betterment of human welfare.

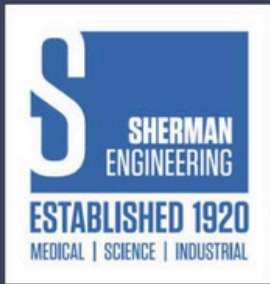
I pledge:

- To give the utmost of performance;
- To participate in none but honest enterprise;
- To live and work according to the laws of man and the highest standards of professional conduct;
- To place service before profit, the honor and standing of the profession before personal advantage, and the public welfare above all other considerations.

In humility and with need for Divine Guidance, I make this pledge. Adopted by the National Society of Professional Engineers, June 1954.

Ethics is often a field of gray, when we would like engineering to fit, similar to many calculations, into black-and-white rules. Taking the time to consider current projects and evaluate the ethics surrounding them can bring focus to the ethical boundaries and good practices employed every day.

Acting ethically is a responsibility that all engineers must carry. Protecting public health, safety and welfare is no easy task, but it is a challenge I know the engineering community can conquer.



ARE YOU RESPONSIBLE FOR DESIGNING COMPRESSED GAS AND VACUUM SYSTEMS?



SINCE 1920, SHERMAN ENGINEERING

has been offering the optimum engineered vacuum and compressed gas systems in the Healthcare, Pharmaceutical, Chemical, Power, and General Industrial markets.

OFFERING 24/7 EMERGENCY SERVICE

our factory trained and ASSE 6000 credentialed service technicians are available to manage preventative maintenance and emergency outages.

QUESTIONS? CONTACT:

Jordan Myers

1830 County Line Rd, Unit 303
Huntingdon Valley, PA 19006
jtmyers@shermanengineering.com
267-222-2710

01

Vacuum Pumps

Liquid Ring, Rotary Vane, Rotary Claw, Rotary Screw, etc.

02

Compressors

Rotary Scroll, Rotary Screw, Rotary Tooth, Reciprocating, and more

03

Medical Gases

Medical Vacuum, Medical Air, Compressed Gas Manifolds, and Medical Gas Pipeline Equipment

04

Field Services

Medical Gas Verification, 24/7 Field Service Technicians, Installation Assistance, ASSE 6000 Training

05

Engineering Services

Custom solutions for compressed gases and vacuum. Medical gas design sizing and pipe layout

Scan the QR Code to visit our website



PROUD TO SUPPORT ASPE BALTIMORE



For nearly 60 years, Mueller Associates has delivered plumbing engineering designs that strengthens communities through health, sustainability, and innovation.



Mueller

Mueller Associates
1306 Concourse Drive, Suite 100
Linthicum, MD 21090
www.muellerassoc.com
410.646.4500

ENGINEERING GREAT EXPERIENCES



Nicole Murphy
Vice President- Membership

Membership Report

Hello Baltimore Chapter!

Welcome to the 2025–2026 ASPE Kickoff Newsletter!

We're excited for a new year ahead—full of opportunities, connections, and hopefully plenty of growth!

We're thrilled to welcome our newest members who joined over the summer:

- Donnie Stewart Black
- Patrick Fulford
- Stephen Wagner
- Timothy Cassady
- Nicholas D. Bowleu
-

With 137 members and counting, our chapter continues to thrive. ASPE membership provides unmatched opportunities for professional development, industry networking, and access to valuable resources—including our always-engaging monthly meetings.

👉 Not yet a member? Now's the perfect time to join!

Already a member? Help us grow by inviting colleagues and peers to attend an event or explore membership.

[🔗 Learn more or join here](#)

Upcoming Events

- September 17th – First Chapter Meeting at Little Havana
- September 19th – AYP Event: Baltimore Pirate Cruise

Let's keep building our community and growing together this year—we can't wait to see you at our upcoming events!



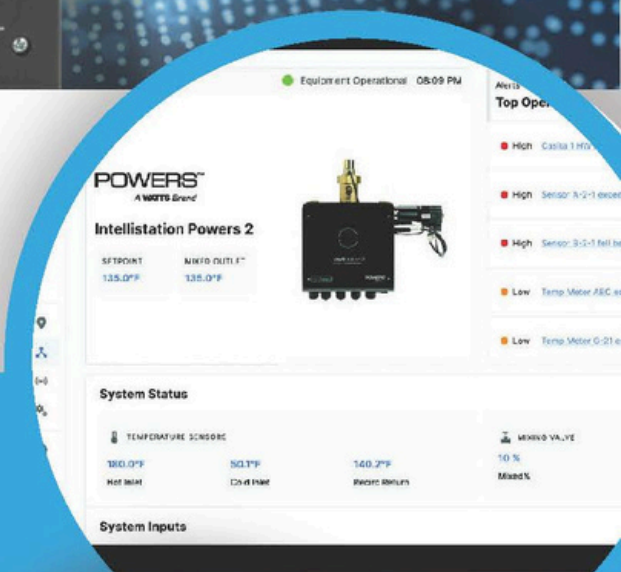
THE NEXT GENERATION OF DIGITAL MIXING

Temper Water. Not Expectations.

Key Features:

- Improved temperature control with Globe Valve Design
- Sensor package options to fit any application
- Improved touchscreen with screen swipes
- Full temperature monitoring and pressure/flow rate monitoring options

IntelliStation 2 performance data can be viewed from anywhere and tracked over time for trends that can help optimize your system and anticipate issues. This next generation mixing valve can be monitored and controlled remotely via **Nexa** or your BMS, and doesn't require factory preprogramming, a laptop, or special software when commissioning or making or adjustments.



works with **nexa**



nexaplatform.com

POWERS™
A WATTS Brand



The **JOYCE**
AGENCY



703-866-3111 | www.thejoyceagency.com



E.J. Dwyer Company

10910 Pump House RD
Annapolis Junction, MD 20701

+ years of professional service!

Proudly representing quality BAA compliant products:

AGS

americangassafety.com

Laboratory, Kitchen, CO2, Gas detector UL approved valves & enclosures. Emergency off button w/valve. Complete utility control for water. Merlin digital controller. **In Stock!**

Aquarius Showers

aquariusproducts.com

Residential & commercial. Acrylic & gel-coat ADA compliant showers. Barrier free shower pans + tube replacement pans. **In Stock!**

Bradley Corporation

bradleycorp.com

Washfountains, lavatory centers, Halo emergency fixtures, repair parts. Natural quartz Evero, Verge, Advocate, Omni Deck, Washbar. Washrooms accessories. **In Stock!**

Chicago Faucet Company

chicagofaucets.com

Quality faucets for commercial applications, now offering sensor faucets. Meet the no-lead laws with our E-cast products. Food service for your entire kitchen, restaurant needs. Full lines of back mount, deck mount styles with pre-rinse, glass & pot fillers, faucets built to last! **In Stock!**

Chronomite Heaters

chronomite.com

Electric instantaneous hot water heaters from 0.2gpm to high capacity. Instant-micro & insta-temp digital mixers for multiple applications. Including **Omni** laminar flow controls. **In Stock!**

Circuit Solver

circuitsolver.com

Thermostatic balancing valve, automatically & continuously maintains recirc temperature. Manufactured by **ThermOmegaTech**, inline valve eliminates time consuming balancing procedures.

Comfort Designs

comfortdesignsbathware.com

ADA compliant, tile finish & tub replacement fixtures. Shower pans, ADA units, multi-piece with solid surface finish. Asura trench drain. New integral trench drain w/zero threshold shower systems. **In Stock!**

Filtrine Drinking Fountains

Filtrine.com

Drinking water products with a tradition of superior quality craftsmanship. Bottle filling stations, chillers, UV purifiers. Taste master carbon filters with stainless steel housing.

Keltech Tankless Heaters

keltech-inc.com

Commercial, industrial, & emergency applications. Precisely engineered, for quality tankless performance to suite your needs. 5kW to 144kW, ASME.

ThermOmegaTech

thermomegatech.com

Drain tempering valve - DTV - to add cold water to drain lines for codes. The STV - steam wash down station high temp mixing w/hose & wash down gun. Scald guard & freeze protection valves for emergency fixtures.



Contact Us:

www.ejdwyer.com

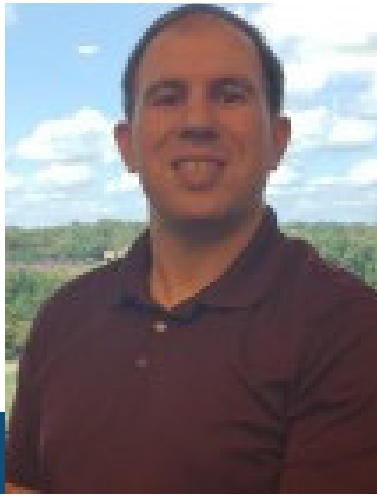
Phone: 240-553-0112

Fax: 888-811-4830

customerservice@ejdwyer.com

Kathy Dwyer - kdwyer@ejdwyer.com - 443-250-0285





Chris Imhof, PE, CPD
Vice President- Legislative

Legislative Report

ASPE Signs Renewed MoU with IAPMO, ASSE International, and ARCSA International

ASPE and IAPMO have renewed a memorandum of understanding (MoU), now incorporating ASSE International and ARCSA International, to jointly advance and promote the mutual interests of education, regulations, design, specifications, installation, and inspection of plumbing systems, as well as training, testing, and certifying qualified professionals to perform design work responsive to the need to conserve and protect water supplies and reduce energy use connected to the delivery and use of water.

For more details, please visit,

<https://aspe.org/blog/aspe-signs-renewed-mou-with-iapmo-asse-international-and-arcsa-international/>

CPSC Warns Consumers to Immediately Stop Using Certain Chinese-Made Faucets Sold on Amazon.com Due to Dangerous Lead Exposure for Infants, Young Children and Pregnant Women

The U.S. Consumer Product Safety Commission (CPSC) is warning consumers to stop using certain bathroom and kitchen faucets sold on Amazon.com that can leach lead into drinking water. Lead ingestion can cause harmful neurological effects on infants, young children, and pregnant women, including attention-related behavioral problems, decreased cognitive performance and lower IQ. CPSC advises to stop using and dispose of these faucets immediately.

These warnings follow a CPSC enforcement sweep targeting dangerous faucets manufactured in China. CPSC issued a public health and safety finding to expedite public warnings about these faucets because individuals may be in danger from these product hazards.

For more info, please visit,

<https://www.cpsc.gov/Warnings/2025/CPSC-Warns-Consumers-to-Immediately-Stop-Using-Certain-Chinese-Made-Faucets-Sold-on-Amazon-com-Due-to-Dangerous-Lead-Exposure-for-Infants-Young-Children-and-Pregnant-Women>

Colorado launches new building code designed to encourage efficient, all-electric homes

On September 2, the Colorado Energy Office published its Model Low Energy and Carbon Code today, which will become the state's new minimum building code on July 1, 2026. The new building code is a modified version of the 2024 International Energy Conservation Code. The new Code does not prohibit the installation of fossil fuels but encourages the construction of all-electric buildings.

To read more, please see,

<https://www.cpr.org/2025/09/02/colorado-new-building-code-energy-efficient-electric-homes/>

California halts building code updates

At the end of June, California Gov. Gavin Newsom (D) signed into law AB 130, a sweeping bill that aims to make it easier to build housing, reforms that many lawmakers and experts agree are long overdue given the state's severe housing crisis.

But one provision could needlessly slow the state's progress on its climate and clean energy goals, according to advocates. The law pauses updates to state and local building codes – the mandatory construction standards meant to ensure that new buildings are safe and energy efficient – for the next six years.

To read more, please see,

<https://www.yahoo.com/news/articles/california-halts-building-code-updates-073000030.html>

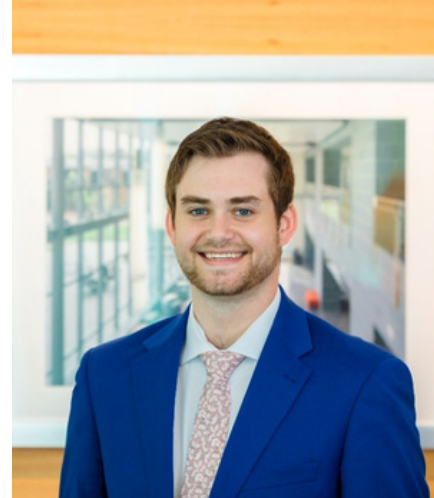
NYC Legionnaires' outbreak linked to two city-run buildings, including Harlem Hospital

A New York City hospital and another city-run building were sources for a deadly outbreak of Legionnaires' disease in Harlem that killed seven people and sickened dozens of others. Several survivors, meanwhile, have already sued over the outbreak. Lawyers representing two workers at the impacted construction site have said they believe untreated rainwater from recent storms in the cooling towers led to the outbreak.

City and state officials in 2015 enacted regulations requiring building cooling towers be regularly registered, tested and inspected following a deadly outbreak in the city.

To read more, please see,

<https://apnews.com/article/legionnaires-disease-new-york-harlem-e509d666283abb9e22492a374c62c9f5>



Justin Saelens, LEED AP BD+C
ASPE Young Professionals Liaison

AYP Report

Hello Everyone!

I hope everyone had a great summer with lots of opportunities for some rest and relaxation! For those of you I have yet the pleasure of meeting in person, I will be serving as the ASPE Young Professionals Liaison for the Baltimore Chapter this season. I have been a mechanical engineer with Mueller Associates since early 2022, and a member of the Baltimore ASPE chapter for the past two seasons.

Still being relatively green in the industry, I have found my participation and membership with ASPE to be extremely valuable. The technical meetings have given me insight into the complexities of plumbing systems and equipment I may have yet to be exposed to, or have only been involved with on a superficial level. For any younger engineers, whether that happens to be you or a colleague, who may be on the fence about attending any ASPE events, I highly encourage coming out and giving it a chance.

As a first step, the first AYP event of the season is quickly approaching and would be a fantastic opportunity to network with some fellow young engineers. The event will be held alongside the Young Engineers of ASHRAE and will be a happy hour on the Urban Pirates Cruise in the Baltimore Harbor. If you are interested in attending, please see the details on the flyer below. I hope to see you there!

The flyer is for an event titled "ALL ABOARD! YEA & AYP PIRATE CRUISE". It features a blue background with a green pirate ship sailing on stylized waves. The ASHRAE logo is in the top left, and the CASPE logo is in the top right. The event details are as follows:

September 19, 2025 5:30-7PM
911 S. Ann Street, Baltimore, MD

Join young engineers from ASHRAE & ASPE for a pirate cruise and happy hour on the harbor! Members are welcome to bring a guest.

Tickets: \$15 for YEA/AYP members, \$25 for guests
Register at ashrae-balto.org

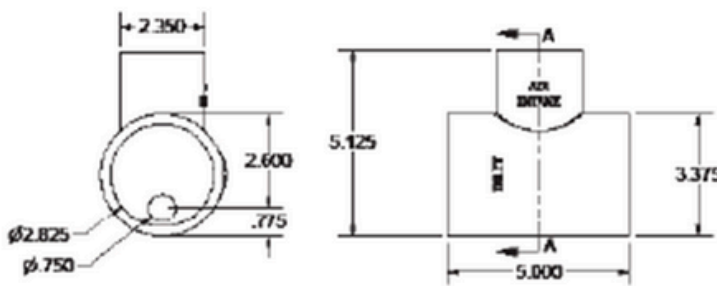
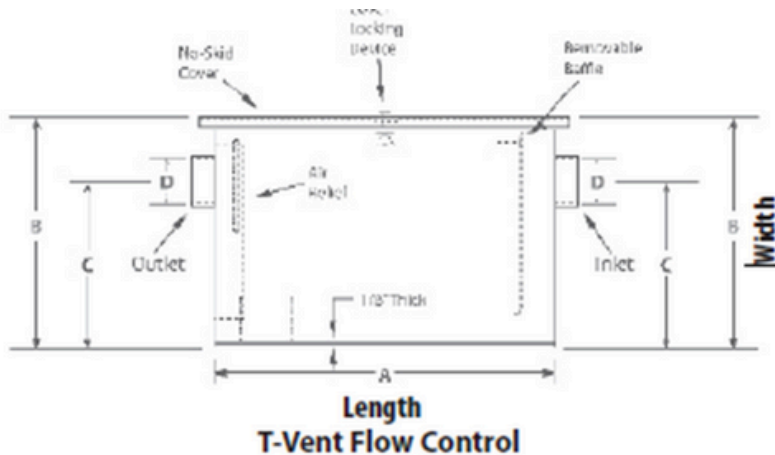
Drinks will be provided by ASHRAE/ASPE, but you may BYOB as well!



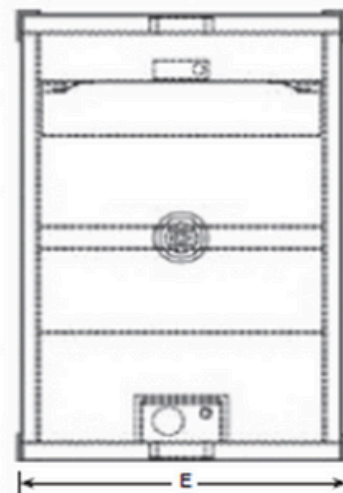
David Bailey
PLUMBING PLANS REVIEWER'S CORNER

Happy New ASPE Year members of the DC and Baltimore ASPE Chapters. In May, I left you with a situation whereby a 3-compartment sink had three 1-1/2 IW discharging into a 3" FS per the Drawing Notes. This is something that I shall not approve. The square root of the sum of the squares of the indirect wastes shall be one pipe size smaller than the drain of the receptor. For a 3-inch receptor drain, the maximum uniform pipe size of three IW is 1 1/4". Also, the Sizing Calculations per the drawing indicated that the IW are 3/4" each whereby there is a discrepancy with the information provided.

This month's issue involves the BK Resources Flow-Based Grease interceptor model BK-GT-40 and the question before you is as follows: Why is this specified grease interceptor not allowed by WSSC Water (see below)?



Install T-Vent between sink and grease trap inlet



Product Specifications:

- Non-Skid Deck Plate
- Constructed of 11 ga. Carbon Steel w/ Corrosion Resistant Coating
- Removable Baffles for Ease of Maintenance
- Main Body of Grease Trap Suspended Above Floor to Avoid Corrosive Environment and Extend Life
- No Hub Connections
- T-Vent Provided
- Designed for removing and isolating F.O.G. (Fat, Oil, Grease) from wastewater wherever food is prepared

Certifications:



Due to our commitment to improving our products, specifications are subject to change without notice.

Product Detail:

Model #	DIM. A	DIM. B	DIM. C	DIM. D	DIM. E	Product Weight (lbs)
BK-GT-8	14 ^{1/8"}	11 ^{1/4"}	7 ^{1/2"}	2"	10 ^{1/2"}	37.00
BK-GT-14	16.1875"	12.125"	8.125"	2"	13.5"	48.00
BK-GT-20	20.125"	12"	8"	2"	14.25"	58.00
BK-GT-30	20.375"	13.75"	10.375"	2"	15.25"	67.00
BK-GT-40	22.5"	14.875"	11.5"	3"	16"	78.00
BK-GT-50	24.375"	16.5"	12"	3"	17.5"	90.00
BK-GT-70	28.5"	19"	14"	3"	18.125"	112.00
BK-GT-100	30.375"	21.5"	16.25"	4"	22.125"	152.00

If you think you know the answer, be prepared to reveal it at this September's Chapter Meeting.

Manufacturers Representative Since 1968

Harry Eklof

& Associates, Inc.

Representing:

CALEFFI
Hydronic Solutions



FIELD CONTROLS



FUJITSU AIRSTAGE



Navien



FLORESTONE
A spec above.



SCAN THE QR-CODE

to get more information
on product and training!





PVI INDUSTRIES: www.pvi.com

ASME Water Heaters for all energy sources. AquaPLEX Duplex stainless steel tank, semi-instantaneous, instantaneous, flexible fuels, condensing boilers, digital mixing valves.



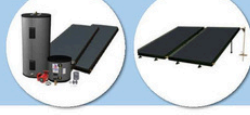
HUBBELL WATER HEATERS: www.hubbellheaters.com

ASME and Non-ASME water heaters. Electric, gas, steam and indirect. Cement lined tanks, hazardous locations, tepid water heating systems, RO/DI, heat pump water heating.



LYNC: www.lyncbywatts.com

Engineered System Solutions; Commercial Heat Pump Water heating, Packaged Water Heating Systems, and Hot Water Wellness Solutions.



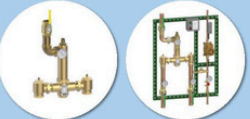
AET ALTERNATE ENERGY TECHNOLOGIES: www.aetsolar.com

Solar Water Heating Systems, complete drainback systems, flat panel solar collectors, engineering support.



AMTROL: www.amtrol.com

ASME and non-ASME Expansion Tanks, Hydropneumatic Tanks, Storage Tanks, and Air Elimination Equipment



LAWLER MANUFACTURING: www.lawlervalve.com

Thermostatic Mixing Valves for Domestic Water; manifold recirculation stations, Emergency Mixing Valves, Combination Temperature and Pressure Valves, Photographic Control Valves, thermostatic and Digital Mixing valves.



STINGRAY SYSTEMS: www.tepid.com

Emergency fixture and mixing valve solutions; eyewash, eye/face, shower only, combination stations, emergency mixing valves.



THERMON MANUFACTURING: www.thermon.com

Freeze Protection for Pipes, Control and Monitoring Systems, Roof and Gutter Deicing, Snow Melting and Floor Warming Cables, Domestic Hot Water Temperature Maintenance.



HEATIZON: www.heatizon.com

Electric Snow Melting Systems, Electric Roof Deicing, Electric Slab Heating, Electric Radiant Floor Heating, Turn Key Electric Snow Melting Systems.



FRIO: www.frio.co

Next generation heat trace controllers using IoT connectivity, innovative sensing, and advanced control methods to provide 24/7 advanced monitoring with automatic fault notification.



REIMERS: www.reimersinc.com

Electric steam boilers, electric hot water boilers, custom engineered skid packages, unvented blow off tanks, vented blowdown separators.



TRICON FORCE PIPING SOLUTIONS: www.tfpiping.com

Pre-Fabricated, Pre-Insulated Piping Systems, Secondary Containment and Conduit Piping Systems for Industrial and Commercial Applications.



Please contact **Jason Eagles** – Jason@bayassociates.com

10943 McCormick Rd, Hunt Valley, MD 21031

PHONE 410-825-6616 | FAX 410-825-6618 | www.bayassociates.com





Bell & Gossett
a xylem brand

NEXT GENERATION PACKAGED BOOSTER SYSTEMS



**TECHNOFORCE™
e-HVX/e-HVXR
PACKAGED
BOOSTER SYSTEM**

**Ultra-premium efficiency.
Simplified components.
Easily serviceable.
Highly compact.**

Introducing the e-HVX/e-HVXR – engineered with the modern mechanical room and modern-day building challenges in mind. Coupled with Xylem’s hydrovar® X smart motor technology, the e-HVXR offers a higher performance with a reduced footprint compared to legacy generation models.

Maximized by X: Space-saving by design

bellgossett.com/poweredbyx

© 2024 Xylem Inc. Bell & Gossett is a trademark of Xylem Inc. or one of its subsidiaries.

CUMMINS-WAGNER

100% Employee Owned

Info-CW@cummins-wagner.com

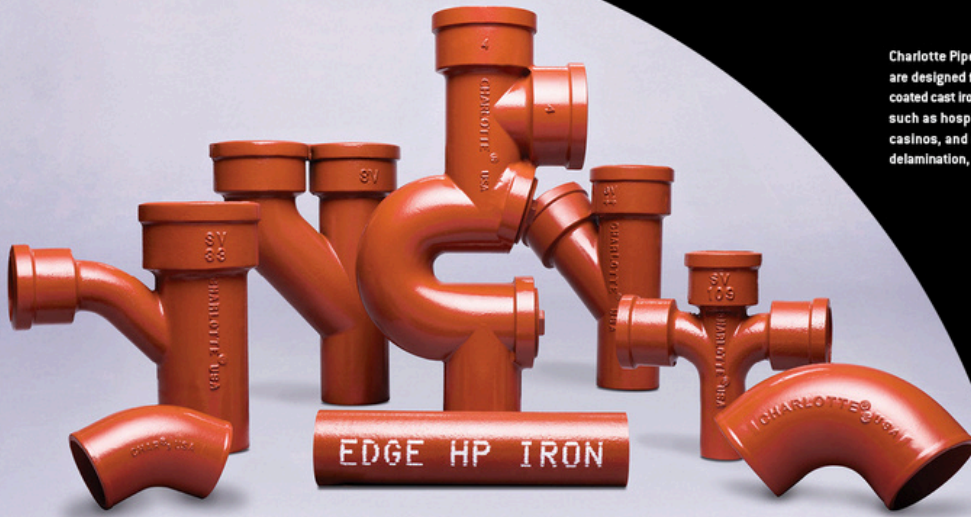
410.792.4230 | cummins-wagner.com

xylem

HIGH PERFORMANCE.
ENHANCED PROTECTION.

THAT'S

EDGE HP IRON™



Charlotte Pipe and Foundry's Edge HP Iron pipe and fittings are designed for aggressive DWV applications. This specially coated cast iron provides enhanced protection for environments such as hospitals, commercial kitchens, soda fountains, casinos, and more. The electrocoating process prevents delamination, delivering cutting-edge performance every time.

CHARLOTTE
PIPE AND FOUNDRY COMPANY

Find out more at CharlottePipe.com/Edge



PIPE & COUPLING



anaco-husky

SOURCED IN AMERICA. MADE IN AMERICA.



Patrick Leonard: (443)401-9695 Dave Jones: (443)834-4410
Patrick@4leafsales.com Dave@4leafsales.com

Countless Solutions All Built to be the Best®



Residential and commercial solutions offering exceptional performance, efficiency, reliability and innovations, including Microban® antimicrobial technology inside all tank-type water heaters.

Learn more




BRADFORD WHITE®
WATER HEATERS
Built to be the Best®

Microban® antimicrobial product protection helps prevent the growth of bacteria, mold and mildew that may affect the product. The built-in antimicrobial properties do not protect users or others from disease-causing organisms. Microban® is a registered trademark of Microban Products Company. ©2025, Bradford White Corporation. All rights reserved.

A Thinner Shield is Better!

TRANSFERENCE OF TORQUE

Thicker gauge shield material blocks the torque from getting to the gasket. A thinner shield protects the gasket while allowing a more efficient transfer of torque therefore providing a better seal.

DEFLECTION

A thinner shield is more forgiving, flexible, and malleable. It bends with the joint allowing the seal to remain strong. A thick shield is rigid and does not form itself over the joint.

STEPPED JOINTS

The thinner shield allows the shield to conform over the stepped joint providing a more effective seal.



Interested in learning more? Contact Glenn Spilling, National Sales Manager
gspilling@idealtridon.com | 615-686-7826

Or visit us online at IdealTridon.com!





Barnard Associates
55 Aileron Court, Suites 1 & 2
Westminster, MD 21157
(P) 410-720-0900, (F) 410-720-0904

Canplas

Plastic Grease Traps, PVC/DWV Fittings and Plumbing Specialties

Centoco Corp

Toilet Seats

Compass Manufacturing

Toilets and Stainless-Steel Sinks

Enfield

Acid Waste Piping, High Purity Piping

Guardian

Double Containment Piping Systems

Hammond Valves

Plumbing and Heating Valves

Ideal Tridon Couplings

No Hub, Heavy Duty and Specialty Couplings

Ipex

Schedule 40 & 80 PVC and CPVC Pipe

Milwaukee Valve

Domestic & Import Metal Ball, Butterfly, Check, Gate, Globe

High Performance Butterfly

NAC-NewAge Casting

Cast Iron and Epoxy Coated Pipe

SAS Safety Corporation

Protective Safety Equipment

Speakman Company

Hospitality Fixtures, Commercial Brass Emergency Equipment

Wolverine Brass

Plumbing Products for the Professional

Contact:

Office Phone: 410-720-0900

Office Fax: 410-720-0904

Come see the most disruptive break through pumping technology the industry has seen in decades!



- Eliminates the wet well;
Maintenance**
- No Odors**
- Reduce excavation/construction costs**

AMES, Inc. is a manufacturer's representative of water and wastewater treatment, pumping, and HVAC equipment. We serve the municipal, commercial, and industrial markets in Delaware, Maryland, Northern Virginia, West Virginia, and District of Columbia.

PRODUCT OFFERINGS:

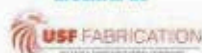
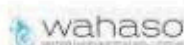
- Overwatch Direct Inline Pumping System
- Pumps
- Controls
- Water & Wastewater
- Packaged Systems
- Rainwater & Water Reuse
- Grease/Interceptor

PARTS & SERVICES

- New Construction Field Service
- Warranty & Repair
- Maintenance Contracts
- Parts & Aftermarket Sales

PARTNERING WITH THE INDUSTRY'S PREMIER BRANDS





8918 Herman Drive | Columbia, MD 21045
www.amesinc.com | info@ames.com



HOW CAN WE HELP?
410.995.8899